

**ZAPOSLENOST U PRAVNIM OSOBAMA PREMA STRUKTURAMA ZAPOSLENIH, MART/OŽUJAK 2024.**  
*EMPLOYMENT IN LEGAL ENTITIES, ACCORDING TO EMPLOYEES STRUCTURE, MARCH 2024*

**1. ZAPOSLENI U PRAVNIM OSOBAMA PREMA STEPENU/STUPNJU STRUČNOG OBRAZOVANJA U FBIH PO DJELATNOSTIMA, MART/OŽUJAK 2024.**  
*EMPLOYED IN LEGAL ENTITIES ACCORDING TO PROFESSIONAL QUALIFICATIONS IN FBIH BY ACTIVITIES, MARCH 2024*

Područja	Ukupno <i>Total</i>	V S S <i>University</i>			VŠ <i>Higher</i>	SSS <i>Seco- ndary</i>	NS <i>Eleme- ntary</i>	VKV <i>Highly- skilled</i>	KV <i>Skilled</i>	PK <i>Semi- skilled</i>	NK <i>Unskilled</i>	Sections
		Svega <i>All</i>	Doktori <i>Doctors</i>	Magistri <i>Masters</i>								
<b>UKUPNO</b>	<b>482.363</b>	<b>121.567</b>	<b>3.819</b>	<b>6.855</b>	<b>15.444</b>	<b>239.451</b>	<b>6.113</b>	<b>4.837</b>	<b>68.853</b>	<b>5.033</b>	<b>21.065</b>	<b>TOTAL</b>
A Poljoprivreda, šumarstvo i ribolov	6.869	1.045	3	60	113	3.030	276	27	1.167	340	871	<i>Agriculture, forestry and fishing</i>
B Vađenje ruda i kamena	10.543	1.122	8	30	47	2.855	175	321	3.808	495	1.720	<i>Mining and quarrying</i>
C Prerađivačka industrija	94.501	8.262	9	399	845	48.276	1.438	1.376	25.764	2.653	5.887	<i>Manufacturing</i>
D Proizvodnja i snabdijevanje električnom energijom, plinom, parom i klimatizacija	8.441	2.572	6	93	316	3.025	15	887	1.380	93	153	<i>Electricity, gas, steam and air conditioning supply</i>
E Snabdijevanje vodom; uklanjanje otpadnih voda, upravljanje otpadom te djelatnosti sanacije okoliša	8.566	1.156	2	30	173	2.857	161	131	1.683	336	2.069	<i>Water supply, sewerage, waste management and remediation activities</i>
F Građevinarstvo	21.542	2.824	3	200	299	10.120	428	173	5.545	318	1.835	<i>Construction</i>
G Trgovina na veliko i na malo; popravak motornih vozila i motocikala	87.339	9.826	43	1.070	1.276	58.544	516	197	15.773	96	1.111	<i>Wholesale and retail trade; repair of motor vehicles and motorcycles</i>
H Prijevoz i skladištenje	22.055	2.101	2	91	471	13.132	135	331	5.250	228	407	<i>Transportation and storage</i>
I Djelatnosti pružanja smještaja te pripreme i usluživanja hrane (hotelijerstvo i ugostiteljstvo)	13.205	587	1	35	83	10.241	207	33	1.658	14	382	<i>Accommodation and food service activities</i>
J Informacije i komunikacije	19.664	8.444	16	542	726	9.897	64	198	271	2	62	<i>Information and communication</i>
K Finansijske djelatnosti i djelatnosti osiguranja	11.947	6.178	12	275	628	5.083	22	3	21	2	10	<i>Financial and insurance activities</i>
L Poslovanje nekretninama	2.381	746	8	34	65	1.246	40	7	139	6	132	<i>Real estate activities</i>
M Stručne, naučne i tehničke djelatnosti	15.610	8.791	122	926	532	5.900	68	16	208	7	88	<i>Professional, scientific and technical</i>
N Administrativne i pomoćne usluzne	13.734	1.791	11	94	132	10.902	126	6	346	47	384	<i>Administrative and support service activities</i>
O Javna uprava i odbrana; obavezno socijalno osiguranje	47.703	19.534	72	467	2.020	21.334	439	237	3.573	32	534	<i>Public administration and defence; compulsory social security</i>
P Obrazovanje	46.938	30.110	3.079	1.882	6.098	5.766	1.212	442	659	52	2.599	<i>Education</i>
Q Djelatnosti zdravstvene i socijalne zaštite	35.792	12.515	373	390	1.368	16.788	656	428	1.260	283	2.494	<i>Human health and social work activities</i>
R Umjetnost, zabava i rekreacija	9.470	1.394	5	72	94	7.414	90	19	247	20	192	<i>Arts, entertainment and recreation</i>
S Ostale uslužne djelatnosti	6.063	2.569	44	165	158	3.041	45	5	101	9	135	<i>Other service activities</i>

**2. ZAPOSLENE ŽENE U PRAVNIM OSOBAMA PREMA STEPENU/STUPNJU STRUČNOG OBRAZOVANJA U FBiH PO DJELATNOSTIMA, MART/OŽUJAK 2024.**  
**EMPLOYED WOMEN IN LEGAL ENTITIES ACCORDING TO PROFESSIONAL QUALIFICATIONS IN FBiH BY ACTIVITIES, MARCH 2024**

Područja	Ukupno Total	V S S			VŠ Higher	SSS Seco- ndary	NS Eleme- ntary	VKV Highly- skilled	KV Skilled	PK Semi- skilled	NK Unskilled	Sections
		Svega All	Doktori Doctors	Magistri Masters								
<b>UKUPNO</b>	<b>215.618</b>	<b>70.352</b>	<b>1.791</b>	<b>4.263</b>	<b>9.185</b>	<b>99.668</b>	<b>3.479</b>	<b>348</b>	<b>20.629</b>	<b>1.818</b>	<b>10.139</b>	<b>TOTAL</b>
A Poljoprivreda, šumarstvo i ribolov	1.409	337	1	19	51	648	52	2	87	9	223	Agriculture, forestry and fishing
B Vađenje ruda i kamena	877	351	-	12	20	389	6	9	43	5	54	Mining and quarrying
C Prerađivačka industrija	33.522	3.694	2	220	335	16.021	604	34	8.330	1.415	3.089	Manufacturing
D Proizvodnja i snabdijevanje električnom energijom, plinom, parom i klimatizacija	1.895	986	2	41	100	713	10	3	42	17	24	Electricity, gas, steam and air conditioning supply
E Snabdijevanje vodom; uklanjanje otpadnih voda, upravljanje otpadom te djelatnosti sanacije okoliša	1.280	520	-	5	63	498	12	2	53	8	124	Water supply, sewerage, waste management and remediation activities
F Građevinarstvo	2.410	963	-	71	107	1.061	37	-	99	5	138	Construction
G Trgovina na veliko i na malo; popravak motornih vozila i motocikala	45.505	5.429	25	796	594	29.255	230	38	9.426	22	511	Wholesale and retail trade; repair of motor vehicles and motorcycles
H Prijevoz i skladištenje	4.206	1.052	1	57	211	2.509	55	4	240	9	126	Transportation and storage
I Djelatnosti pružanja smještaja te pripreme i usluživanja hrane(hotelijerstvo i ugostiteljstvo)	7.365	329	-	17	53	5.530	173	12	952	12	304	Accommodation and food service activities
J Informacije i komunikacije	7.812	3.896	6	305	275	3.521	49	12	24	2	33	Information and communication
K Finansijske djelatnosti i djelatnosti osiguranja	7.840	3.964	5	182	447	3.390	19	2	11	-	7	Financial and insurance activities
L Poslovanje nekretninama	879	326	1	15	26	425	16	-	15	-	71	Real estate activities
M Stručne, naučne i tehničke djelatnosti	7.673	4.702	55	531	269	2.606	25	2	28	-	41	Professional, scientific and technical
N Administrativne i pomoćne uslužne djelatnosti	5.572	979	3	53	81	4.104	87	1	50	9	261	Administrative and support service activities
O Javna uprava i odbrana; obavezno socijalno osiguranje	19.243	10.053	27	282	951	6.932	378	26	407	24	472	Public administration and defence; compulsory social security
P Obrazovanje	34.075	22.353	1.476	1.238	4.460	3.495	1.051	167	251	42	2.256	Education
Q Djelatnosti zdravstvene i socijalne zaštite	25.221	8.460	181	278	1.026	12.201	598	30	445	229	2.232	Human health and social work activities
R Umjetnost, zabava i rekreacija	6.028	706	-	36	39	5.017	42	3	95	5	121	Arts, entertainment and recreation
S Ostale uslužne djelatnosti	2.806	1.252	6	105	77	1.353	35	1	31	5	52	Other service activities

### 3. ZAPOSLENI U PRAVNIM OSOBAMA PREMA STAROSNIM GRUPAMA U FBiH PO DJELATNOSTIMA, MART/OŽUJAK 2024.

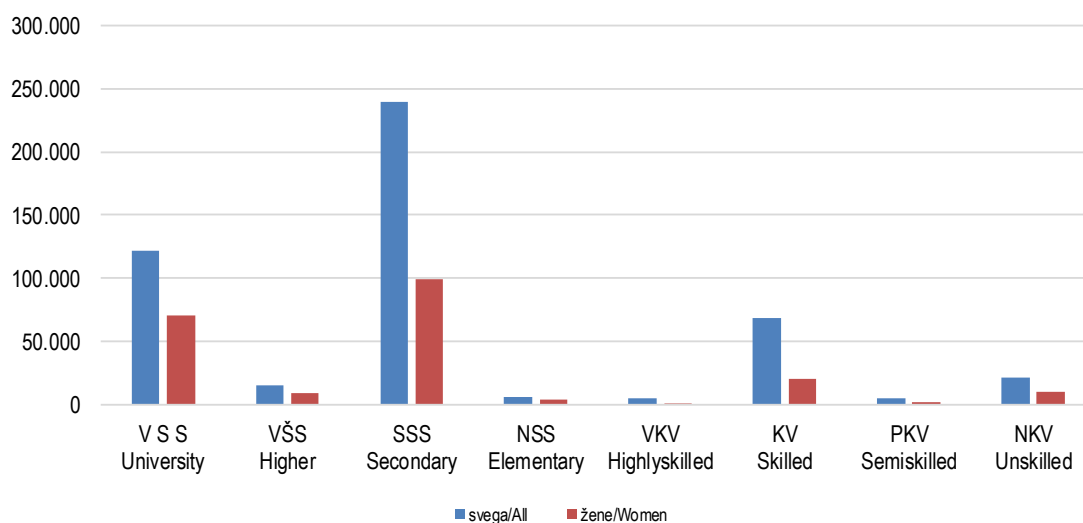
EMPLOYED IN LEGAL ENTITIES ACCORDING TO AGE GROUPS IN FBiH BY ACTIVITIES, MARCH 2024

Područja	Ukupno Total	do/to 18	19-24	25-29	30-34	35-39	40-44	45-49	50-54	55-59	60-64	65 +	Sections
<b>UKUPNO</b>	<b>482.363</b>	<b>70</b>	<b>27.443</b>	<b>55.296</b>	<b>53.682</b>	<b>66.211</b>	<b>71.215</b>	<b>65.550</b>	<b>54.320</b>	<b>47.325</b>	<b>34.676</b>	<b>6.575</b>	<b>TOTAL</b>
A Poljoprivreda, šumarstvo i ribolov	6.869	1	190	429	596	839	951	1.054	994	1.039	686	90	Agriculture, forestry and fishing
B Vađenje ruda i kamena	10.543	-	212	497	767	1.252	1.515	1.694	1.728	1.861	931	86	Mining and quarrying
C Prerađivačka industrija	94.501	17	8.577	12.062	11.325	13.157	14.057	12.335	9.340	8.234	4.638	759	Manufacturing
D Proizvodnja i snabdijevanje električnom energijom, plinom, parom i klimatizacija	8.441	-	113	445	680	1.035	1.230	1.141	1.058	1.434	1.193	112	Electricity, gas, steam and air conditioning supply
E Snabdijevanje vodom; uklanjanje otpadnih voda, upravljanje otpadom te djelatnosti sanacije okoliša	8.566	-	194	436	621	958	1.194	1.338	1.305	1.394	1.010	116	Water supply, sewerage, waste management and remediation activities
F Građevinarstvo	21.542	9	1.301	2.264	2.176	2.716	3.042	2.891	2.411	2.469	1.726	537	Construction
G Trgovina na veliko i na malo; popravak motornih vozila i motocikala	87.339	4	7.049	11.341	10.738	13.306	13.658	11.816	8.511	6.453	3.612	851	Wholesale and retail trade; repair of motor vehicles and motorcycles
H Prijevoz i skladištenje	22.055	2	1.077	2.376	2.218	2.746	3.024	3.131	2.635	2.601	1.893	352	Transportation and storage
I Djelatnosti pružanja smještaja te pripreme i usluživanja hrane(hotelijerstvo i ugostiteljstvo)	13.205	12	1.945	2.041	1.489	1.583	1.706	1.627	1.190	983	550	79	Accommodation and food service activities
J Informacije i komunikacije	19.664	-	1.120	4.300	3.192	2.906	2.417	1.948	1.438	1.328	893	122	Information and communication
K Finansijske djelatnosti i djelatnosti osiguranja	11.947	-	340	1.426	1.421	1.807	2.092	1.814	1.276	902	761	108	Financial and insurance activities
L Poslovanje nekretninama	2.381	-	63	201	231	301	319	325	297	280	255	109	Real estate activities
M Stručne, naučne i tehničke djelatnosti	15.610	-	585	2.830	2.445	2.502	2.161	1.607	1.045	1.021	923	491	Professional, scientific and technical activities
N Administrativne i pomoćne uslužne djelatnosti	13.734	-	1.118	2.243	1.974	2.241	2.036	1.521	1.074	890	529	108	Administrative and support service activities
O Javna uprava i odbrana; obavezno socijalno osiguranje	47.703	-	1.114	3.447	4.167	5.817	5.896	7.012	8.197	5.888	5.329	836	Public administration and defence; compulsory social security
P Obrazovanje	46.938	-	367	3.348	4.037	6.144	8.354	7.426	6.544	5.180	4.690	848	Education
Q Djelatnosti zdravstvene i socijalne zaštite	35.792	-	1.090	3.566	3.570	4.432	5.167	4.964	3.878	4.171	4.159	795	Human health and social work activities
R Umjetnost, zabava i rekreacija	9.470	24	728	1.393	1.351	1.584	1.413	1.070	751	608	461	87	Arts, entertainment and recreation
S Ostale uslužne djelatnosti	6.063	1	260	651	684	885	983	836	648	589	437	89	Other service activities

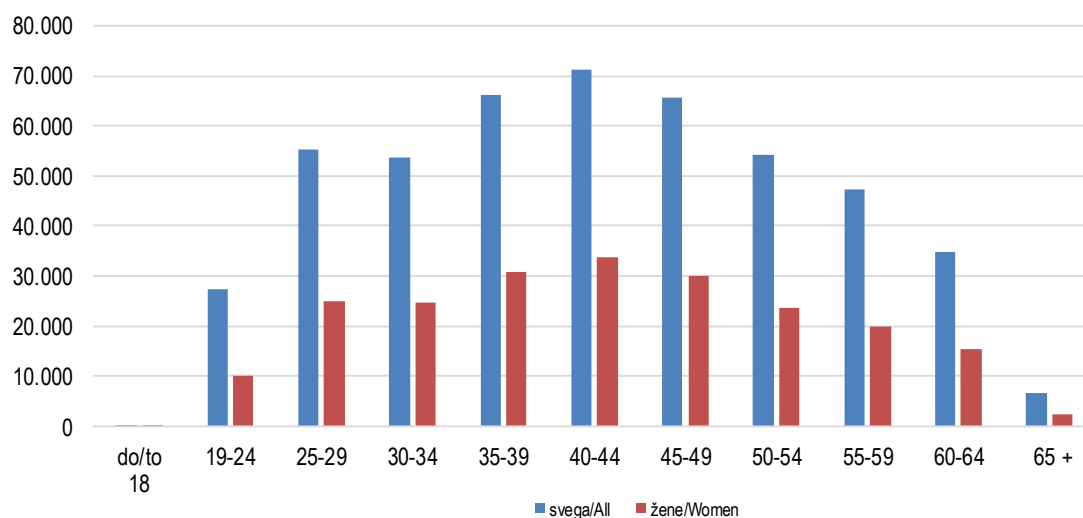
**4. ZAPOSLENE ŽENE U PRAVNIM OSOBAMA PREMA STAROSNIM GRUPAMA U FBiH PO DJELATNOSTIMA, MART/OŽUJAK 2024.**  
**EMPLOYED WOMEN IN LEGAL ENTITIES ACCORDING TO AGE GROUPS IN FBiH BY ACTIVITIES, MARCH 2024**

Područja	Ukupno Total	do/to 18	19-24	25-29	30-34	35-39	40-44	45-49	50-54	55-59	60-64	65 +	Sections
<b>UKUPNO</b>	<b>215.618</b>	<b>19</b>	<b>9.986</b>	<b>25.045</b>	<b>24.574</b>	<b>30.923</b>	<b>33.844</b>	<b>29.947</b>	<b>23.524</b>	<b>20.033</b>	<b>15.423</b>	<b>2.300</b>	<b>TOTAL</b>
A Poljoprivreda, šumarstvo i ribolov	1.409	-	36	113	129	224	194	194	153	208	136	22	Agriculture, forestry and fishing
B Vađenje ruda i kamena	877	-	12	59	83	111	94	97	102	164	138	17	Mining and quarrying
C Prerađivačka industrija	33.522	5	2.335	4.084	3.812	4.792	5.461	4.906	3.820	2.846	1.306	155	Manufacturing
D Proizvodnja i snabdijevanje električnom energijom, plinom, parom i klimatizacija	1.895	-	8	98	155	252	281	255	237	312	276	21	Electricity, gas, steam and air conditioning supply
E Snabdijevanje vodom; uklanjanje otpadnih voda, upravljanje otpadom te djelatnosti sanacije okoliša	1.280	-	17	62	119	172	195	184	153	172	175	31	Water supply, sewerage, waste management and remediation activities
F Građevinarstvo	2.410	1	59	327	342	375	335	260	221	261	169	60	Construction
G Trgovina na veliko i na malo; popravak motornih vozila i motocikala	45.505	3	3.359	5.971	5.657	7.225	7.455	6.180	4.512	3.227	1.625	291	Wholesale and retail trade; repair of motor vehicles and motorcycles
H Prijevoz i skladištenje	4.206	-	110	396	436	571	537	563	522	549	466	56	Transportation and storage
I Djelatnosti pružanja smještaja te pripreme i usluživanja hrane(hotelijerstvo i ugostiteljstvo)	7.365	5	874	971	732	811	1.039	1.093	823	654	335	28	Accommodation and food service activities
J Informacije i komunikacije	7.812	-	360	1.737	1.350	1.211	913	739	583	490	383	46	Information and communication
K Finansijske djelatnosti i djelatnosti osiguranja	7.840	-	247	1.017	977	1.202	1.269	1.159	811	586	515	57	Financial and insurance activities
L Poslovanje nekretninama	879	-	23	93	109	120	104	143	94	85	74	34	Real estate activities
M Stručne, naučne i tehničke djelatnosti	7.673	-	274	1.630	1.316	1.196	1.035	702	491	483	393	153	Professional, scientific and technical activities
N Administrativne i pomoćne uslužne djelatnosti	5.572	-	412	974	812	962	851	551	415	327	228	40	Administrative and support service activities
O Javna uprava i odbrana; obavezno socijalno osiguranje	19.243	-	173	1.073	1.551	2.467	2.829	2.764	2.430	2.704	2.848	404	Public administration and defence; compulsory social security
P Obrazovanje	34.075	-	285	2.653	3.195	4.731	6.320	5.492	4.631	3.450	2.948	370	Education
Q Djelatnosti zdravstvene i socijalne zaštite	25.221	-	761	2.435	2.445	2.979	3.595	3.689	2.842	2.998	3.030	447	Human health and social work activities
R Umjetnost, zabava i rekreacija	6.028	4	485	1.010	997	1.096	894	618	398	278	219	29	Arts, entertainment and recreation
S Ostale uslužne djelatnosti	2.806	1	156	342	357	426	443	358	286	239	159	39	Other service activities

**ZAPOSLENI U PRAVNIM OSOBAMA PREMA STEPENU/STUPNJU STRUČNOG OBRAZOVANJA U FBiH PO SPOLU, MART/OŽUJAK 2024.**  
**EMPLOYED IN LEGAL ENTITIES ACCORDING TO PROFESSIONAL QUALIFICATIONS IN FBiH AND SEX, MARCH 2024**



**ZAPOSLENI U PRAVNIM OSOBAMA PREMA STAROSNIM GRUPAMA U FBiH PO SPOLU, MART/OŽUJAK 2024.**  
**EMPLOYED IN LEGAL ENTITIES ACCORDING TO AGE GROUPS IN FBiH AND SEX, MARCH 2024**



**5. ZAPOSLENI U PRAVNIM OSOBAMA PREMA STEPENU/STUPNJU STRUČNOG OBRAZOVANJA PO KANTONIMA, MART/OŽUJAK 2024.**  
**EMPLOYED IN LEGAL ENTITIES ACCORDING TO PROFESSIONAL QUALIFICATIONS BY CANTONS, MARCH 2024**

	Ukupno Total	V S S University			VŠ Higher	SSS Seco- ndary	NS Eleme- ntary	VKV Highly- skilled	KV Skilled	PK Semi- skilled	NK Unskilled
		Svega All	Doktori Doctors	Magistri Masters							
<b>Federacija BiH/Federation of BiH</b>	<b>482.363</b>	<b>121.567</b>	<b>3.819</b>	<b>6.855</b>	<b>15.444</b>	<b>239.451</b>	<b>6.113</b>	<b>4.837</b>	<b>68.853</b>	<b>5.033</b>	<b>21.065</b>
Unsko-sanski kanton/canton	32.458	6.893	206	212	1.353	18.016	760	189	3.230	144	1.873
Kanton/canton Posavski	5.815	1.207	-	50	241	3.624	106	14	372	7	244
Tuzlanski kanton/canton	90.518	20.011	530	588	1.848	42.564	832	978	18.409	1.019	4.857
Zeničko-dobojski kanton/canton	72.426	13.214	231	445	2.798	33.102	925	1.748	14.980	607	5.052
Bosansko-podrinjski kanton/canton	6.198	1.295	45	83	134	2.845	90	61	1.467	25	281
Srednjobosanski kanton/canton	43.040	7.473	132	569	1.822	20.203	688	244	8.794	1.033	2.783
Hercegovačko-neretvanski kanton/canton	50.751	13.935	519	594	2.595	23.722	382	416	6.062	1.504	2.135
Zapadnohercegovački kanton/canton	19.344	4.766	3	226	1.009	11.863	143	83	1.280	2	198
Kanton/Canton Sarajevo	151.636	50.266	2.151	3.972	3.108	77.784	1.803	1.061	13.603	678	3.333
Kanto/canton 10	10.177	2.507	2	116	536	5.728	384	43	656	14	309

**6. ZAPOSLENE ŽENE U PRAVNIM OSOBAMA PREMA STEPENU/STUPNJU STRUČNOG OBRAZOVANJA PO KANTONIMA, MART/OŽUJAK 2024.**  
**EMPLOYED WOMEN IN LEGAL ENTITIES ACCORDING TO PROFESSIONAL QUALIFICATIONS BY CANTONS, MARCH 2024**

	Ukupno Total	V S S University			VŠ Higher	SSS Seco- ndary	NS Eleme- ntary	VKV Highly- skilled	KV Skilled	PK Semi- skilled	NK Unskilled
		Svega All	Doktori Doctors	Magistri Masters							
<b>Federacija BiH/Federation of BiH</b>	<b>215.618</b>	<b>70.352</b>	<b>1.791</b>	<b>4.263</b>	<b>9.185</b>	<b>99.668</b>	<b>3.479</b>	<b>348</b>	<b>20.629</b>	<b>1.818</b>	<b>10.139</b>
Unsko-sanski kanton/canton	14.719	3.990	96	126	864	7.293	358	30	1.329	26	829
Kanton/canton Posavski	2.556	672	-	29	121	1.469	64	-	90	1	139
Tuzlanski kanton/canton	36.947	11.139	238	369	1.127	16.614	317	80	5.154	280	2.236
Zeničko-dobojski kanton/canton	31.235	7.569	81	293	1.891	13.712	549	78	5.135	105	2.196
Bosansko-podrinjski kanton/canton	2.962	740	9	54	60	1.284	66	8	604	12	188
Srednjobosanski kanton/canton	18.757	4.269	26	363	1.105	8.472	384	18	2.668	532	1.309
Hercegovačko-neretvanski kanton/canton	24.475	8.403	297	367	1.579	10.476	224	49	1.778	773	1.193
Zapadnohercegovački kanton/canton	8.193	2.969	2	128	556	4.129	80	6	373	-	80
Kanton/Canton Sarajevo	71.161	29.129	1.042	2.458	1.592	33.820	1.273	77	3.332	88	1.850
Kanto/canton 10	4.613	1.472	-	76	290	2.399	164	2	166	1	119

**7. ZAPOSLENI U PRAVNIM OSOBAMA PREMA STAROSNIM GRUPAMA PO KANTONIMA, MART/OŽUJAK 2024.***EMPLOYED IN LEGAL ENTITIES ACCORDING TO AGE GROUPS BY CANTONS, MARCH 2024*

	Ukupno Total	do/to 18	19-24	25-29	30-34	35-39	40-44	45-49	50-54	55-59	60-64	65 +
<b>Federacija BiH/Federation of BiH</b>	<b>482.363</b>	<b>70</b>	<b>27.443</b>	<b>55.296</b>	<b>53.682</b>	<b>66.211</b>	<b>71.215</b>	<b>65.550</b>	<b>54.320</b>	<b>47.325</b>	<b>34.676</b>	<b>6.575</b>
Unsko-sanski kanton/canton	32.458	3	2.534	3.494	2.918	3.728	4.330	4.614	4.204	3.596	2.565	472
Kanton/canton Posavski	5.815	3	491	668	577	721	743	757	646	621	494	94
Tuzlanski kanton/canton	90.518	14	5.361	9.775	9.981	12.416	13.255	11.900	10.407	9.575	6.796	1.038
Zeničko-dobojski kanton/canton	72.426	9	4.872	8.170	7.974	10.110	10.559	9.889	8.002	7.301	4.775	765
Bosansko-podrinjski kanton/canton	6.198	-	317	737	775	930	1.009	828	580	557	377	88
Srednjobosanski kanton/canton	43.040	10	2.863	4.811	4.729	6.002	6.592	6.017	4.871	3.956	2.702	487
Hercegovačko-neretvanski kanton/canton	50.751	9	2.156	5.701	5.733	6.833	7.417	6.797	5.735	5.118	4.357	895
Zapadnohercegovački kanton/canton	19.344	8	1.179	2.554	2.643	2.799	2.535	2.390	2.029	1.695	1.284	228
Kanton/Canton Sarajevo	151.636	14	7.153	18.417	17.290	21.514	23.388	20.982	16.587	13.709	10.286	2.296
Kanto/canton 10	10.177	-	517	969	1.062	1.158	1.387	1.376	1.259	1.197	1.040	212

**8. ZAPOSLENE ŽENE U PRAVNIM OSOBAMA PREMA STAROSNIM GRUPAMA PO KANTONIMA, MART/OŽUJAK 2024.***EMPLOYED WOMEN IN LEGAL ENTITIES ACCORDING TO AGE GROUPS BY CANTONS, MARCH 2024*

	Ukupno Total	do/to 18	19-24	25-29	30-34	35-39	40-44	45-49	50-54	55-59	60-64	65 +
<b>Federacija BiH/Federation of BiH</b>	<b>215.618</b>	<b>19</b>	<b>9.986</b>	<b>25.045</b>	<b>24.574</b>	<b>30.923</b>	<b>33.844</b>	<b>29.947</b>	<b>23.524</b>	<b>20.033</b>	<b>15.423</b>	<b>2.300</b>
Unsko-sanski kanton/canton	14.719	-	997	1.580	1.317	1.765	2.172	2.199	1.933	1.537	1.067	152
Kanton/canton Posavski	2.556	-	167	286	249	338	352	358	278	266	229	33
Tuzlanski kanton/canton	36.947	3	1.841	4.025	4.315	5.598	6.029	5.022	3.955	3.322	2.535	302
Zeničko-dobojski kanton/canton	31.235	6	1.903	3.728	3.634	4.659	4.775	4.248	3.257	2.785	2.008	232
Bosansko-podrinjski kanton/canton	2.962	-	139	338	368	441	485	401	310	267	190	23
Srednjobosanski kanton/canton	18.757	3	1.078	2.149	2.159	2.735	2.966	2.641	1.976	1.620	1.261	169
Hercegovačko-neretvanski kanton/canton	24.475	2	788	2.751	2.758	3.288	3.607	3.380	2.818	2.523	2.170	390
Zapadnohercegovački kanton/canton	8.193	-	300	1.068	1.074	1.186	1.121	1.125	907	754	590	68
Kanton/Canton Sarajevo	71.161	5	2.583	8.655	8.235	10.374	11.667	9.894	7.487	6.434	4.958	869
Kanto/canton 10	4.613	-	190	465	465	539	670	679	603	525	415	62

**9. ZAPOSLENI U PRAVNIM OSOBAMA PREMA STEPENU/STUPNJU STRUČNOG OBRAZOVANJA PO OPĆINAMA, MART/OŽUJAK 2024.**  
**EMPLOYED IN LEGAL ENTITIES ACCORDING TO PROFESSIONAL QUALIFICATIONS BY MUNICIPALITIES, MARCH 2024**

	Ukupno <i>Total</i>	V S S <i>University</i>			VŠ <i>Higher</i>	SSS <i>Seco-ndary</i>	NS <i>Eleme-ntary</i>	VKV <i>Highly-skilled</i>	KV <i>Skilled</i>	PK <i>Semi-skilled</i>	NK <i>Unskilled</i>
		Svega <i>All</i>	Doktori <i>Doctors</i>	Magistri <i>Masters</i>							
<b>Federacija BiH/Federation of BiH</b>	<b>482.363</b>	<b>121.567</b>	<b>3.819</b>	<b>6.855</b>	<b>15.444</b>	<b>239.451</b>	<b>6.113</b>	<b>4.837</b>	<b>68.853</b>	<b>5.033</b>	<b>21.065</b>
<b>Unsko-sanski kanton</b>	<b>32.458</b>	<b>6.893</b>	<b>206</b>	<b>212</b>	<b>1.353</b>	<b>18.016</b>	<b>760</b>	<b>189</b>	<b>3.230</b>	<b>144</b>	<b>1.873</b>
Bosanska Krupa	3.079	548	2	14	98	1.710	57	22	437	6	201
Bosanski Petrovac	1.188	160	2	-	23	597	10	1	283	6	108
Bužim	1.341	210	-	4	117	745	74	7	108	11	69
Grad Bihać	11.840	3.505	192	100	634	5.540	146	63	1.184	48	720
Grad Cazin	6.033	1.106	2	40	163	3.739	195	44	473	30	283
Ključ	1.103	181	1	12	57	656	23	7	117	10	52
Sanski Most	3.541	532	2	16	104	2.380	35	31	329	21	109
Velika Kladuša	4.333	651	5	26	157	2.649	220	14	299	12	331
<b>Kanton Posavski</b>	<b>5.815</b>	<b>1.207</b>	<b>-</b>	<b>50</b>	<b>241</b>	<b>3.624</b>	<b>106</b>	<b>14</b>	<b>372</b>	<b>7</b>	<b>244</b>
Domaljevac-Šamac	474	59	-	6	30	358	13	-	6	-	8
Odžak	2.227	331	-	14	38	1.414	24	2	264	5	149
Orašje	3.114	817	-	30	173	1.852	69	12	102	2	87
<b>Tuzlanski kanton</b>	<b>90.518</b>	<b>20.011</b>	<b>530</b>	<b>588</b>	<b>1.848</b>	<b>42.564</b>	<b>832</b>	<b>978</b>	<b>18.409</b>	<b>1.019</b>	<b>4.857</b>
Banovići	4.811	808	9	38	32	1.288	9	202	1.819	72	581
Čelić	915	208	-	7	15	501	6	2	129	2	52
Doboj - Istok	1.580	311	-	18	31	1.046	34	1	65	1	91
Grad Gračanica	9.578	1.591	3	34	195	4.193	103	35	2.903	68	490
Grad Gradačac	7.751	1.119	3	38	197	4.098	102	31	1.660	53	491
Grad Srebrenik	5.785	1.023	1	22	80	3.569	60	24	699	36	294
Grad Tuzla	35.730	10.611	500	345	854	16.021	362	329	5.331	577	1.645
Grad Žvinice	9.673	1.535	2	35	221	5.204	55	123	2.038	53	444
Kalesija	3.722	633	2	8	45	2.063	42	25	708	18	188
Kladanj	1.380	281	-	7	27	661	9	6	314	12	70
Lukavac	8.805	1.666	10	32	116	3.555	42	194	2.651	105	476
Sapna	461	132	-	3	29	247	8	1	18	1	25
Teočak	327	93	-	1	6	118	-	5	74	21	10
<b>Zeničko-dobojski kanton</b>	<b>72.426</b>	<b>13.214</b>	<b>231</b>	<b>445</b>	<b>2.798</b>	<b>33.102</b>	<b>925</b>	<b>1.748</b>	<b>14.980</b>	<b>607</b>	<b>5.052</b>
Breza	2.434	338	-	9	83	882	46	22	391	19	653
Doboj - Jug	1.373	184	-	3	32	889	7	2	178	-	81
Grad Visoko	8.459	1.239	1	90	291	3.725	156	41	2.454	14	539
Grad Zenica	24.054	5.893	214	163	1.328	10.026	289	1.045	3.977	61	1.435
Kakanj	5.825	992	2	29	273	2.288	36	296	1.380	202	358
Maglaj	3.749	563	-	11	117	1.778	16	169	890	57	159
Olovo	1.793	279	-	8	71	510	52	10	793	29	49
Tešanj	12.261	1.609	9	40	226	6.360	102	37	2.554	99	1.274
Usora	1.953	288	1	13	27	1.224	52	9	296	1	56
Vareš	1.439	378	1	8	43	599	27	21	244	44	83
Zavidovići	3.872	650	-	31	176	1.700	32	61	1.086	25	142
Žepče	5.214	801	3	40	131	3.121	110	35	737	56	223
<b>Bosansko-podrinjski kanton</b>	<b>6.198</b>	<b>1.295</b>	<b>45</b>	<b>83</b>	<b>134</b>	<b>2.845</b>	<b>90</b>	<b>61</b>	<b>1.467</b>	<b>25</b>	<b>281</b>
Foča	146	48	-	1	3	72	-	-	16	-	7
Grad Goražde	5.974	1.218	45	81	128	2.741	87	61	1.448	24	267
Pale	78	29	-	1	3	32	3	-	3	1	7



**9. ZAPOSLENI U PRAVNIM OSOBAMA PREMA STEPENU/STUPNJU STRUČNOG OBRAZOVANJA PO OPĆINAMA, MART/OŽUJAK 2024. - nastavak**  
**EMPLOYED IN LEGAL ENTITIES ACCORDING TO PROFESSIONAL QUALIFICATIONS BY MUNICIPALITIES, MARCH 2024 – continued**

	Ukupno <i>Total</i>	V S S <i>University</i>			VŠ <i>Higher</i>	SSS <i>Seco- ndary</i>	NS <i>Eleme- ntary</i>	VKV <i>Highly- skilled</i>	KV <i>Skilled</i>	PK <i>Semi- skilled</i>	NK <i>Unskilled</i>
		Svega <i>All</i>	Doktori <i>Doctors</i>	Magistri <i>Masters</i>							
<b>Srednjobosanski kanton</b>	<b>43.040</b>	<b>7.473</b>	<b>132</b>	<b>569</b>	<b>1.822</b>	<b>20.203</b>	<b>688</b>	<b>244</b>	<b>8.794</b>	<b>1.033</b>	<b>2.783</b>
Bugojno	4.730	623	4	41	202	2.456	31	25	956	149	288
Busovača	1.792	332	1	20	55	1.149	40	9	100	6	101
Dobretići	39	5	-	-	2	23	-	1	1	5	2
Donji Vakuf	1.977	290	-	27	109	838	43	9	269	141	278
Fojnica	1.976	316	-	25	48	1.032	69	9	245	44	213
Gornji Vakuf - Uskoplje	2.615	363	1	22	99	984	47	6	742	120	254
Jajce	3.497	567	-	20	82	1.944	93	17	615	19	160
Kiseljak	3.621	576	31	106	140	1.895	108	11	697	18	176
Kreševo	1.097	149	-	39	21	688	34	8	156	3	38
Novi Travnik	4.106	612	1	25	165	1.280	46	24	1.718	128	133
Travnik	11.506	2.863	94	191	685	4.870	144	83	1.461	393	1.007
Vitez	6.084	777	-	53	214	3.044	33	42	1.834	7	133
<b>Hercegovачko-neretvanski kanton</b>	<b>50.751</b>	<b>13.935</b>	<b>519</b>	<b>594</b>	<b>2.595</b>	<b>23.722</b>	<b>382</b>	<b>416</b>	<b>6.062</b>	<b>1.504</b>	<b>2.135</b>
Čitluk	4.537	735	-	63	175	2.587	35	9	927	1	68
Grad Čapljina	3.243	525	-	33	154	1.636	27	17	728	6	150
Grad Mostar	32.258	10.797	515	391	1.831	15.249	173	312	2.493	106	1.297
Jablanica	1.488	329	1	14	50	632	27	14	329	22	85
Konjic	5.909	833	1	21	187	1.732	53	45	1.262	1.365	432
Neum	820	135	1	4	23	544	3	4	95	-	16
Prozor	1.231	291	1	19	112	669	18	12	96	3	30
Ravno	142	35	-	4	6	82	3	-	15	-	1
Stolac	1.123	255	-	45	57	591	43	3	117	1	56
<b>Zapadnohercegovачki kanton</b>	<b>19.344</b>	<b>4.766</b>	<b>3</b>	<b>226</b>	<b>1.009</b>	<b>11.863</b>	<b>143</b>	<b>83</b>	<b>1.280</b>	<b>2</b>	<b>198</b>
Grad Ljubuški	4.037	1.053	-	36	179	2.084	58	17	594	-	52
Grad Široki Brijeg	7.883	2.180	1	134	382	5.038	43	36	168	1	35
Grude	3.788	808	1	32	230	2.259	8	18	407	1	57
Posušje	3.636	725	1	24	218	2.482	34	12	111	-	54
<b>Kanton Sarajevo</b>	<b>151.636</b>	<b>50.266</b>	<b>2.151</b>	<b>3.972</b>	<b>3.108</b>	<b>77.784</b>	<b>1.803</b>	<b>1.061</b>	<b>13.603</b>	<b>678</b>	<b>3.333</b>
Centar Sarajevo	43.402	19.754	1.202	1.402	1.259	18.241	664	382	1.686	246	1.170
Hadžići	4.892	932	1	60	37	3.235	58	18	527	1	84
Iliđža	23.647	5.227	160	498	388	15.659	347	109	1.506	73	338
Ilijaš	3.698	702	1	82	37	2.116	48	15	617	11	152
Novi Grad Sarajevo	28.727	7.738	40	477	487	15.660	398	197	3.716	66	465
Novo Sarajevo	27.277	10.032	601	1.004	645	13.857	112	198	1.469	211	753
Stari Grad Sarajevo	13.789	4.365	135	279	179	5.506	121	121	3.212	58	227
Tmovo	319	91	-	5	6	183	3	1	23	4	8
Vogošća	5.885	1.425	11	165	70	3.327	52	20	847	8	136
<b>Kanton 10</b>	<b>10.177</b>	<b>2.507</b>	<b>2</b>	<b>116</b>	<b>536</b>	<b>5.728</b>	<b>384</b>	<b>43</b>	<b>656</b>	<b>14</b>	<b>309</b>
Bosansko Grahovo	202	34	-	-	9	98	6	-	49	-	6
Drvar	848	111	-	5	30	538	7	-	138	-	24
Glamoč	435	103	-	2	4	239	4	7	34	7	37
Grad Livno	4.300	1.386	-	83	240	2.144	113	18	226	3	170
Kupres	1.331	270	-	13	91	673	201	12	72	3	9
Tomislavgrad	3.061	603	2	13	162	2.036	53	6	137	1	63

**10. ZAPOSLENE ŽENE U PRAVNIM OSOBAMA PREMA STEPENU/STUPNJU STRUČNOG OBRAZOVANJA PO OPĆINAMA, MART/OŽUJAK 2024.**  
**EMPLOYED WOMEN IN LEGAL ENTITIES ACCORDING TO PROFESSIONAL QUALIFICATIONS BY MUNICIPALITIES, MARCH 2024**

	Ukupno <i>Total</i>	V S S <i>University</i>			VŠ <i>Higher</i>	SSS <i>Seco- ndary</i>	NS <i>Eleme- ntary</i>	VKV <i>Highly- skilled</i>	KV <i>Skilled</i>	PK <i>Semi- skilled</i>	NK <i>Unskilled</i>
		Svega <i>All</i>	Doktori <i>Doctors</i>	Magistri <i>Masters</i>							
		<b>Federacija BiH/Federation of BiH</b>	<b>215.618</b>	<b>70.352</b>							
<b>Unsko-sanski kanton</b>	<b>14.719</b>	<b>3.990</b>	<b>96</b>	<b>126</b>	<b>864</b>	<b>7.293</b>	<b>358</b>	<b>30</b>	<b>1.329</b>	<b>26</b>	<b>829</b>
Bosanska Krupa	1.219	296	1	7	70	601	22	6	150	-	74
Bosanski Petrovac	412	91	-	-	13	176	7	-	87	1	37
Bužim	555	108	-	4	77	282	26	1	51	-	10
Grad Bihać	5.680	2.086	94	63	415	2.219	94	2	478	6	380
Grad Cazin	2.911	654	-	22	92	1.616	77	13	312	7	140
Ključ	566	95	-	7	30	333	12	-	71	1	24
Sanski Most	1.413	308	1	7	65	884	27	6	78	7	38
Velika Kladuša	1.963	352	-	16	102	1.182	93	2	102	4	126
<b>Kanton Posavski</b>	<b>2.556</b>	<b>672</b>	<b>-</b>	<b>29</b>	<b>121</b>	<b>1.469</b>	<b>64</b>	<b>-</b>	<b>90</b>	<b>1</b>	<b>139</b>
Domaljevac-Šamac	224	30	-	5	17	168	6	-	-	-	3
Odžak	864	176	-	6	18	516	16	-	55	1	82
Orašje	1.468	466	-	18	86	785	42	-	35	-	54
<b>Tuzlanski kanton</b>	<b>36.947</b>	<b>11.139</b>	<b>238</b>	<b>369</b>	<b>1.127</b>	<b>16.614</b>	<b>317</b>	<b>80</b>	<b>5.154</b>	<b>280</b>	<b>2.236</b>
Banovići	1.297	411	-	23	13	489	2	11	283	-	88
Čelić	357	108	-	5	11	143	1	-	63	-	31
Doboj - Istok	735	187	-	14	14	441	24	-	18	-	51
Grad Gračanica	4.114	873	1	18	115	1.781	67	7	954	52	265
Grad Gradačac	3.300	612	1	18	127	1.670	26	7	568	31	259
Grad Srebrenik	2.099	561	1	16	51	1.177	19	6	195	4	86
Grad Tuzla	15.559	6.063	226	215	527	6.584	122	24	1.152	179	908
Grad Živinice	3.625	859	1	25	141	1.952	28	9	465	2	169
Kalesija	1.483	348	-	6	27	722	15	6	267	7	91
Kladanj	541	136	-	5	16	284	4	4	71	1	25
Lukavac	3.526	891	8	24	70	1.221	6	6	1.082	3	247
Sapna	166	48	-	-	10	89	3	-	7	1	8
Teočak	145	42	-	-	5	61	-	-	29	-	8
<b>Zeničko-dobojski kanton</b>	<b>31.235</b>	<b>7.569</b>	<b>81</b>	<b>293</b>	<b>1.891</b>	<b>13.712</b>	<b>549</b>	<b>78</b>	<b>5.135</b>	<b>105</b>	<b>2.196</b>
Breza	814	201	-	6	58	424	5	3	86	-	37
Doboj - Jug	460	85	-	1	22	300	2	-	45	-	6
Grad Visoko	4.008	728	-	69	211	1.409	91	7	1.355	4	203
Grad Zenica	10.279	3.483	77	95	897	4.141	178	28	844	1	707
Kakanj	2.049	560	1	19	193	929	24	9	217	14	103
Maglaj	1.800	321	-	5	77	983	10	5	296	6	102
Olovo	782	137	-	4	43	178	30	1	366	-	27
Tešanj	5.609	905	1	26	152	2.822	45	5	842	64	774
Usora	837	152	-	5	22	542	44	4	45	-	28
Vareš	541	181	1	8	25	197	25	1	86	3	23
Zavidovići	1.702	332	-	25	107	646	20	10	533	7	47
Žepče	2.354	484	1	30	84	1.141	75	5	420	6	139
<b>Bosansko-podrinjski kanton</b>	<b>2.962</b>	<b>740</b>	<b>9</b>	<b>54</b>	<b>60</b>	<b>1.284</b>	<b>66</b>	<b>8</b>	<b>604</b>	<b>12</b>	<b>188</b>
Foča	59	27	-	-	1	22	-	-	8	-	1
Grad Goražde	2.871	695	9	54	58	1.251	66	8	596	11	186
Pale	32	18	-	-	1	11	-	-	-	1	1

**10. ZAPOSLENE ŽENE U PRAVNIM OSOBAMA PREMA STEPENU/STUPNJU STRUČNOG OBRAZOVANJA PO OPĆINAMA, MART/OŽUJAK 2024. - nastavak**  
**EMPLOYED WOMEN IN LEGAL ENTITIES ACCORDING TO PROFESSIONAL QUALIFICATIONS BY MUNICIPALITIES, MARCH 2024 – continued**

	Ukupno <i>Total</i>	V S S <i>University</i>			VŠ <i>Higher</i>	SSS <i>Seco- ndary</i>	NS <i>Eleme- ntary</i>	VKV <i>Highly- skilled</i>	KV <i>Skilled</i>	PK <i>Semi- skilled</i>	NK <i>Unskilled</i>
		Svega <i>All</i>	Doktori <i>Doctors</i>	Magistri <i>Masters</i>							
<b>Srednjobosanski kanton</b>	<b>18.757</b>	<b>4.269</b>	<b>26</b>	<b>363</b>	<b>1.105</b>	<b>8.472</b>	<b>384</b>	<b>18</b>	<b>2.668</b>	<b>532</b>	<b>1.309</b>
Bugojno	2.250	356	-	25	124	1.073	20	1	408	103	165
Busovača	732	194	-	14	38	400	21	-	37	2	40
Dobretići	10	3	-	-	-	5	-	-	1	-	1
Donji Vakuf	764	144	-	17	78	341	34	1	63	18	85
Fojnica	1.126	205	-	21	25	601	51	-	81	19	144
Gornji Vakuf - Uskoplje	1.041	190	-	16	47	335	19	1	259	78	112
Jajce	1.210	326	-	7	52	565	24	-	204	2	37
Kiseljak	1.431	342	11	67	92	735	55	-	148	13	46
Kreševo	379	94	-	30	10	231	13	1	26	-	4
Novi Travnik	1.568	331	-	19	102	587	34	-	342	104	68
Travnik	5.755	1.599	15	108	407	2.324	92	8	583	189	553
Vitez	2.491	485	-	39	130	1.275	21	6	516	4	54
<b>Hercegovačko-neretvanski kanton</b>	<b>24.475</b>	<b>8.403</b>	<b>297</b>	<b>367</b>	<b>1.579</b>	<b>10.476</b>	<b>224</b>	<b>49</b>	<b>1.778</b>	<b>773</b>	<b>1.193</b>
Čitluk	1.977	488	-	33	122	986	15	-	333	-	33
Grad Čapljina	1.596	338	-	23	98	813	9	4	267	-	67
Grad Mostar	16.139	6.515	295	232	1.112	6.777	125	34	726	35	815
Jablanica	564	179	-	12	26	250	3	3	75	1	27
Konjic	2.522	456	1	10	94	785	28	3	226	736	194
Neum	425	85	1	3	16	265	1	-	48	-	10
Prozor	548	152	-	16	65	266	7	4	38	-	16
Ravno	65	16	-	4	5	39	-	-	4	-	1
Stolac	639	174	-	34	41	295	36	1	61	1	30
<b>Zapadnohercegovački kanton</b>	<b>8.193</b>	<b>2.969</b>	<b>2</b>	<b>128</b>	<b>556</b>	<b>4.129</b>	<b>80</b>	<b>6</b>	<b>373</b>	<b>-</b>	<b>80</b>
Grad Ljubuški	1.935	680	-	25	109	875	32	1	212	-	26
Grad Široki Brijeg	3.135	1.336	1	72	186	1.505	27	3	61	-	17
Grude	1.597	491	1	19	132	880	6	1	72	-	15
Posušje	1.526	462	-	12	129	869	15	1	28	-	22
<b>Kanton Sarajevo</b>	<b>71.161</b>	<b>29.129</b>	<b>1.042</b>	<b>2.458</b>	<b>1.592</b>	<b>33.820</b>	<b>1.273</b>	<b>77</b>	<b>3.332</b>	<b>88</b>	<b>1.850</b>
Centar Sarajevo	23.659	11.896	616	898	628	9.248	493	39	514	33	808
Hadžići	2.069	530	-	40	17	1.246	37	5	205	1	28
Iliđža	10.130	2.779	80	323	152	6.432	209	7	396	9	146
Ilijaš	1.568	453	-	58	17	831	30	3	182	5	47
Novi Grad Sarajevo	12.657	4.654	18	309	292	6.246	280	6	922	6	251
Novo Sarajevo	13.581	5.845	271	572	342	6.429	86	4	465	18	392
Stari Grad Sarajevo	5.021	2.076	54	142	106	2.212	96	13	405	13	100
Trnovo	124	50	-	3	2	63	2	-	3	-	4
Vogošća	2.352	846	3	113	36	1.113	40	-	240	3	74
<b>Kanton 10</b>	<b>4.613</b>	<b>1.472</b>	<b>-</b>	<b>76</b>	<b>290</b>	<b>2.399</b>	<b>164</b>	<b>2</b>	<b>166</b>	<b>1</b>	<b>119</b>
Bosansko Grahovo	71	17	-	-	4	46	1	-	2	-	1
Drvar	369	76	-	4	20	200	2	-	57	-	14
Glamoč	152	52	-	2	1	85	3	-	1	-	10
Grad Livno	2.143	830	-	54	125	952	102	-	68	-	66
Kupres	407	115	-	6	39	207	28	2	14	1	1
Tomislavgrad	1.471	382	-	10	101	909	28	-	24	-	27

**11. ZAPOSLENI U PRAVNIM OSOBAMA PREMA STAROSNIM GRUPAMA PO OPĆINAMA, MART/OŽUJAK 2024.**  
**EMPLOYED IN LEGAL ENTITIES ACCORDING TO AGE GROUPS BY MUNICIPALITIES, MARCH 2024**

	Ukupno Total	do/to 18	19-24	25-29	30-34	35-39	40-44	45-49	50-54	55-59	60-64	65 +
<b>Federacija BiH/Federation of BiH</b>	<b>482.363</b>	<b>70</b>	<b>27.443</b>	<b>55.296</b>	<b>53.682</b>	<b>66.211</b>	<b>71.215</b>	<b>65.550</b>	<b>54.320</b>	<b>47.325</b>	<b>34.676</b>	<b>6.575</b>
<b>Unsko-sanski kanton</b>	<b>32.458</b>	<b>3</b>	<b>2.534</b>	<b>3.494</b>	<b>2.918</b>	<b>3.728</b>	<b>4.330</b>	<b>4.614</b>	<b>4.204</b>	<b>3.596</b>	<b>2.565</b>	<b>472</b>
Bosanska Krupa	3.079	-	267	335	300	364	376	438	375	346	227	51
Bosanski Petrovac	1.188	-	111	126	88	142	177	169	119	128	111	17
Bužim	1.341	-	84	145	132	187	194	212	194	128	56	9
Grad Bihać	11.840	-	642	1.158	992	1.324	1.553	1.733	1.728	1.449	1.073	188
Grad Cazin	6.033	1	540	679	615	719	855	866	782	609	308	59
Ključ	1.103	-	96	112	75	110	114	152	163	120	137	24
Sanski Most	3.541	1	390	472	290	346	403	416	417	404	336	66
Velika Kladuša	4.333	1	404	467	426	536	658	628	426	412	317	58
<b>Kanton Posavski</b>	<b>5.815</b>	<b>3</b>	<b>491</b>	<b>668</b>	<b>577</b>	<b>721</b>	<b>743</b>	<b>757</b>	<b>646</b>	<b>621</b>	<b>494</b>	<b>94</b>
Domaljevac-Šamac	474	-	36	55	55	64	67	71	47	38	34	7
Odžak	2.227	1	246	268	214	271	289	262	221	230	182	43
Orašje	3.114	2	209	345	308	386	387	424	378	353	278	44
<b>Tuzlanski kanton</b>	<b>90.518</b>	<b>14</b>	<b>5.361</b>	<b>9.775</b>	<b>9.981</b>	<b>12.416</b>	<b>13.255</b>	<b>11.900</b>	<b>10.407</b>	<b>9.575</b>	<b>6.796</b>	<b>1.038</b>
Banovići	4.811	3	106	262	416	673	745	701	768	705	400	32
Čelić	915	-	79	115	100	115	127	100	108	87	68	16
Doboj - Istok	1.580	-	92	191	189	239	247	200	179	139	87	17
Grad Gračanica	9.578	3	738	1.058	1.096	1.316	1.437	1.246	1.097	892	590	105
Grad Gradačac	7.751	2	702	986	901	1.042	1.091	973	806	744	438	66
Grad Srebrenik	5.785	1	447	672	685	837	885	731	600	519	358	50
Grad Tuzla	35.730	2	1.626	3.828	3.756	4.693	5.155	4.819	4.181	4.002	3.150	518
Grad Žvinice	9.673	1	696	1.122	1.191	1.457	1.427	1.205	1.025	899	569	81
Kalesija	3.722	-	320	444	445	535	531	452	388	335	241	31
Kladanj	1.380	-	55	93	110	172	172	212	188	224	137	17
Lukavac	8.805	2	466	944	1.017	1.247	1.326	1.152	945	921	690	95
Sapna	461	-	14	33	46	50	62	65	78	69	38	6
Teočak	327	-	20	27	29	40	50	44	44	39	30	4
<b>Zeničko-dobojski kanton</b>	<b>72.426</b>	<b>9</b>	<b>4.872</b>	<b>8.170</b>	<b>7.974</b>	<b>10.110</b>	<b>10.559</b>	<b>9.889</b>	<b>8.002</b>	<b>7.301</b>	<b>4.775</b>	<b>765</b>
Breza	2.434	-	104	202	283	382	435	363	278	244	126	17
Doboj - Jug	1.373	-	120	188	186	185	183	161	140	121	78	11
Grad Visoko	8.459	-	595	995	978	1.209	1.341	1.263	941	704	379	54
Grad Zenica	24.054	2	1.165	2.342	2.501	3.291	3.443	3.282	2.875	2.803	2.026	324
Kakanj	5.825	-	231	507	529	810	882	853	719	771	468	55
Maglaj	3.749	1	341	494	410	550	494	440	332	357	281	49
Olovo	1.793	-	98	191	207	233	278	262	195	185	122	22
Tešanj	12.261	3	1.187	1.702	1.520	1.734	1.655	1.654	1.199	999	520	88
Usora	1.953	-	273	343	266	259	255	188	133	134	90	12
Vareš	1.439	-	69	151	164	206	191	189	165	148	124	32
Zavidovići	3.872	-	221	370	341	530	606	582	508	403	268	43
Žepče	5.214	3	468	685	589	721	796	652	517	432	293	58
<b>Bosansko-podrinjski kanton</b>	<b>6.198</b>	<b>-</b>	<b>317</b>	<b>737</b>	<b>775</b>	<b>930</b>	<b>1.009</b>	<b>828</b>	<b>580</b>	<b>557</b>	<b>377</b>	<b>88</b>
Foča	146	-	7	10	19	33	15	18	17	17	10	-
Grad Goražde	5.974	-	306	719	753	888	986	792	550	533	360	87
Pale	78	-	4	8	3	9	8	18	13	7	7	1

**11. ZAPOSLENI U PRAVNIM OSOBAMA PREMA STAROSNIM GRUPAMA PO OPĆINAMA, MART/OŽUJAK 2024. - nastavak**  
**EMPLOYED IN LEGAL ENTITIES ACCORDING TO AGE GROUPS BY MUNICIPALITIES, MARCH 2024- continued**

	Ukupno Total	do/to 18	19-24	25-29	30-34	35-39	40-44	45-49	50-54	55-59	60-64	65 +
<b>Srednjobosanski kanton</b>	<b>43.040</b>	<b>10</b>	<b>2.863</b>	<b>4.811</b>	<b>4.729</b>	<b>6.002</b>	<b>6.592</b>	<b>6.017</b>	<b>4.871</b>	<b>3.956</b>	<b>2.702</b>	<b>487</b>
Bugojno	4.730	-	301	566	549	636	642	618	576	491	296	55
Busovača	1.792	-	119	202	192	299	299	244	163	150	113	11
Dobretići	39	-	2	5	2	8	6	7	3	5	1	-
Donji Vakuf	1.977	-	82	208	208	264	311	296	266	202	118	22
Fojnica	1.976	-	109	179	206	265	321	299	236	215	133	13
Gornji Vakuf - Uskoplje	2.615	1	181	267	300	329	376	366	320	244	201	30
Jajce	3.497	1	279	404	368	418	504	527	365	343	241	47
Kiseljak	3.621	-	279	428	432	553	574	477	370	261	199	48
Kreševo	1.097	-	53	128	128	180	168	146	105	102	65	22
Novi Travnik	4.106	1	327	477	520	622	617	493	392	340	278	39
Travnik	11.506	5	653	1.218	1.175	1.561	1.812	1.684	1.462	1.074	715	147
Vitez	6.084	2	478	729	649	867	962	860	613	529	342	53
<b>Hercegovačko-neretvanski kanton</b>	<b>50.751</b>	<b>9</b>	<b>2.156</b>	<b>5.701</b>	<b>5.733</b>	<b>6.833</b>	<b>7.417</b>	<b>6.797</b>	<b>5.735</b>	<b>5.118</b>	<b>4.357</b>	<b>895</b>
Čitluk	4.537	-	234	533	539	637	610	557	517	499	323	88
Grad Čapljina	3.243	1	149	317	312	396	456	444	408	384	299	77
Grad Mostar	32.258	6	1.239	3.802	3.758	4.480	4.773	4.308	3.455	3.057	2.820	560
Jablanica	1.488	-	33	90	131	176	247	191	212	186	190	32
Konjic	5.909	2	364	641	651	757	852	851	725	593	399	74
Neum	820	-	46	82	90	81	100	85	88	134	90	24
Prozor	1.231	-	36	114	108	147	173	175	178	139	140	21
Ravno	142	-	6	16	15	17	23	19	17	14	13	2
Stolac	1.123	-	49	106	129	142	183	167	135	112	83	17
<b>Zapadnohercegovački kanton</b>	<b>19.344</b>	<b>8</b>	<b>1.179</b>	<b>2.554</b>	<b>2.643</b>	<b>2.799</b>	<b>2.535</b>	<b>2.390</b>	<b>2.029</b>	<b>1.695</b>	<b>1.284</b>	<b>228</b>
Grad Ljubuški	4.037	2	230	437	494	573	548	553	465	388	294	53
Grad Široki Brijeg	7.883	6	468	1.068	1.168	1.171	1.012	921	810	682	491	86
Grude	3.788	-	223	506	486	570	488	492	383	338	253	49
Posušje	3.636	-	258	543	495	485	487	424	371	287	246	40
<b>Kanton Sarajevo</b>	<b>151.636</b>	<b>14</b>	<b>7.153</b>	<b>18.417</b>	<b>17.290</b>	<b>21.514</b>	<b>23.388</b>	<b>20.982</b>	<b>16.587</b>	<b>13.709</b>	<b>10.286</b>	<b>2.296</b>
Centar Sarajevo	43.402	-	1.375	4.642	4.489	5.755	6.930	6.665	4.859	4.327	3.640	720
Hadžići	4.892	-	307	533	505	693	792	734	485	475	313	55
Ilidža	23.647	1	1.388	3.224	3.083	3.577	3.524	3.087	2.377	1.766	1.273	347
Ilijaš	3.698	1	258	479	449	553	668	454	330	279	184	43
Novi Grad Sarajevo	28.727	4	1.359	3.424	3.276	4.085	4.726	4.125	2.999	2.635	1.684	410
Novo Sarajevo	27.277	6	1.120	3.511	3.181	3.867	4.173	3.537	2.763	2.556	2.093	470
Stari Grad Sarajevo	13.789	1	993	1.836	1.555	2.021	1.529	1.619	2.182	1.163	736	154
Tmovo	319	-	19	32	30	52	49	35	40	39	18	5
Vogošća	5.885	1	334	736	722	911	997	726	552	469	345	92
<b>Kanton 10</b>	<b>10.177</b>	<b>-</b>	<b>517</b>	<b>969</b>	<b>1.062</b>	<b>1.158</b>	<b>1.387</b>	<b>1.376</b>	<b>1.259</b>	<b>1.197</b>	<b>1.040</b>	<b>212</b>
Bosansko Grahovo	202	-	13	9	16	24	41	29	27	18	17	8
Drvar	848	-	34	55	72	104	136	97	100	126	103	21
Glamoč	435	-	19	37	43	35	76	70	56	51	39	9
Grad Livno	4.300	-	218	414	471	468	584	571	502	523	443	106
Kupres	1.331	-	29	94	120	190	174	188	162	169	184	21
Tomislavgrad	3.061	-	204	360	340	337	376	421	412	310	254	47

**12. ZAPOSLENE ŽENE U PRAVNIM OSOBAMA PREMA STAROSNIM GRUPAMA PO OPĆINAMA, MART/OŽUJAK 2024.**  
**EMPLOYED WOMEN IN LEGAL ENTITIES ACCORDING TO AGE GROUPS BY MUNICIPALITIES, MARCH 2024**

	Ukupno Total	do/to 18	19-24	25-29	30-34	35-39	40-44	45-49	50-54	55-59	60-64	65 +
<b>Federacija BiH/Federation of BiH</b>	<b>215.618</b>	<b>19</b>	<b>9.986</b>	<b>25.045</b>	<b>24.574</b>	<b>30.923</b>	<b>33.844</b>	<b>29.947</b>	<b>23.524</b>	<b>20.033</b>	<b>15.423</b>	<b>2.300</b>
<b>Unsko-sanski kanton</b>	<b>14.719</b>	-	<b>997</b>	<b>1.580</b>	<b>1.317</b>	<b>1.765</b>	<b>2.172</b>	<b>2.199</b>	<b>1.933</b>	<b>1.537</b>	<b>1.067</b>	<b>152</b>
Bosanska Krupa	1.219	-	81	147	111	168	143	178	154	131	94	12
Bosanski Petrovac	412	-	26	40	28	55	73	76	39	48	24	3
Bužim	555	-	31	58	52	75	82	89	91	55	21	1
Grad Bihać	5.680	-	276	528	459	661	811	836	795	686	547	81
Grad Cazin	2.911	-	242	329	303	368	474	450	387	244	99	15
Ključ	566	-	47	67	43	53	72	80	88	60	50	6
Sanski Most	1.413	-	134	195	117	142	188	192	168	132	126	19
Velika Kladuša	1.963	-	160	216	204	243	329	298	211	181	106	15
<b>Kanton Posavski</b>	<b>2.556</b>	-	<b>167</b>	<b>286</b>	<b>249</b>	<b>338</b>	<b>352</b>	<b>358</b>	<b>278</b>	<b>266</b>	<b>229</b>	<b>33</b>
Domaljevac-Šamac	224	-	14	25	26	33	29	39	21	18	16	3
Odžak	864	-	77	101	90	116	124	94	81	99	70	12
Orašje	1.468	-	76	160	133	189	199	225	176	149	143	18
<b>Tuzlanski kanton</b>	<b>36.947</b>	<b>3</b>	<b>1.841</b>	<b>4.025</b>	<b>4.315</b>	<b>5.598</b>	<b>6.029</b>	<b>5.022</b>	<b>3.955</b>	<b>3.322</b>	<b>2.535</b>	<b>302</b>
Banovići	1.297	-	20	89	130	205	230	177	169	132	134	11
Čelić	357	-	21	41	39	54	61	41	43	27	27	3
Doboj - Istok	735	-	39	89	102	133	115	79	86	60	29	3
Grad Gračanica	4.114	1	284	458	492	626	711	562	464	317	179	20
Grad Gradačac	3.300	-	252	430	392	496	483	438	359	287	151	12
Grad Srebrenik	2.099	-	120	243	256	356	368	284	204	149	111	8
Grad Tuzla	15.559	-	580	1.625	1.739	2.188	2.426	2.153	1.675	1.587	1.395	191
Grad Živinice	3.625	1	200	441	510	632	622	464	330	246	160	19
Kalesija	1.483	-	117	192	180	238	244	187	140	103	76	6
Kladanj	541	-	21	34	54	79	84	82	61	75	46	5
Lukavac	3.526	1	165	352	389	543	626	519	384	307	216	24
Sapna	166	-	8	17	17	25	32	20	22	18	7	-
Teočak	145	-	14	14	15	23	27	16	18	14	4	-
<b>Zeničko-dobojski kanton</b>	<b>31.235</b>	<b>6</b>	<b>1.903</b>	<b>3.728</b>	<b>3.634</b>	<b>4.659</b>	<b>4.775</b>	<b>4.248</b>	<b>3.257</b>	<b>2.785</b>	<b>2.008</b>	<b>232</b>
Breza	814	-	25	80	93	147	148	105	88	74	47	7
Doboj - Jug	460	-	17	66	62	60	74	64	46	42	25	4
Grad Visoko	4.008	-	238	511	478	580	664	607	427	317	171	15
Grad Zenica	10.279	1	433	1.024	1.136	1.543	1.570	1.387	1.115	1.035	921	114
Kakanj	2.049	-	82	217	207	324	328	288	202	223	164	14
Maglaj	1.800	1	158	239	207	283	236	219	177	162	102	16
Olovo	782	-	51	90	104	110	118	105	85	64	51	4
Tešanj	5.609	2	481	755	739	840	773	788	551	440	216	24
Usora	837	-	122	164	104	108	119	80	56	46	32	6
Vareš	541	-	17	58	64	83	75	80	65	50	46	3
Zavidovići	1.702	-	78	184	167	259	293	251	207	147	106	10
Žepče	2.354	2	201	340	273	322	377	274	238	185	127	15
<b>Bosansko-podrinjski kanton</b>	<b>2.962</b>	-	<b>139</b>	<b>338</b>	<b>368</b>	<b>441</b>	<b>485</b>	<b>401</b>	<b>310</b>	<b>267</b>	<b>190</b>	<b>23</b>
Foča	59	-	3	5	10	10	6	7	7	8	3	-
Grad Goražde	2.871	-	136	328	358	428	475	384	298	257	184	23
Pale	32	-	-	5	0	3	4	10	5	2	3	-

**12. ZAPOSLENE ŽENE U PRAVNIM OSOBAMA PREMA STAROSNIM GRUPAMA PO OPĆINAMA, MART/OŽUJAK 2024. - nastavak**  
**EMPLOYED WOMEN IN LEGAL ENTITIES ACCORDING TO AGE GROUPS OF MUNICIPALITIES, MARCH 2024 - continued**

	Ukupno Total	do/to 18	19-24	25-29	30-34	35-39	40-44	45-49	50-54	55-59	60-64	65 +
<b>Srednjobosanski kanton</b>	<b>18.757</b>	<b>3</b>	<b>1.078</b>	<b>2.149</b>	<b>2.159</b>	<b>2.735</b>	<b>2.966</b>	<b>2.641</b>	<b>1.976</b>	<b>1.620</b>	<b>1.261</b>	<b>169</b>
Bugojno	2.250	-	106	280	280	307	314	307	278	216	146	16
Busovača	732	-	39	84	89	119	129	100	55	53	58	6
Dobretići	10	-	-	1	1	2	3	3	-	-	-	-
Donji Vakuf	764	-	27	100	87	126	135	88	74	62	53	12
Fojnica	1.126	-	64	106	118	152	193	182	124	109	69	9
Gornji Vakuf - Uskoplje	1.041	-	71	101	126	146	145	144	126	88	87	7
Jajce	1.210	-	78	149	146	166	204	186	108	89	69	15
Kiseljak	1.431	-	102	178	190	232	225	181	123	101	83	16
Kreševo	379	-	14	50	46	72	53	53	30	35	22	4
Novi Travnik	1.568	1	105	179	195	264	218	199	140	122	133	12
Travnik	5.755	1	316	644	601	771	936	844	676	528	380	58
Vitez	2.491	1	156	277	280	378	411	354	242	217	161	14
<b>Hercegovačko-neretvanski kanton</b>	<b>24.475</b>	<b>2</b>	<b>788</b>	<b>2.751</b>	<b>2.758</b>	<b>3.288</b>	<b>3.607</b>	<b>3.380</b>	<b>2.818</b>	<b>2.523</b>	<b>2.170</b>	<b>390</b>
Čitluk	1.977	-	77	230	225	257	256	246	263	239	150	34
Grad Čapljina	1.596	-	53	153	144	184	227	237	196	197	165	40
Grad Mostar	16.139	1	509	1.897	1.884	2.232	2.333	2.202	1.772	1.575	1.488	246
Jablanica	564	-	7	37	68	90	104	72	65	56	53	12
Konjic	2.522	1	87	268	252	330	428	369	321	265	164	37
Neum	425	-	26	43	55	32	51	46	43	74	47	8
Prozor	548	-	12	53	45	75	78	98	79	51	51	6
Ravno	65	-	2	7	8	12	8	9	5	8	6	-
Stolac	639	-	15	63	77	76	122	101	74	58	46	7
<b>Zapadnohercegovački kanton</b>	<b>8.193</b>	<b>-</b>	<b>300</b>	<b>1.068</b>	<b>1.074</b>	<b>1.186</b>	<b>1.121</b>	<b>1.125</b>	<b>907</b>	<b>754</b>	<b>590</b>	<b>68</b>
Grad Ljubuški	1.935	-	76	205	234	276	258	276	223	198	166	23
Grad Široki Brijeg	3.135	-	112	423	429	457	425	421	344	281	221	22
Grude	1.597	-	52	222	206	252	211	229	163	154	97	11
Posušje	1.526	-	60	218	205	201	227	199	177	121	106	12
<b>Kanton Sarajevo</b>	<b>71.161</b>	<b>5</b>	<b>2.583</b>	<b>8.655</b>	<b>8.235</b>	<b>10.374</b>	<b>11.667</b>	<b>9.894</b>	<b>7.487</b>	<b>6.434</b>	<b>4.958</b>	<b>869</b>
Centar Sarajevo	23.659	-	705	2.560	2.431	3.222	3.932	3.487	2.537	2.402	2.046	337
Hadžići	2.069	-	99	202	214	302	363	330	237	172	129	21
Iliđza	10.130	-	479	1.499	1.430	1.604	1.548	1.314	949	726	490	91
Ilijaš	1.568	1	86	216	209	270	310	171	127	95	68	15
Novi Grad Sarajevo	12.657	3	426	1.506	1.493	1.909	2.153	1.813	1.350	1.098	764	142
Novo Sarajevo	13.581	-	481	1.758	1.596	1.980	2.125	1.781	1.425	1.262	1.003	170
Stari Grad Sarajevo	5.021	1	216	611	561	659	782	675	605	488	353	70
Trnovo	124	-	6	16	13	24	18	15	16	13	2	1
Vogošća	2.352	-	85	287	288	404	436	308	241	178	103	22
<b>Kanton 10</b>	<b>4.613</b>	<b>-</b>	<b>190</b>	<b>465</b>	<b>465</b>	<b>539</b>	<b>670</b>	<b>679</b>	<b>603</b>	<b>525</b>	<b>415</b>	<b>62</b>
Bosansko Grahovo	71	-	2	5	6	8	19	10	11	3	4	3
Drvar	369	-	11	23	32	48	67	31	45	58	46	8
Glamoč	152	-	7	18	13	16	30	21	18	16	11	2
Grad Livno	2.143	-	88	215	223	251	307	316	266	255	187	35
Kupres	407	-	9	38	35	59	50	68	53	43	48	4
Tomislavgrad	1.471	-	73	166	156	157	197	233	210	150	119	10

**13. ZAPOSLENI U PRAVNIM OSOBAMA PREMA VISINI NETO PLAĆE U FBiH, MART/OŽUJAK 2024.**  
**EMPLOYED IN LEGAL ENTITIES ACCORDING TO AMOUNT OF NET WAGES IN FBiH, MARCH 2024**

	do 350 KM and less BAM	351 - 500 KM/BAM	501 - 650 KM/BAM	651 - 800 KM/BAM	801 - 950 KM/BAM	951 - 1100 KM/BAM	1101 - 1400 KM/BAM	1401 - 1700 KM/BAM	1701 - 2000 KM/BAM	2001 - 2500 KM/BAM	2501+ KM/BAM
<b>zaposleni</b> <i>Employed</i>	13.220	4.223	10.216	136.405	38.180	35.609	66.130	57.897	41.661	35.122	43.700
<b>struktura u %</b> <i>Structure in %</i>	2,7	0,9	2,1	28,3	7,9	7,4	13,7	12,0	8,6	7,3	9,1



## METODOLOŠKA OBJAŠNJENJA

### Izvori podataka

Od 2020. godine podaci o strukturama zaposlenih u pravnim osobama prema stepenu/stupnju stručnog obrazovanja i starosnim grupama u Federaciji BiH dobiveni su statističkom obradom podataka koji su preuzeti iz administrativnog izvora, Porezne uprave Federacije BiH (puni obuhvat), sa stanjem 31. mart/ožujak.

Od 2023. godine podaci o zaposlenima prema visini neto plaće u Federaciji BiH dobiveni su statističkom obradom podataka koji su preuzeti iz administrativnog izvora, Porezne uprave Federacije BiH (puni obuhvat), sa stanjem 31. mart/ožujak.

### Obuhvat i uporedivost

Broj zaposlenih u pravnim osobama prema strukturama zaposlenih obuhvaća broj zaposlenih osoba koje su evidentirane u Jedinstvenom sistemu registracije, kontrole i naplate doprinosa a zaposlene su u poslovnim subjektima i pripadajućim jedinicama koje posluju na teritoriji Federacije BiH.

Istraživanjem nisu obuhvaćeni zaposleni u obrtu i srodnim djelatnostima.

### Definicije

**Zaposleni** su osobe koje su zasnovale radni odnos s poslodavcem (pravnom ili fizičkom osobom - obrt) na neodređeno ili određeno vrijeme, neovisno od dužine radnog vremena i vlasništva pravne osobe.

**Stepen/Stupanj stručnog obrazovanja** podrazumijeva najviši obrazovni nivo koju je zaposleni stekao završavanjem odgovarajuće škole, završavanjem kursa ili polaganjem ispita kojima se dobiva obrazovni stepen/stupanj ili provjeravanjem stručnosti u poslovnom subjektu. Za svaki stepen/stupanj stručnog obrazovanja osoba posjeduje odgovarajući službeni dokument (diplomu, svjedocanstvo, rješenje ili potvrdu).

### Kratice

VSS visoka stručna sprema  
VŠ viša školska sprema  
SSS srednja stručna sprema  
NSS niža stručna sprema  
VKV visokokvalifikovan  
KV kvalifikovan  
PKV polukvalifikovan  
NKV nekvalifikovan

KM konvertibilna marka  
KD BiH 2010 Klasifikacija djelatnosti

### Znakovi

- Nema pojave

## NOTES OF METHODOLOGY

### Sources of data

From 2020 data on the structure of employees in legal entities according to qualification and age groups in the Federation of BiH were obtained by statistical processing data that were taken from the administrative source, the Tax Administration of the Federation of BiH (full coverage), to the situation 31. March.

From 2023 data on employed according to amount of net wage in the Federation of BiH were obtained by statistical processing data that were taken from the administrative source, the Tax Administration of the Federation of BiH (full coverage), to the situation 31. March.

### Coverage and comparability

The number of employees in legal entities according to employee structures includes the number of employees who are registered in the Unified System of Registration, control and collection of contributions and who are employed in business entities and related units operating in the territory of the Federation of Bosnia and Herzegovina.

The survey did not include employees in craft and related activities.

### Definitions

**Employed** are persons who have signed a contract with an employer (legal entities or owners of craft and trade) for a fixed or an unspecified period of time, irrespective of the type of ownership and of whether they work full-time or less than full-time.

**Professional attainment** is the highest level of education acquired by a person upon completing an appropriate school or course, sitting for exams or receiving recognition based on proving professional attainment in a business entity. The level acquired can be proved by an appropriate official document (diploma, certificate, degree).

### Abbreviations

University  
Higher  
Secondary  
Elementary  
Highlyskilled  
Skilled/Semisilled  
Unskilled

KM convertible marks  
KD BiH 2010 Classification of activities

### Symbols

- no occurrence

**Izdaje Federalni zavod za statistiku FBiH, 71000 Sarajevo, Zelenih beretki 26**  
*Published by the Institute for Statistics of FBiH, 71000 Sarajevo, Zelenih beretki 26*

**Telefon/Phone: +387 (33) 20 64 52, Fax: +387 (33) 22 61 51**  
Elektronska pošta/E-mail: [fedstat@fzs.ba](mailto:fedstat@fzs.ba), Internetska stranica/Web site: <http://www.fzs.ba>

**Odgovorne osobe:**

*Person responsible:*

**Samka Avdić, šef Odsjeka za statistiku tržišta rada**

*Samka Avdić, Head of Department for Labour Market Statistics*

**Hidaeta Čolović, pomoćnik direktora sektora za statistiku stanovništva i društvene statistike**

*Hidaeta Čolović, Assistant director of Department for Population and Social Statistics*

**Doc. dr. Emir Kremić, direktor**

*Assist. Prof. Dr. Emir Kremić, Director General*

**Pripremili: Samka Avdić, Mujesira Salihagić, Mugdim Hadžalić**

*Prepared by: Samka Avdić, Mujesira Salihagić, Mugdim Hadžalić*

**Molimo korisnike da pri korištenju podataka navedu izvor**

*Users are kindly requested to state the source*

**Podaci iz ovog saopćenja objavljuju se na internetu**

*First Release data are published on the Internet*