



Bosna i Hercegovina  
Federacija Bosne i Hercegovine  
**Federalni zavod za statistiku**  
**Institute for Statistics of FBiH**

ISSN 1512-5106

**ZAPOSLENOST, NEZAPOSLENOST I PLAĆE**  
**EMPLOYMENT, UNEMPLOYMENT AND WAGE**  
**2022**



**STATISTIČKI BILTEN**  
**363 STATISTICAL BULLETIN 363**

Sarajevo, 2023.

**ZAPOSLENOST, NEZAPOSLENOST I PLAĆE**  
**EMPLOYMENT, UNEMPLOYMENT AND WAGE**  
**2022**

**363** STATISTIČKI BILTEN  
STATISTICAL BULLETIN **363**

Sarajevo, 2023.

**Izdavač: Federalni zavod za statistiku, Zelenih beretki 26, 71000 Sarajevo**  
*Publisher: Institute for statistics of FB&H, Zelenih beretki 26, 71000 Sarajevo*  
Telefon/Phone /Faks: +387 33 20 64 52  
Elektronska pošta/E-mail : fedstat@fzs.gov.ba  
Internetska stranica/Web site : <http://www.fzs.ba>

**Odgovara: Doc. dr. Emir Kremić, direktor**  
*Person responsible: Assist. Prof. Emir Kremić, Director General*

**Urednički odbor: Šemso Šurković, Amer Korić, Hidaeta Čolović,  
Belmira Hadžiabdić, Sanela Čengić, Dijana Simanić**  
*Editorial: Šemso Šurković, Amer Korić, Hidaeta Čolović,  
Belmira Hadžiabdić, Sanela Čengić, Dijana Simanić*

**Pripremili: Mugdim Hadžalić, Mujesira Salihagić, Samka Avdić**  
*Prepared by: Mugdim Hadžalić, Mujesira Salihagić, Samka Avdić*

**Molimo korisnike da prilikom korišćenja podataka navedu izvor**  
*Users are kindly requested to state the source*

**Štampano/Tiskano u 25 primjeraka**  
*Printed in 25 copies*

**Obavijest daje Odsjek za odnose s javnošću i biblioteka**  
*Information is available at the Department of Public Relations and Library*  
Telefon/Phone : +387 33 21 50 43  
Pretplata publikacija/Subscription : +387 33 21 50 43

# ZAPOSLENOST, NEZAPOSLENOST I PLAĆE

## EMPLOYMENT, UNEMPLOYMENT AND WAGES

### PREDGOVOR

Statistički bilten "Zaposlenost, nezaposlenost i plaće" je publikacija Federalnog zavoda za statistiku, koja na sveobuhvatan način prikazuje statističke podatke o zaposlenosti, nezaposlenosti i plaćama u Federaciji Bosne i Hercegovine.

Bilten se sastoji iz četiri dijela:

U prvom dijelu - Zaposleni, objavljeni su podaci o broju zaposlenih osoba u Federaciji BiH u periodu 2018-2022. godine po mjesecima i spolu, te područjima i oblastima Klasifikacije djelatnosti KD BiH 2010.

U drugom dijelu - Nezaposleni, prikazani su podaci o broju nezaposlenih osoba u Federaciji BiH u periodu 2018-2022. godine po mjesecima i spolu, te prema stepenu stručnog obrazovanja i starosnim grupama, stanje decembar.

U trećem dijelu - Plaće, objavljeni su podaci o prosječnim neto i bruto plaćama u Federaciji BiH u periodu 2018-2022. godine po područjima Klasifikacije djelatnosti KD BiH 2010 i mjesecima, kao i nominalni i realni indeksi.

U četvrtom dijelu - Pregled po kantonima i općinama, objavljeni su podaci o broju zaposlenih po kantonima i područjima Klasifikacije djelatnosti KD BiH 2010 i po općinama i spolu u periodu 2018-2022. godine, te neto i bruto plaćama po područjima Klasifikacije djelatnosti KD BiH 2010 i po općinama u periodu 2018-2022. godine.

Izražavamo zahvalnost svima koji su učestvovali u pripremi statističkih podataka koji se publikuju u ovom biltenu.

Federalni zavod za statistiku će biti zahvalan na svim primjedbama i sugestijama koje bi mogle doprinijeti poboljšanju kvaliteta ove publikacije.

U cilju boljeg razumijevanja podataka prezentiranih u ovom Biltenu, korisnike podataka upućujemo na data metodološka objašnjenja.

### PREFACE

*Statistical bulletin "Employment, unemployment and wages" is a publication of the Institute for Statistics of FBiH which present data on persons in employment, unemployment and wages in Federation of BiH.*

*The Bulletin is composed of four sections:*

*In the first section, Employed persons, data on number of employed persons in Federation of BiH for the period 2018-2022 are presented by month and sex and section and division KD BiH 2010.*

*In the second section, Unemployed persons, data on number of unemployed persons in Federation of BiH for the period 2018-2022 are presented by month and sex, and by level of professional and age group, situation December.*

*In the third section, Wages, data on average net and gross wages in Federation of BiH for the period 2018-2022 are presented by section KD BiH 2010 and month, as well as nominal and real indices.*

*In the fourth section, Review by cantons and municipalities, data on number of employed persons in Federation of BiH by cantons and sections KD BiH 2010 and by municipalities and sex for the period 2018-2022 and net and gross wages by sections KD BiH 2010 and wages by municipalities for the period 2018-2022.*

*We would like to express our to everone who participated in the preparation of statistical data published in this bulletin.*

*Institute for Statistics of FBiH will be grateful for any remarks and suggestions which contribute to the improvement of the quality of this publication.*

*In order to better understand the data presented in this Bulletin, data users are referring to given methodological explanations.*

Doc. Dr. Emir Kremić, direktor  
Federalnog zavoda za statistiku

Assist. Prof. Emir Kremić, Director general  
Institute for Statistics of FBiH



**S A D R Ź A J**  
**C O N T E N S**

**STRANA**  
**PAGE**

<b>PREDGOVOR</b> <i>PREFACE</i>	3
<b>SADRŽAJ</b> <i>CONTENS</i>	5
<b>METODOLOŠKA OBJAŠNENJA</b> <i>NOTES ON METHODOLOGY</i>	6
<b>1. ZAPOSLENI</b> <i>EMPLOYED PERSONS</i>	
1.1. <b>Zaposleni u Federaciji BiH po mjesecima</b> <i>Employed persons in Federation of BiH by months</i>	9
1.2. <b>Zaposleni u Federaciji BiH po područjima KD BiH 2010</b> <i>Employed persons by sections KD BiH 2010</i>	10
1.3. <b>Zaposleni u Federaciji BiH po područjima i oblastima KD BiH 2010</b> <i>Employed persons by sections and divisions KD BiH 2010</i>	11
<b>2. NEZAPOSLENI</b> <i>UNEMPLOYED PERSONS</i>	
2.1. <b>Nezaposleni u Federaciji BiH po mjesecima</b> <i>Unemployed persons in Federation of BiH by months</i>	14
2.2. <b>Nezaposleni u Federaciji BiH prema stepenu stručnog obrazovanja, stanje decembar/prosinac</b> <i>Unemployed persons in Federation of BiH by level of professional, situation December</i>	15
2.3. <b>Nezaposleni u Federaciji BiH prema intervalima starosti, stanje decembar/prosinac</b> <i>Unemployed persons in Federation of BiH by age groups, situation December</i>	15
<b>3. PLAĆE</b> <i>WAGES</i>	
3.1. <b>Neto plaće u Federaciji BiH po mjesecima</b> <i>Net wages in Federation of BiH by months</i>	16
3.2. <b>Bruto plaće u Federaciji BiH po mjesecima</b> <i>Gross wages in Federation of BiH by months</i>	16
3.3. <b>Neto plaće u Federaciji BiH po područjima KD BiH 2010 i mjesecima</b> <i>Net wages in Federation of BiH by sections KD BiH 2010 and months</i>	17
3.4. <b>Bruto plaće u Federaciji BiH po područjima KD BiH 2010 i mjesecima</b> <i>Gross wages in Federation of BiH by sections KD BiH 2010 and months</i>	18
3.5. <b>Nominalni i realni indeksi prosječnih neto plaća u Federaciji BiH</b> <i>Nominal and real indices of average net wage in Federation of BiH</i>	19
<b>4. PREGLED PO KANTONIMA I OPĆINAMA</b> <i>REVIEW BY CANTONS AND MUNICIPALITIES</i>	
4.1. <b>Zaposleni po kantonima i područjima KD BiH 2010</b> <i>Employed persons by cantons and by sections KD BiH 2010</i>	20
4.2. <b>Zaposleni u Federaciji BiH po općinama i spolu</b> <i>Employed persons in Federation of BiH by municipalities and sex</i>	22
4.3. <b>Neto plaće po kantonima i područjima KD BiH 2010</b> <i>Net wages by cantons and by sections KD BiH 2010</i>	27
4.4. <b>Bruto plaće po kantonima i područjima KD BiH 2010</b> <i>Gross wages by cantons and by sections KD BiH 2010</i>	29
4.5. <b>Neto plaće u Federaciji BiH po općinama</b> <i>Net wages in Federation of BiH by municipalities</i>	31
4.6. <b>Bruto plaće u Federaciji BiH po općinama</b> <i>Gross wages in Federation of BiH by municipalities</i>	33

# ZAPOSLENOST, NEZAPOSLENOST I PLAĆE

## EMPLOYMENT, UNEMPLOYMENT AND WAGES

### METODOLOŠKA OBJAŠNJENJA

#### Izvori i metode prikupljanja podataka

##### Zaposlenost

Podaci o ukupnom broju zaposlenih osoba u Federaciji BiH, dobiveni su obradom podataka koji su preuzeti iz administrativnog izvora, Porezne uprave Federacije BiH - puni obuhvat.

U broj zaposlenih osoba u FBiH uključeni su zaposleni u pravnim osobama i obrtu i srodnim djelatnostima.

Istraživanjem su obuhvaćene pravne osobe svih oblika vlasništva, tijela državne vlasti svih nivoa, ustanove i druge organizacije, po organizaciono teritorijalnom principu na nivou općine, koje posluju na teritoriji Federacije BiH.

Istraživanjem o zaposlenima u pravnim osobama obuhvaćeni su zaposleni koji imaju zasnovan radni odnos bez obzira na vrstu radnog odnosa i dužinu radnog vremena.

U ove podatke uključeni su i zaposleni u odbrani, s tim da nisu razvrstani po kantonima.

Istraživanjem o zaposlenima u obrtu i srodnim djelatnostima obuhvaćeni su zaposleni i vlasnici kojima je obrt osnovno zanimanje.

##### Nezaposlenost

Podaci o nezaposlenima preuzimaju se od Federalnog Zavoda za zapošljavanje.

##### Neto i bruto plaća

Podaci o prosječnoj mjesečnoj isplaćenoj neto i bruto plaći obračunavaju se na osnovu podataka prikupljenih Mjesečnim istraživanjem o plaćama zaposlenih (Rad-1).

Istraživanjem su obuhvaćene pravne osobe svih oblika vlasništva, tijela državne vlasti svih nivoa, ustanove i druge organizacije, po organizaciono teritorijalnom principu na nivou općine, koje posluju na teritoriji Federacije BiH, a imaju 10 i više zaposlenih.

Istraživanje o plaćama obuhvaća isplaćene neto i bruto plaće zaposlenih koji imaju zasnovan radni odnos, bez obzira na vrstu radnog odnosa i dužinu radnog vremena.

U obračun nisu uključene plaće pripadnika odbrane, kao ni plaće zaposlenih u obrtu i srodnim djelatnostima.

##### Definicije

**Zaposleni** obuhvaćaju zaposlenike u pravnim osobama i obrtu i srodnim djelatnostima i vlasnike obrta i srodne djelatnosti.

**Zaposlenici** su osobe koje su zasnovale radni odnos sa poslodavcem (pravnom ili fizičkom osobom), bez obzira na vrstu radnog odnosa i dužinu radnog vremena.

### NOTES ON METHODOLOGY

#### Sources and methods of data collection

##### Employment

Data on the total number of persons in paid employment in the Federation of BiH were obtained by processing data that were taken from the administrative source, the Tax Administration of the Federation of BiH - full coverage.

The number of employees in FBiH includes employees in legal entities and crafts and related activities.

The survey includes legal entities of all types of ownership, government bodies, institutions and other organizations according to the territorial organizational principle at the municipal level, that operate on the territory of the Federation of BiH.

The survey on persons in paid employment in legal entities includes all persons who have signed a work contract, regardless of the type of work contract and whether they work full-time or less than full-time.

This data including employees in defence, but they are not categorized by cantons.

The survey on persons in crafts and related activities includes and employed and owners of craft.

##### Unemployment

Data on unemployment are obtained from the Federal Employment Institute.

##### Net and gross wage

Data on average monthly paid off net and gross wages are calculated on the base of the data collected with regular Monthly survey on employee wages (Rad-1).

The survey includes legal entities of all types of ownership, government bodies, institutions and other organisations, according to the territorial organizational principle at the municipal level, that operate on the territory of the Federation of BiH, with 10 or more employees.

The survey on wages covers paid off net and gross wages of persons in payed employment, irrespective of the kind of employment and number of working hours.

It does not include wages of persons employed in the defence and persons employed in crafts and related activities.

##### Definitions

**Employed** include employees in legal entities and employees in crafts and related activities and owners of crafts and related activities.

**Employees** are persons who have signed a contract with an employer (legal entities or owners of craft and trade) for a fixed or an unspecified period of time, irrespective of the type of ownership and of whether they work full-time or less than full-time.

**Vlasnik obrta ili srodne djelatnosti** je osoba koja je vlastitim sredstvima osnovala obrt ili srodnu djelatnost, u kojoj u svoje ime i za svoj račun sama ili uz pomoć zaposlenika obavlja djelatnost.

**Godišnji prosjek broja zaposlenih** izračunava se kao aritmetička sredina mjesečnih stanja.

**Nezaposlene osobe** su osobe bez zaposlenja, sposobne za rad, starosne dobi od 15 do 65 godina, evidentirane u biroima za zapošljavanje.

**Neto plaća obuhvaća** isplaćenu plaću za obavljeni rad, kao i naknade plaća po osnovu radnog odnosa za: godišnji odmor, plaćeni dopust, državne praznike i neradne dane utvrđene zakonom, bolovanja koja idu na teret poslovnog subjekta, plaćeno odsustvo sa posla, zastoje u poslu bez krivnje zaposlenog.

**Neto plaća ne obuhvaća** ostala lična primanja kao što su: topli obrok, prevoz, regres, solidarna pomoć, jednokratna novčana pomoć i slično. Ne uključuju se ni primanja po ugovoru o povremenim i privremenim poslovima, naknade za autorska djela, otpremnine i jubilarne nagrade, ostale beneficije zaposlenih, te naknade za bolovanja koja ne idu na teret poslodavca.

**U neto plaću ne ulazi akontacija poreza na dohodak.**

**Bruto plaća obuhvaća** sve vrste neto isplata plus zakonom propisana obavezna izdvajanja iz bruto plaće (doprinosi iz bruto plaće i akontacija poreza na dohodak).

**Prosječna mjesečna isplaćena neto i bruto plaća** po zaposlenom izračunava se dijeljenjem ukupnih isplata brojem zaposlenih koji su učestvovali u isplatama.

**Nominalni indeksi neto i bruto plaća** izračunavaju se iz podataka o prosječnim mjesečnim iznosima neto i bruto plaća za odgovarajuće mjeseci i godine.

**Realni indeksi neto i bruto plaća** izračunavaju se dijeljenjem nominalnih indeksa neto i bruto plaća sa indeksom potrošačkih cijena.

**Owners of a craft or related activities** are persons who established, with their own means, a craft or related activities where they, in their own name and on their account, perform an activity, alone or with employees.

**Annual average of persons in paid employment** is calculated as an arithmetic means of monthly data.

**Unemployed persons** are persons without employment, capable of working, aged 15 to 65, registered in employment bureaus.

**Net wage includes** wage of a person in employment earned for the work done during regular working hours as well as for annual leave, paid leave, public holidays and day-offs defined by law, sickness which are paid by employer, paid absence from the work, lay-offs and job stops caused against person's will and of no fault of his own.

**Net wage does not include** other personal income, such as money for the worker's meal, worker's transport, recourse, solidarity aid and one-off financial aid, etc. Payments based on contracts for temporary and occasional jobs, author compensations, severance pays, jubilee benefits, and other benefits to employees are not covered and neither are payments for sick leave that are not paid by the employer.

**The net wage does not include advance income tax.**

**Gross wage includes** all kinds of net pays plus contributions from gross wages as prescribed by law and taxes.

**Average paid off net and gross wages** per person in employment are calculated by dividing the total of pay-offs with the number of persons who participated in that payments.

**Nominal indices of net and gross wages** are calculated from the data on average monthly net and gross wages for the respective months and year.

**Real indices of net and gross wages** are calculated by dividing nominal indices of net and gross wages with the consumer price index



<b>Područja djelatnosti KD BIH 2010</b>	<b>Sections of NACE REV.2</b>
Poljoprivreda, šumarstvo i ribolov	<b>A</b> <i>Agriculture, forestry and fishing</i>
Vađenje ruda i kamena	<b>B</b> <i>Mining and quarrying</i>
Prerađivačka industrija	<b>C</b> <i>Manufacturing</i>
Proizvodnja i snabdijevanje električnom energijom, plinom, parom i klimatizacija	<b>D</b> <i>Electricity, gas, steam and air conditioning supply</i>
Snabdijevanje vodom; uklanjanje otpadnih voda, upravljanje otpadom te djelatnosti sanacije okoliša	<b>E</b> <i>Water supply, sewerage, waste management and remediation activities</i>
Građevinarstvo	<b>F</b> <i>Construction</i>
Trgovina na veliko i na malo; popravak motornih vozila i motocikala	<b>G</b> <i>Wholesale and retail trade; repair of motor vehicles and motorcycles</i>
Prijevoz i skladištenje	<b>H</b> <i>Transportation and storage</i>
Djelatnosti pružanja smještaja te pripreme i usluživanja hrane (hotelijerstvo i ugostiteljstvo)	<b>I</b> <i>Accommodation and food service activities</i>
Informacije i komunikacije	<b>J</b> <i>Information and communication</i>
Finansijske djelatnosti i djelatnosti osiguranja	<b>K</b> <i>Financial and insurance activities</i>
Poslovanje nekretninama	<b>L</b> <i>Real estate activities</i>
Stručne, naučne i tehničke djelatnosti	<b>M</b> <i>Professional, scientific and technical activities</i>
Administrativne i pomoćne uslužne djelatnosti	<b>N</b> <i>Administrative and support service activities</i>
Javna uprava i odbrana; obavezno socijalno osiguranje	<b>O</b> <i>Public administration and defence; compulsory social security</i>
Obrazovanje	<b>P</b> <i>Education</i>
Djelatnosti zdravstvene i socijalne zaštite	<b>Q</b> <i>Human health and social work activities</i>
Umjetnost, zabava i rekreacija	<b>R</b> <i>Arts, entertainment and recreation</i>
Ostale uslužne djelatnosti	<b>S</b> <i>Other service activities</i>

**ZNAKOVI I SKRAĆENICE**

- nema pojave  
1) oznaka za napomenu  
KD BIH 2010 Klasifikacija djelatnosti  
KM konvertibilna marka

**SYMBOLS AND ABBREVIATIONS**

- no occurrence  
1) footnote  
KD BIH 2010 Classification of Activities  
KM convertible marks

# 1. ZAPOSLENI

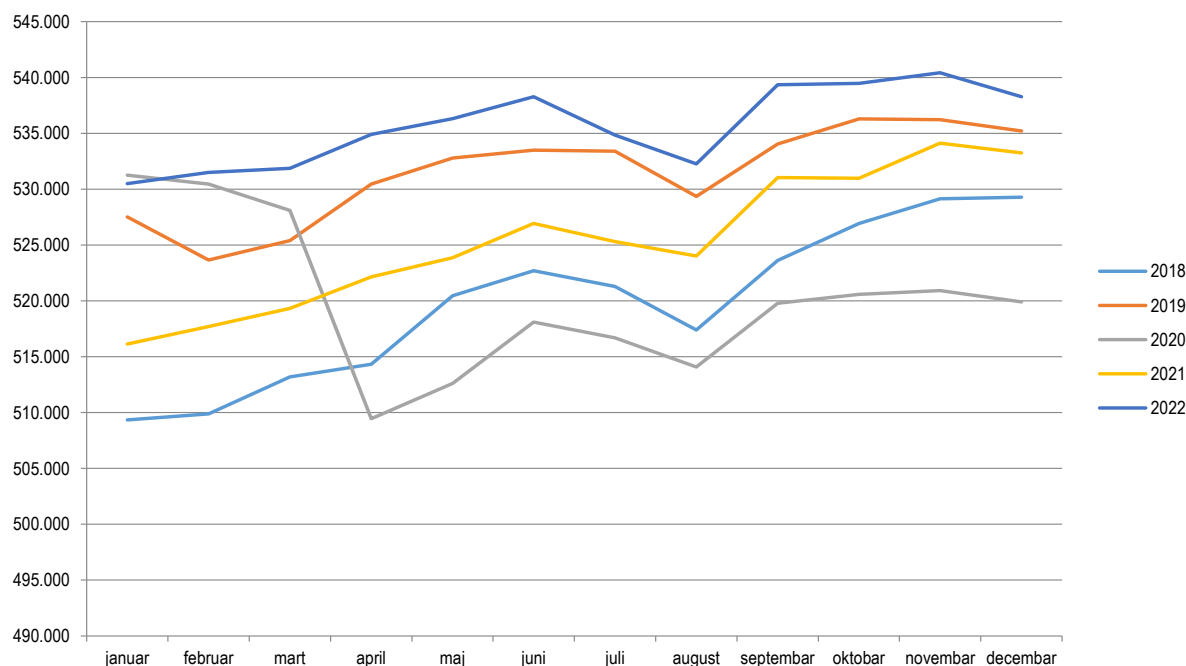
## EMPLOYED PERSONS

### 1.1. ZAPOSLENI U FEDERACIJI BiH PO MJESECIMA EMPLOYED PERSONS IN FEDERATION OF BIH BY MONTH

Mjesec	2018		2019		2020		2021		2022		Month
	ukupno total	žene women	ukupno total	žene women	ukupno total	žene women	ukupno total	žene women	ukupno total	žene women	
<b>Ukupno</b>	<b>519.800</b>	<b>215.317</b>	<b>531.483</b>	<b>222.516</b>	<b>520.162</b>	<b>218.280</b>	<b>525.397</b>	<b>222.303</b>	<b>535.665</b>	<b>232.282</b>	<b>Total</b>
januar	509.344	210.329	527.520	220.806	531.254	224.512	516.137	217.055	530.498	227.611	January
februar	509.887	211.297	523.658	218.578	530.463	224.537	517.693	218.245	531.485	228.796	February
mart	513.198	212.894	525.401	219.452	528.102	222.885	519.334	218.738	531.868	229.505	March
april	514.331	213.803	530.466	221.845	509.451	212.285	522.139	219.813	534.914	231.431	April
maj	520.452	215.531	532.779	223.015	512.627	214.667	523.852	221.029	536.325	232.351	May
juni	522.687	216.121	533.480	223.085	518.105	217.364	526.919	222.808	538.279	233.296	June
juli	521.291	214.758	533.391	222.152	516.690	215.501	525.292	221.148	534.839	230.993	July
august	517.409	212.337	529.357	219.879	514.087	213.599	524.009	220.355	532.253	229.392	August
septembar	523.626	216.812	534.031	224.038	519.772	217.821	531.024	225.722	539.334	235.483	September
oktobar	526.940	218.472	536.291	225.649	520.572	218.702	530.989	226.208	539.479	235.900	October
novembar	529.147	220.150	536.210	225.839	520.918	218.829	534.119	228.187	540.421	236.732	November
decembar	529.281	221.294	535.206	225.853	519.899	218.663	533.260	228.322	538.283	235.891	December

#### Zaposlene osobe u Federaciji BiH po mjesecima i godinama

Employed persons in Federation by month and years



# 1. ZAPOSLENI

## EMPLOYED PERSONS

### 1.2. ZAPOSLENI U FEDERACIJI BIH PO PODRUČJIMA KD BIH 2010 EMPLOYED PERSONS IN FEDERATION OF BIH BY SECTIONS KD BIH 2010

Područja	2018		2019		2020		2021		2022	
	ukupno total	žene women	ukupno total	žene women	ukupno total	žene women	ukupno total	žene women	ukupno total	žene women
<b>UKUPNO</b>	<b>519.800</b>	<b>215.317</b>	<b>531.483</b>	<b>222.516</b>	<b>520.162</b>	<b>218.280</b>	<b>525.397</b>	<b>222.303</b>	<b>535.665</b>	<b>232.282</b>
<b>A Poljoprivreda, šumarstvo i ribolov</b> <i>Agriculture, forestry and fishing</i>	10.940	2.164	10.989	2.219	10.743	2.233	10.984	2.313	11.013	2.412
<b>B Vađenje ruda i kamena</b> <i>Mining and quarrying</i>	12.995	958	13.259	944	12.671	928	12.244	976	11.489	928
<b>C Prerađivačka industrija</b> <i>Manufacturing</i>	105.098	35.599	106.385	36.793	101.729	35.472	103.541	35.957	106.439	38.023
<b>D Proizvodnja i snabdijevanje električnom energijom, plinom, parom i klimatizacija</b> <i>Electricity, gas, steam and air conditioning supply</i>	8.703	1.887	8.724	1.899	8.645	1.871	8.549	1.849	8.486	1.852
<b>E Snabdijevanje vodom; uklanjanje otpadnih voda, upravljanje otpadom te djelatnosti sanacije okoliša</b> <i>Water supply, sewerage, waste management and remediation activities</i>	8.551	1.250	8.652	1.261	8.527	1.228	8.446	1.202	8.587	1.232
<b>F Građevinarstvo</b> <i>Construction</i>	24.936	2.302	26.007	2.435	26.363	2.477	26.334	2.509	25.642	2.571
<b>G Trgovina na veliko i na malo; popravak motornih vozila i motocikala</b> <i>Wholesale and retail trade; repair of motor vehicles and motorcycles</i>	97.110	46.964	98.951	48.501	95.570	46.671	95.420	47.001	97.373	49.304
<b>H Prijevoz i skladištenje</b> <i>Transportation and storage</i>	24.062	3.920	24.857	4.078	24.419	4.024	24.423	3.997	25.000	4.129
<b>I Djelatnosti pružanja smještaja te pripreme i usluživanja hrane(hotelijerstvo i ugostiteljstvo)</b> <i>Accommodation and food service activities</i>	26.237	12.347	27.414	13.426	24.473	11.872	24.679	12.166	26.187	13.363
<b>J Informacije i komunikacije</b> <i>Information and communication</i>	14.419	5.235	15.509	5.712	16.224	6.013	17.754	6.718	19.362	7.451
<b>K Finansijske djelatnosti i djelatnosti osiguranja</b> <i>Financial and insurance activities</i>	11.920	7.382	12.115	7.509	12.070	7.541	12.034	7.578	11.852	7.538
<b>L Poslovanje nekretninama</b> <i>Real estate activities</i>	3.010	1.053	3.206	1.147	3.073	1.056	2.854	998	2.623	945
<b>M Stručne, naučne i tehničke djelatnosti</b> <i>Professional, scientific and technical activities</i>	16.291	7.416	16.593	7.673	16.594	7.699	17.264	8.165	18.265	8.847
<b>N Administrativne i pomoćne uslužne djelatnosti</b> <i>Administrative and support service activities</i>	11.205	3.356	12.068	3.967	12.464	4.253	13.197	4.666	13.709	5.217
<b>O Javna uprava i odbrana; obavezno socijalno osiguranje</b> <i>Public administration and defence; compulsory social security</i>	47.133	17.874	48.077	18.158	48.228	18.196	47.985	18.221	47.943	18.617
<b>P Obrazovanje</b> <i>Education</i>	42.797	29.060	43.436	29.751	43.113	29.783	43.400	30.282	44.234	31.257
<b>Q Djelatnosti zdravstvene i socijalne zaštite</b> <i>Human health and social work activities</i>	34.148	23.801	34.627	24.183	35.360	24.748	36.097	25.245	37.031	25.968
<b>R Umjetnost, zabava i rekreacija</b> <i>Arts, entertainment and recreation</i>	10.136	7.075	10.087	6.873	9.350	6.238	9.571	6.456	9.650	6.432
<b>S Ostale uslužne djelatnosti</b> <i>Other service activities</i>	10.109	5.674	10.527	5.987	10.546	5.977	10.621	6.004	10.780	6.196

# 1. ZAPOSLENI

## EMPLOYED PERSONS

### 1.3. ZAPOSLENI U FEDERACIJI BiH PO PODRUČJIMA I OBLASTIMA KD BiH 2010 EMPLOYED PERSONS IN FEDERATION OF BIH BY SECTIONS AND DIVISIONS KD BIH 2010

Područja i oblasti		2018	2019	2020	2021	2022	Sections and divisions
<b>UKUPNO</b>		<b>519.800</b>	<b>531.483</b>	<b>520.162</b>	<b>525.397</b>	<b>535.665</b>	<b>TOTAL</b>
<b>A</b>	<b>Poljoprivreda, šumarstvo i ribolov</b>	<b>10.940</b>	<b>10.989</b>	<b>10.743</b>	<b>10.984</b>	<b>11.013</b>	<i>Agriculture, forestry and fishing</i>
01	Biljna i stočarska proizvodnja, lovstvo i uslužne djelatnosti u vezi s njima	5.434	5.351	5.334	5.369	5.422	<i>Crop and animal production, hunting and related service activities</i>
02	Šumarstvo i sječa drva (iskorištavanje šuma)	5.333	5.461	5.224	5.419	5.382	<i>Forestry and logging</i>
03	Ribolov i akvakultura	173	177	185	196	209	<i>Fishing and aquaculture</i>
<b>B</b>	<b>Vađenje ruda i kamena</b>	<b>12.995</b>	<b>13.259</b>	<b>12.671</b>	<b>12.244</b>	<b>11.489</b>	<i>Mining and quarrying</i>
05	Vađenje ugljena i lignita	10.562	10.854	10.281	9.882	9.126	<i>Mining of coal and lignite</i>
07	Vađenje metalnih ruda	433	497	537	588	703	<i>Mining of metal ores</i>
08	Vađenje ostalih ruda i kamena	1.596	1.559	1.552	1.506	1.399	<i>Other mining and quarrying</i>
09	Pomoćne uslužne djelatnosti u vađenju ruda i kamena	404	349	301	268	261	<i>Mining support service activities</i>
<b>C</b>	<b>Prerađivačka industrija</b>	<b>105.098</b>	<b>106.385</b>	<b>101.729</b>	<b>103.541</b>	<b>106.439</b>	<i>Manufacturing</i>
10	Proizvodnja prehrambenih proizvoda	13.987	13.995	13.719	13.724	13.471	<i>Manufacture of food products</i>
11	Proizvodnja pića	1.458	1.483	1.450	1.377	1.339	<i>Manufacture of beverages</i>
12	Proizvodnja duhanskih proizvoda	261	203	162	152	46	<i>Manufacture of tobacco products</i>
13	Proizvodnja tekstila	5.646	5.209	4.609	4.469	4.284	<i>Manufacture of textiles</i>
14	Proizvodnja odjeće	10.103	10.001	9.588	9.006	9.081	<i>Manufacture of wearing apparel</i>
15	Proizvodnja kože i srodnih proizvoda	8.686	8.549	7.565	6.911	7.188	<i>Manufacture of leather and related products</i>
16	Prerada drva i proizvoda od drva i pluta, osim namještaja; proizvodnja predmeta od slame i pletarskih materijala	8.195	8.233	7.820	7.960	7.873	<i>Manufacture of wood and of products of wood and cork, except furniture; manufacture of articles of straw and plaiting materials</i>
17	Proizvodnja papira i proizvoda od papira	1.796	1.847	1.849	1.913	2.015	<i>Manufacture of paper and paper products</i>
18	Štampanje i umnožavanje snimljenih zapisa	1.672	1.713	1.636	1.567	1.496	<i>Printing and reproduction of recorded media</i>
19	Proizvodnja koksa i rafiniranih naftnih proizvoda	1.004	1.019	994	985	959	<i>Manufacture of coke and refined petroleum products</i>
20	Proizvodnja hemikalija i hemijskih proizvoda	2.998	2.984	2.775	2.868	2.876	<i>Manufacture of chemicals and chemical products</i>
21	Proizvodnja osnovnih farmaceutskih proizvoda i farmaceutskih preparata	798	804	811	769	765	<i>Manufacture of basic pharmaceutical products and pharmaceutical preparations</i>
22	Proizvodnja proizvoda od gume i plastičnih masa	5.141	5.629	5.694	5.999	6.140	<i>Manufacture of rubber and plastic products</i>
23	Proizvodnja ostalih nemetalnih mineralnih proizvoda	3.873	4.163	4.132	4.292	4.327	<i>Manufacture of other non-metallic mineral products</i>
24	Proizvodnja baznih metala	5.070	4.905	3.941	3.877	4.038	<i>Manufacture of basic metals</i>
25	Proizvodnja gotovih metalnih proizvoda, osim mašina i opreme	15.425	16.328	16.117	17.158	17.947	<i>Manufacture of fabricated metal products, except machinery and equipment</i>
26	Proizvodnja računara te elektroničkih i optičkih proizvoda	369	384	376	408	454	<i>Manufacture of computer, electronic and optical products</i>
27	Proizvodnja električne opreme	2.321	2.546	2.666	2.696	3.010	<i>Manufacture of electrical equipment</i>
28	Proizvodnja mašina i uređaja, d.n.	2.715	2.754	2.795	2.924	3.121	<i>Manufacture of machinery and equipment n.e.c.</i>
29	Proizvodnja motornih vozila, prikolica i poluprikolica	2.835	2.772	2.563	2.867	3.141	<i>Manufacture of motor vehicles, trailers and semi-trailers</i>
30	Proizvodnja ostalih prijevoznih sredstava	135	166	167	43	81	<i>Manufacture of other transport equipment</i>
31	Proizvodnja namještaja	6.939	7.122	6.778	7.700	8.460	<i>Manufacture of furniture</i>
32	Ostala prerađivačka industrija	2.247	2.125	2.153	2.355	2.527	<i>Other manufacturing</i>
33	Popravak i instaliranje mašina i opreme	1.424	1.451	1.369	1.521	1.800	<i>Repair and installation of machinery and equipment</i>
<b>D</b>	<b>Proizvodnja i snabdijevanje električnom energijom, plinom, parom i klimatizacija</b>	<b>8.703</b>	<b>8.724</b>	<b>8.645</b>	<b>8.549</b>	<b>8.486</b>	<i>Electricity, gas, steam and air conditioning supply</i>

# 1. ZAPOSLENI

## EMPLOYED PERSONS

### 1.3. ZAPOSLENI U FEDERACIJI BiH PO PODRUCJIMA I OBLASTIMA KD BiH 2010 - nastavak

#### EMPLOYED PERSONS IN FEDERATION OF BIH BY SECTIONS AND DIVISIONS KD BIH 2010 - continued

Područja i oblasti	2018	2019	2020	2021	2022	Sections and divisions
35 Proizvodnja i snabdijevanje električnom energijom, plinom, parom i klimatizacija	8.703	8.724	8.645	8.549	8.486	Electricity, gas, steam and air conditioning supply
<b>E</b> Snabdijevanje vodom; uklanjanje otpadnih voda, upravljanje otpadom te djelatnosti sanacije okoliša	<b>8.551</b>	<b>8.652</b>	<b>8.527</b>	<b>8.446</b>	<b>8.587</b>	Water supply, sewerage, waste management and remediation activities
36 Sakupljanje, pročišćavanje i snabdijevanje vodom	4.691	4.692	4.644	4.573	4.661	Water collection, treatment and supply
37 Uklanjanje otpadnih voda	170	176	167	163	152	Sewerage
38 Sakupljanje otpada, djelatnosti obrade i zbrinjavanja otpada; reciklaža materijala	3.618	3.701	3.669	3.675	3.741	Waste collection, treatment and disposal activities; materials recovery
39 Djelatnosti sanacije okoliša te ostale djelatnosti upravljanja otpadom	72	83	47	35	33	Remediation activities and other waste management services
<b>F</b> Građevinarstvo	<b>24.936</b>	<b>26.007</b>	<b>26.363</b>	<b>26.334</b>	<b>25.642</b>	Construction
41 Gradnja građevina visokogradnje	8.849	9.214	9.086	8.721	8.373	Construction of buildings
42 Gradnja građevina niskogradnje	7.301	7.624	8.097	8.321	7.971	Civil engineering
43 Specijalizirane građevinske djelatnosti	8.786	9.169	9.180	9.292	9.298	Specialised construction activities
<b>G</b> Trgovina na veliko i na malo; popravak motornih vozila i motocikala	<b>97.110</b>	<b>98.951</b>	<b>95.570</b>	<b>95.420</b>	<b>97.373</b>	Wholesale and retail trade; repair of motor vehicles and motorcycles
45 Trgovina na veliko i na malo motornim vozilima i motociklima; popravak motornih vozila i motocikala	8.057	8.583	8.713	8.920	9.015	Wholesale and retail trade and repair of motor vehicles and motorcycles
46 Trgovina na veliko, osim trgovine motornim vozilima i motociklima	26.488	26.964	26.427	26.230	26.644	Wholesale trade, except of motor vehicles and motorcycles
47 Trgovina na malo, osim trgovine motornim vozilima i motociklima	62.565	63.404	60.430	60.270	61.714	Retail trade, except of motor vehicles and motorcycles
<b>H</b> Prijevoz i skladištenje	<b>24.062</b>	<b>24.857</b>	<b>24.419</b>	<b>24.423</b>	<b>25.000</b>	Transportation and storage
49 Kopneni prijevoz i cjevovodni transport	15.951	16.127	15.487	15.257	15.409	Land transport and transport via pipelines
50 Vodeni prijevoz	2	-	-	1	1	
51 Zračni prijevoz	33	57	37	21	18	Air transport
52 Skladištenje i pomoćne djelatnosti u prijevozu	4.852	5.104	5.214	5.327	5.601	Warehousing and support activities for transportation
53 Poštanske i kurirske djelatnosti	3.224	3.569	3.681	3.817	3.971	Postal and courier activities
<b>I</b> Djelatnosti pružanja smještaja te pripreme i usluživanja hrane (hotelijerstvo i ugostiteljstvo)	<b>26.237</b>	<b>27.414</b>	<b>24.473</b>	<b>24.679</b>	<b>26.187</b>	Accommodation and food service activities
55 Smeštaj	4.842	4.976	3.811	3.780	4.371	Accommodation
56 Djelatnosti pripreme i usluživanja hrane i pića	21.395	22.438	20.662	20.899	21.816	Food and beverage service activities
<b>J</b> Informacije i komunikacije	<b>14.419</b>	<b>15.509</b>	<b>16.224</b>	<b>17.754</b>	<b>19.362</b>	Information and communication
58 Izdavačke djelatnosti	740	734	662	598	568	Publishing activities
59 Proizvodnja filmova, videofilmova i televizijskog programa, djelatnosti snimanja zvučnih zapisa i izdavanja muzičkih zapisa	297	342	313	293	309	Motion picture, video and television programme production, sound recording
60 Emitiranje programa	2.753	2.766	2.779	2.791	2.761	Programming and broadcasting activities
61 Telekomunikacije	4.982	4.976	4.904	4.873	4.752	Telecommunications
62 Računarsko programiranje, savjetovanje i djelatnosti u vezi s njima	4.348	5.122	5.775	6.762	8.207	Computer programming, consultancy and related activities
63 Informacijske uslužne djelatnosti	1.299	1.569	1.791	2.437	2.765	Information service activities
<b>K</b> Finansijske djelatnosti i djelatnosti osiguranja	<b>11.920</b>	<b>12.115</b>	<b>12.070</b>	<b>12.034</b>	<b>11.852</b>	Financial and insurance activities
64 Finansijske uslužne djelatnosti, osim osiguranja i penzijskih fondova	8.200	8.213	8.101	7.994	7.931	Financial service activities, except insurance and pension funding

# 1. ZAPOSLENI

## EMPLOYED PERSONS

### 1.3. ZAPOSLENI U FEDERACIJI BiH PO PODRUČJIMA I OBLASTIMA KD BiH 2010 - nastavak

#### EMPLOYED PERSONS BY SECTIONS AND DIVISIONS KD BIH 2010 - continued

Područja i oblasti	2018	2019	2020	2021	2022	Sections and divisions
65 Osiguranje, reosiguranje i penzijski fondovi, osim obaveznog socijalnog osiguranja	2.883	2.973	3.008	3.044	3.044	Insurance, reinsurance and pension funding, except compulsory social security
66 Pomoćne djelatnosti kod finansijskih usluga i djelatnosti osiguranja	837	929	961	996	877	Activities auxiliary to financial services and insurance activities
<b>L</b> Poslovanje nekretninama	<b>3.010</b>	<b>3.206</b>	<b>3.073</b>	<b>2.854</b>	<b>2.623</b>	Real estate activities
68 Poslovanje nekretninama	3.010	3.206	3.073	2.854	2.623	Real estate activities
<b>M</b> Stručne, naučne i tehničke djelatnosti	<b>16.291</b>	<b>16.593</b>	<b>16.594</b>	<b>17.264</b>	<b>18.265</b>	Professional, scientific and technical
69 Pravne i računovodstvene djelatnosti	5.151	5.269	5.283	5.463	5.783	Legal and accounting activities
70 Upravljačke djelatnosti; savjetovanje u vezi s upravljanjem	1.137	1.142	1.131	1.272	1.369	Activities of head offices; management consultancy activities
71 Arhitektonske i inženjerske djelatnosti; tehničko ispitivanje i analiza	5.712	5.786	5.830	5.833	6.083	Architectural and engineering activities; technical testing and analysis
72 Naučno istraživanje i razvoj	427	425	417	411	440	Scientific research and development
73 Promocija (reklama i propaganda) i istraživanje tržišta	2.584	2.632	2.597	2.885	3.107	Advertising and market research
74 Ostale stručne, naučne i tehničke djelatnosti	584	640	668	718	814	Other professional, scientific and technical activities
75 Veterinarske djelatnosti	696	699	668	682	669	Veterinary activities
<b>N</b> Administrativne i pomoćne uslužne djelatnosti	<b>11.205</b>	<b>12.068</b>	<b>12.464</b>	<b>13.197</b>	<b>13.709</b>	Administrative and support service activities
77 Djelatnosti iznajmljivanja i davanja u zakup (leasing)	701	811	721	639	692	Rental and leasing activities
78 Djelatnosti posredovanja u zapošljavanju	1.791	1.788	1.775	1.898	2.048	Employment activities
79 Putničke agencije, organizatori putovanja, turoperatori i ostale rezervacijske usluge te djelatnosti u vezi s njima	826	920	783	646	705	Travel agency, tour operator reservation service and related activities
80 Zaštitne i istražne djelatnosti	4.487	4.501	4.524	4.462	4.168	Security and investigation activities
81 Usluge u vezi s upravljanjem i održavanjem zgrada te djelatnosti uređenja i održavanja zelenih površina	1.671	1.744	1.868	1.935	1.938	Services to buildings and landscape activities
82 Kancelarijske administrativne i pomoćne djelatnosti te ostale poslovne pomoćne djelatnosti	1.729	2.304	2.793	3.617	4.158	Office administrative, office support and other business support activities
<b>O</b> Javna uprava i odbrana; obavezno socijalno osiguranje	<b>47.133</b>	<b>48.077</b>	<b>48.228</b>	<b>47.985</b>	<b>47.943</b>	Public administration and defence; compulsory social security
84 Javna uprava i odbrana; obavezno socijalno osiguranje	47.133	48.077	48.228	47.985	47.943	Public administration and defence; compulsory social security
<b>P</b> Obrazovanje	<b>42.797</b>	<b>43.436</b>	<b>43.113</b>	<b>43.400</b>	<b>44.234</b>	Education
85 Obrazovanje	42.797	43.436	43.113	43.400	44.234	Education
<b>Q</b> Djelatnosti zdravstvene i socijalne zaštite	<b>34.148</b>	<b>34.627</b>	<b>35.360</b>	<b>36.097</b>	<b>37.031</b>	Human health and social work activities
86 Djelatnosti zdravstvene zaštite	29.034	29.302	29.826	30.494	31.008	Human health activities
87 Djelatnosti socijalne zaštite u ustanovama sa smještajem	2.508	2.649	2.842	2.857	3.009	Residential care activities
88 Djelatnosti socijalne zaštite bez smještaja	2.606	2.676	2.692	2.746	3.014	Social work activities without accommodation
<b>R</b> Umjetnost, zabava i rekreacija	<b>10.136</b>	<b>10.087</b>	<b>9.350</b>	<b>9.571</b>	<b>9.650</b>	Arts, entertainment and recreation
90 Kreativne, umjetničke i zabavne djelatnosti	1.098	1.125	1.141	1.136	1.165	Creative, arts and entertainment activities
91 Biblioteke, arhivi, muzeji i ostale kulturne djelatnosti	772	797	765	753	803	Libraries, archives, museums and other cultural activities
92 Djelatnosti kockanja i klađenja	6.409	6.105	5.505	5.739	5.656	Gambling and betting activities
93 Sportske, zabavne i rekreacijske djelatnosti	1.857	2.060	1.939	1.943	2.026	Sports activities and amusement and recreation activities
<b>S</b> Ostale uslužne djelatnosti	<b>10.109</b>	<b>10.527</b>	<b>10.546</b>	<b>10.621</b>	<b>10.780</b>	Other service activities
94 Djelatnosti članskih organizacija	4.360	4.549	4.559	4.555	4.553	Activities of membership organisations
95 Popravak računara i predmeta za ličnu upotrebu i domaćinstvo	825	823	812	779	782	Repair of computers and personal and household goods
96 Ostale lične uslužne djelatnosti	4.924	5.155	5.175	5.287	5.445	Other personal service activities

## 2. NEZAPOSLENI

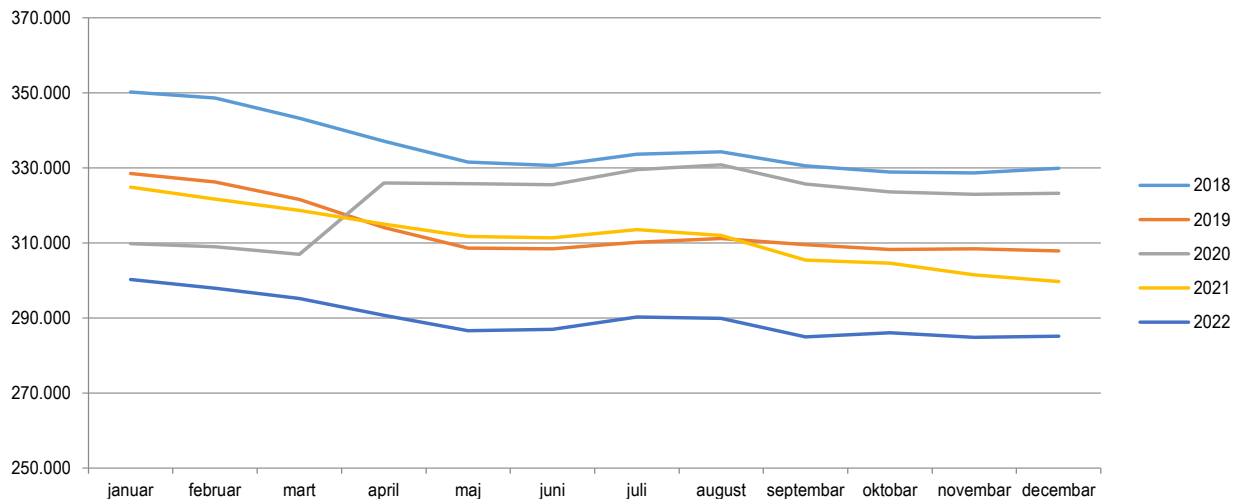
### UNEMPLOYED PERSONS

#### 2.1. NEZAPOSLENI U FEDERACIJI BIH PO MJESECIMA UNEMPLOYED PERSONS IN FEDERATION OF BIH BY MONTH

Mjesec	2018		2019		2020		2021		2022		Month
	ukupno total	žene women	ukupno total	žene women	ukupno total	žene women	ukupno total	žene women	ukupno total	žene women	
januar	350.217	194.288	328.503	187.847	309.816	179.953	324.862	188.862	300.255	175.999	January
februar	348.639	193.574	326.266	186.798	309.004	179.394	321.668	187.059	297.923	174.524	February
mart	343.207	191.703	321.618	184.884	306.963	178.565	318.648	185.868	295.220	173.232	March
april	337.127	189.789	314.069	181.891	325.989	190.162	315.019	184.434	290.750	171.007	April
maj	331.519	187.823	308.607	179.425	325.816	189.445	311.752	182.789	286.644	169.242	May
juni	330.647	187.859	308.443	179.705	325.540	192.448	311.389	182.070	286.987	169.411	June
juli	333.610	190.249	310.185	181.650	329.581	191.736	313.574	183.753	290.231	171.601	July
august	334.315	191.153	311.150	182.500	330.809	192.679	312.018	183.130	289.905	171.543	August
septembar	330.579	188.583	309.493	180.421	325.660	189.323	305.395	178.699	284.988	167.972	September
oktobar	328.895	188.192	308.214	179.617	323.566	188.305	304.592	178.383	286.043	168.882	October
novembar	328.663	188.205	308.433	179.862	322.978	188.198	301.513	176.884	284.842	168.423	November
decembar	329.907	188.503	307.864	179.336	323.244	188.169	299.717	175.866	285.158	168.618	December

#### Nezaposlene osobe u Federaciji BiH po mjesecima i godinama

Unemployed persons in Federation by month and years



Izvor: Federalni zavod za zapošljavanje

Source: Federal Employment Institute

## 2. NEZAPOSLENI

### UNEMPLOYED PERSONS

#### 2.2. NEZAPOSLENI U FEDERACIJI BiH PREMA STEPENU STRUČNOG OBRAZOVANJA, stanje decembar/prosinac UNEMPLOYED PERSONS IN FEDERATION OF BIH BY LEVEL OF PROFESSIONAL EDUCATION, situation December

Godina/Year	ukupno total	žene women	Stepen stručnog obrazovanja Level of professional education							
			V S S University	VŠS Higher	SSS Secondary	NSS Elementary	VKV Highly skilled	KV Skilled	PKV Semi- skilled	NKV Unskilled
2018	329.907	188.503	24.474	5.393	90.116	507	1.249	104.944	5.818	97.406
2019	307.864	179.336	22.632	5.495	84.281	432	1.060	96.917	5.198	91.849
2020	323.244	188.169	25.574	5.983	90.339	420	985	102.115	5.004	92.824
2021	299.717	175.866	23.361	5.779	83.267	359	823	94.347	4.470	87.311
2022	285.158	168.618	21.222	5.099	78.713	329	703	89.929	4.136	85.027

#### 2.3. NEZAPOSLENI U FEDERACIJI BiH PREMA INTERVALIMA STAROSTI, stanje decembar/prosinac UNEMPLOYED PERSONS IN FEDERATION OF BIH BY AGE GROUPS, situation December

Godina/Year	ukupno total	žene women	Starosne grupe Age groups									
			15-19	20-24	25-29	30-34	35-39	40-44	45-49	50-54	55-59	60 i više 60 and over
2018	329.907	188.503	10.198	41.625	36.649	36.035	36.627	35.594	36.230	37.530	34.817	24.602
2019	307.864	179.336	9.032	37.252	31.383	32.155	33.662	33.149	33.799	36.117	35.243	26.072
2020	323.244	188.169	9.250	38.137	35.423	33.261	34.865	34.546	35.415	36.390	37.074	28.883
2021	299.717	175.866	6.980	31.365	32.991	29.561	31.643	31.878	33.061	34.782	36.315	31.141
2022	285.158	168.618	5.760	24.364	31.503	27.828	30.051	30.327	31.499	34.192	35.822	33.812

Izvor: Federalni zavod za zapošljavanje  
Source: Federal Employment Institute



### 3. PLAĆE WAGES

#### 3.1. NETO PLAĆE U FEDERACIJI BIH PO MJESECIMA NET WAGES IN FEDERATION OF BIH BY MONTHS

KM

Mjesec	2018	2019	2020	2021	2022	Month
Godišnji prosjek	<b>889</b>	<b>928</b>	<b>956</b>	<b>996</b>	<b>1.114</b>	Annual average
januar	888	924	958	974	1.045	January
februar	852	895	934	951	1.046	February
mart	881	916	947	996	1.096	March
april	872	926	940	990	1.080	April
maj	896	938	935	982	1.110	May
juni	881	911	953	999	1.115	June
juli	891	940	971	995	1.122	July
august	904	932	949	1.000	1.138	August
septembar	875	919	961	998	1.140	September
oktobar	899	942	961	999	1.139	October
novembar	907	932	966	1.022	1.161	November
decembar	914	958	993	1.046	1.180	December

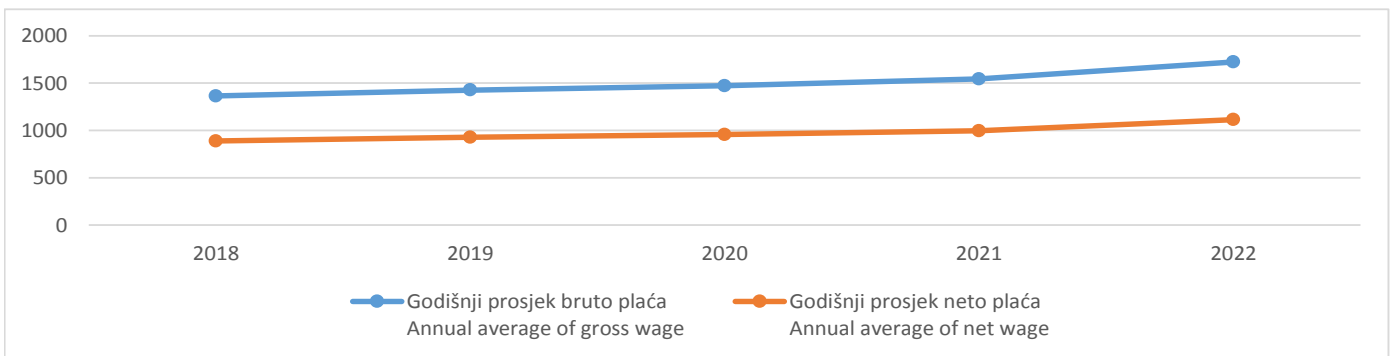
#### 3.2. BRUTO PLAĆE U FEDERACIJI BIH PO MJESECIMA GROSS WAGES IN FEDERATION OF BIH BY MONTHS

KM

Mjesec	2018	2019	2020	2021	2022	Month
Godišnji prosjek	<b>1.365</b>	<b>1.427</b>	<b>1.472</b>	<b>1.543</b>	<b>1.724</b>	Annual average
januar	1.363	1.422	1.477	1.511	1.614	January
februar	1.306	1.372	1.436	1.473	1.614	February
mart	1.353	1.407	1.457	1.548	1.694	March
april	1.338	1.423	1.446	1.534	1.667	April
maj	1.378	1.443	1.438	1.518	1.714	May
juni	1.353	1.400	1.469	1.546	1.723	June
juli	1.368	1.447	1.498	1.541	1.735	July
august	1.389	1.434	1.462	1.548	1.761	August
septembar	1.344	1.415	1.480	1.543	1.766	September
oktobar	1.383	1.451	1.481	1.546	1.766	October
novembar	1.395	1.436	1.489	1.583	1.800	November
decembar	1.405	1.475	1.532	1.616	1.831	December

#### Godišnji prosjek neto i bruto plaća u KM

Annual average of net and gross wage in KM



3. PLAĆE  
WAGES

3.3. NETO PLAĆE U FEDERACIJI BIH PO PODRUČJIMA KD BIH 2010 I MJESECIMA  
NET WAGES IN FEDERATION OF BIH BY SECTIONS KD BIH 2010 AND MONTHS

KM

Mjesec Month	Ukupno Total	Područja/Sections																		
		A	B	C	D	E	F	G	H	I	J	K	L	M	N	O	P	Q	R	S
2018	<b>889</b>	<b>858</b>	<b>1.007</b>	<b>646</b>	<b>1.640</b>	<b>894</b>	<b>586</b>	<b>649</b>	<b>879</b>	<b>536</b>	<b>1.309</b>	<b>1.508</b>	<b>770</b>	<b>1.060</b>	<b>609</b>	<b>1.275</b>	<b>897</b>	<b>1.196</b>	<b>649</b>	<b>1.025</b>
I	<b>888</b>	873	1.000	649	1.698	899	576	649	885	536	1.315	1.459	767	1.077	600	1.268	868	1.194	676	1.001
II	<b>852</b>	804	998	609	1.532	867	567	625	840	528	1.238	1.436	757	1.038	599	1.268	874	1.077	629	1.007
III	<b>881</b>	848	1.010	632	1.641	890	576	650	871	531	1.302	1.508	840	1.037	592	1.277	888	1.173	639	1.002
IV	<b>872</b>	815	999	629	1.587	876	572	642	879	532	1.282	1.538	786	1.076	598	1.270	882	1.128	635	997
V	<b>896</b>	880	1.020	654	1.693	903	594	674	889	535	1.344	1.503	753	1.044	602	1.276	888	1.196	651	1.015
VI	<b>881</b>	819	993	646	1.582	882	592	638	868	531	1.317	1.656	756	1.034	609	1.272	890	1.150	640	1.020
VII	<b>891</b>	875	1.003	651	1.650	960	590	645	883	538	1.322	1.488	761	1.078	604	1.280	902	1.213	644	1.022
VIII	<b>904</b>	898	1.022	655	1.697	916	591	650	899	547	1.340	1.540	772	1.077	610	1.280	915	1.266	660	1.017
IX	<b>875</b>	872	999	636	1.557	884	579	633	865	533	1.286	1.448	765	1.046	620	1.273	906	1.161	634	1.046
X	<b>899</b>	850	1.005	657	1.694	910	592	653	887	536	1.324	1.435	768	1.057	617	1.280	913	1.254	647	1.060
XI	<b>907</b>	882	1.023	664	1.664	907	608	663	890	543	1.319	1.468	754	1.073	624	1.276	918	1.281	656	1.041
XII	<b>914</b>	878	1.015	672	1.686	902	597	664	891	541	1.314	1.613	761	1.078	632	1.285	923	1.257	677	1.068
2019	<b>928</b>	<b>899</b>	<b>1.015</b>	<b>677</b>	<b>1.691</b>	<b>917</b>	<b>630</b>	<b>694</b>	<b>894</b>	<b>545</b>	<b>1.363</b>	<b>1.652</b>	<b>839</b>	<b>1.075</b>	<b>613</b>	<b>1.323</b>	<b>954</b>	<b>1.284</b>	<b>732</b>	<b>1.064</b>
I	<b>924</b>	877	1.037	681	1.786	931	619	684	893	545	1.376	1.622	821	1.061	605	1.299	927	1.315	725	1.032
II	<b>895</b>	851	992	646	1.604	888	597	678	856	532	1.295	1.585	872	1.045	602	1.306	937	1.198	713	1.050
III	<b>916</b>	889	1.004	661	1.671	898	617	707	896	533	1.291	1.635	828	1.071	600	1.320	962	1.243	706	1.062
IV	<b>926</b>	900	1.015	675	1.703	903	618	698	902	538	1.360	1.740	817	1.082	615	1.317	952	1.283	704	990
V	<b>938</b>	912	1.045	689	1.745	931	632	695	904	544	1.377	1.686	840	1.091	615	1.322	949	1.333	715	1.055
VI	<b>911</b>	834	997	669	1.624	889	613	677	879	538	1.314	1.706	830	1.064	615	1.320	952	1.209	719	1.047
VII	<b>940</b>	940	1.032	690	1.753	936	646	698	898	546	1.392	1.680	860	1.071	609	1.325	955	1.326	739	1.064
VIII	<b>932</b>	941	1.026	674	1.706	932	636	691	891	553	1.394	1.605	826	1.096	614	1.324	966	1.293	734	1.055
IX	<b>919</b>	927	983	662	1.647	908	628	685	879	550	1.367	1.580	834	1.066	617	1.332	955	1.253	749	1.074
X	<b>942</b>	929	1.019	687	1.733	935	653	696	902	560	1.407	1.599	853	1.079	618	1.328	963	1.337	751	1.097
XI	<b>932</b>	876	1.006	684	1.633	921	645	696	908	550	1.372	1.579	832	1.073	622	1.332	963	1.275	753	1.117
XII	<b>958</b>	903	1.025	703	1.692	930	652	717	916	549	1.405	1.801	852	1.107	619	1.345	966	1.342	773	1.135
2020	<b>956</b>	<b>912</b>	<b>1.054</b>	<b>693</b>	<b>1.691</b>	<b>931</b>	<b>657</b>	<b>712</b>	<b>888</b>	<b>521</b>	<b>1.399</b>	<b>1.655</b>	<b>805</b>	<b>1.054</b>	<b>627</b>	<b>1.356</b>	<b>982</b>	<b>1.335</b>	<b>720</b>	<b>1.092</b>
I	<b>958</b>	953	1.065	698	1.770	959	668	716	938	565	1.373	1.642	904	1.074	628	1.347	962	1.375	782	1.075
II	<b>934</b>	884	985	681	1.613	914	657	705	904	555	1.366	1.597	896	1.056	613	1.354	970	1.251	768	1.078
III	<b>947</b>	850	1.072	689	1.698	922	632	718	874	511	1.369	1.640	874	1.040	625	1.362	973	1.333	731	1.063
IV	<b>940</b>	840	1.057	672	1.693	920	641	688	868	493	1.376	1.601	780	1.030	619	1.361	976	1.313	712	1.027
V	<b>935</b>	872	1.064	668	1.667	921	633	690	843	477	1.353	1.610	747	1.020	620	1.350	965	1.298	664	1.044
VI	<b>953</b>	912	1.068	679	1.694	930	639	716	882	506	1.405	1.666	753	1.043	621	1.343	989	1.332	701	1.081
VII	<b>971</b>	1.011	1.062	707	1.755	948	659	715	884	533	1.438	1.668	780	1.048	635	1.352	1.009	1.378	706	1.078
VIII	<b>949</b>	891	1.052	681	1.650	920	666	706	876	514	1.387	1.686	775	1.051	622	1.352	995	1.302	702	1.088
IX	<b>961</b>	945	1.055	694	1.687	932	668	714	887	521	1.405	1.736	784	1.057	632	1.354	977	1.343	706	1.144
X	<b>961</b>	924	1.053	701	1.694	931	669	719	896	521	1.376	1.630	777	1.072	637	1.357	977	1.354	711	1.123
XI	<b>966</b>	889	1.038	719	1.626	920	666	721	889	516	1.440	1.661	787	1.059	625	1.372	983	1.319	723	1.123
XII	<b>993</b>	968	1.082	727	1.744	959	684	736	916	526	1.490	1.729	784	1.094	649	1.370	1.009	1.423	723	1.185
2021	<b>996</b>	<b>934</b>	<b>1.076</b>	<b>742</b>	<b>1.718</b>	<b>948</b>	<b>696</b>	<b>738</b>	<b>913</b>	<b>550</b>	<b>1.479</b>	<b>1.710</b>	<b>856</b>	<b>1.125</b>	<b>680</b>	<b>1.384</b>	<b>1.013</b>	<b>1.389</b>	<b>714</b>	<b>1.129</b>
I	<b>974</b>	904	1.077	727	1.681	932	668	718	860	524	1.447	1.638	800	1.109	636	1.373	986	1.355	710	1.088
II	<b>951</b>	866	1.012	695	1.598	907	661	716	866	524	1.401	1.634	805	1.060	623	1.370	986	1.298	684	1.118
III	<b>996</b>	972	1.077	741	1.763	948	688	733	917	527	1.495	1.645	855	1.135	645	1.388	991	1.431	706	1.125
IV	<b>990</b>	947	1.065	728	1.724	937	676	738	903	523	1.502	1.705	839	1.125	631	1.376	1.006	1.395	691	1.116
V	<b>982</b>	919	1.068	727	1.679	937	678	729	905	538	1.453	1.607	806	1.088	643	1.385	1.013	1.352	703	1.094
VI	<b>999</b>	947	1.067	737	1.711	942	696	739	930	536	1.468	1.895	819	1.115	652	1.378	1.013	1.387	709	1.118
VII	<b>995</b>	904	1.089	745	1.743	958	694	733	918	554	1.491	1.716	860	1.132	668	1.381	1.008	1.372	729	1.125
VIII	<b>1.000</b>	926	1.088	738	1.730	958	695	733	921	561	1.473	1.695	840	1.147	720	1.389	1.049	1.393	716	1.140
IX	<b>998</b>	938	1.081	748	1.712	958	708	736	909	567	1.482	1.662	906	1.120	721	1.376	1.012	1.408	717	1.203
X	<b>999</b>	920	1.084	752	1.668	941	721	736	924	574	1.467	1.696	910	1.133	717	1.389	1.025	1.377	731	1.159
XI	<b>1.022</b>	995	1.085	778	1.758	973	722	762	951	582	1.489	1.670	912	1.135	732	1.395	1.035	1.424	732	1.084
XII	<b>1.046</b>	963	1.116	787	1.835	993	741	782	944	576	1.566	1.964	950	1.195	742	1.412	1.032	1.482	737	1.160
2022	<b>1.114</b>	<b>1.019</b>	<b>1.245</b>	<b>859</b>	<b>1.830</b>	<b>1.034</b>	<b>808</b>	<b>861</b>	<b>1.047</b>	<b>671</b>	<b>1.628</b>	<b>1.769</b>	<b>1.035</b>	<b>1.293</b>	<b>904</b>	<b>1.504</b>	<b>1.120</b>	<b>1.490</b>	<b>858</b>	<b>1.259</b>
I	<b>1.045</b>	931	1.124	813	1.731	979	765	805	977	636	1.467	1.679	990	1.216	772	1.422	1.052	1.412	846	1.220
II	<b>1.046</b>	965	1.088	812	1.651	976	760	821	979	652	1.537	1.708	991	1.231	815	1.437	1.062	1.349	830	1.218
III	<b>1.096</b>	1.054	1.169	853	1.874	1.040	790	848	1.029	654	1.602	1.717	1.028	1.238	850	1.470	1.079	1.491	834	1.237
IV	<b>1.080</b>	1.009	1.161	847	1.759	1.008	778	853	1.008	664	1.586	1.762	1.058	1.244	846	1.469	1.090	1.387	832	1.237
V	<b>1.110</b>	1.005	1.271	856	1.856	1.044	804	871	1.080	674	1.624	1.777	1.036	1.278	906	1.483	1.101	1.455	846	1.245
VI	<b>1.115</b>	1.039	1.281	853	1.847	1.050	815	874	1.046	672	1.658	1.925	1.030	1.271	912	1.477	1.123	1.451	848	1.247
VII	<b>1.122</b>	993	1.290	848	1.781	1.044	811	853	1.057	676	1.632	1.770	1.036	1.316	910	1.525	1.134	1.571	852	1.244
VIII	<b>1.138</b>	1.060	1.333	871	1.920	1.072														

3. PLAĆE  
WAGES

3.4. BRUTO PLAĆE U FEDERACIJI BIH PO PODRUČJIMA KD BIH 2010 I MJESECIMA  
GROSS WAGES IN FEDERATION BIH BY SECTIONS KD BIH 2010 AND MONTHS

KM

Mjesec Month	Ukupno Total	Područja/Sections																		
		A	B	C	D	E	F	G	H	I	J	K	L	M	N	O	P	Q	R	S
2018	1.365	1.303	1.544	973	2.558	1.362	883	987	1.344	809	2.042	2.364	1.179	1.649	927	1.978	1.383	1.858	990	1.576
I	1.363	1.330	1.533	978	2.650	1.369	865	988	1.352	809	2.052	2.281	1.174	1.673	912	1.965	1.336	1.854	1.031	1.538
II	1.306	1.214	1.520	913	2.383	1.318	852	948	1.283	795	1.929	2.247	1.158	1.613	911	1.965	1.345	1.666	957	1.548
III	1.353	1.286	1.549	950	2.559	1.354	866	989	1.333	801	2.033	2.362	1.291	1.619	899	1.980	1.367	1.820	973	1.539
IV	1.338	1.234	1.532	945	2.472	1.334	860	977	1.344	802	1.997	2.411	1.205	1.682	909	1.968	1.359	1.747	968	1.531
V	1.378	1.337	1.565	986	2.644	1.375	895	1.027	1.360	807	2.101	2.354	1.152	1.628	915	1.979	1.368	1.868	993	1.560
VI	1.353	1.241	1.524	975	2.464	1.342	892	970	1.326	801	2.054	2.601	1.157	1.607	930	1.972	1.371	1.782	976	1.567
VII	1.368	1.330	1.538	981	2.574	1.353	889	981	1.354	813	2.062	2.330	1.165	1.675	920	1.984	1.389	1.883	982	1.571
VIII	1.389	1.366	1.568	987	2.648	1.397	890	989	1.377	826	2.091	2.414	1.183	1.673	929	1.985	1.410	1.968	1.009	1.562
IX	1.344	1.326	1.532	957	2.423	1.347	873	962	1.322	805	2.005	2.269	1.171	1.625	943	1.975	1.397	1.800	969	1.610
X	1.383	1.291	1.542	991	2.644	1.387	892	994	1.358	811	2.069	2.264	1.175	1.644	940	1.985	1.412	1.952	988	1.634
XI	1.395	1.343	1.572	1.002	2.598	1.383	917	1.009	1.362	820	2.061	2.297	1.155	1.669	950	1.979	1.416	1.994	1.003	1.602
XII	1.405	1.337	1.560	1.015	2.633	1.376	899	1.012	1.363	818	2.053	2.534	1.167	1.675	964	1.994	1.425	1.956	1.035	1.645
2019	1.427	1.369	1.561	1.022	2.642	1.400	951	1.054	1.369	824	2.131	2.593	1.293	1.675	934	2.054	1.475	1.998	1.123	1.648
I	1.422	1.333	1.592	1.029	2.793	1.422	934	1.043	1.368	824	2.150	2.547	1.263	1.651	921	2.009	1.432	2.054	1.113	1.587
II	1.372	1.292	1.520	973	2.499	1.353	899	1.018	1.308	802	2.022	2.484	1.345	1.624	917	2.027	1.447	1.861	1.093	1.615
III	1.407	1.359	1.540	999	2.609	1.369	931	1.064	1.372	806	2.025	2.563	1.276	1.667	915	2.049	1.487	1.933	1.080	1.635
IV	1.423	1.367	1.571	1.020	2.660	1.381	932	1.050	1.383	813	2.126	2.733	1.257	1.687	937	2.044	1.471	1.997	1.077	1.622
V	1.443	1.389	1.616	1.042	2.727	1.421	955	1.061	1.386	823	2.149	2.647	1.294	1.689	937	2.053	1.467	2.077	1.095	1.624
VI	1.400	1.266	1.529	1.009	2.534	1.355	922	1.032	1.345	813	2.051	2.679	1.279	1.660	938	2.049	1.471	1.878	1.100	1.611
VII	1.447	1.435	1.584	1.043	2.741	1.433	977	1.065	1.376	828	2.176	2.643	1.328	1.672	928	2.056	1.476	2.066	1.136	1.639
VIII	1.434	1.437	1.575	1.019	2.666	1.425	962	1.053	1.364	837	2.180	2.521	1.272	1.709	935	2.057	1.493	2.013	1.127	1.623
IX	1.415	1.415	1.507	1.000	2.571	1.385	951	1.045	1.346	832	2.139	2.475	1.286	1.659	941	2.071	1.482	1.950	1.152	1.655
X	1.451	1.418	1.574	1.039	2.710	1.430	988	1.061	1.383	848	2.202	2.506	1.316	1.681	942	2.065	1.489	2.083	1.157	1.692
XI	1.436	1.330	1.552	1.035	2.548	1.407	976	1.063	1.393	833	2.146	2.473	1.282	1.671	949	2.072	1.491	1.985	1.159	1.724
XII	1.475	1.377	1.575	1.063	2.642	1.425	986	1.096	1.405	832	2.200	2.836	1.319	1.726	944	2.090	1.495	2.083	1.191	1.752
2020	1.472	1.389	1.623	1.046	2.641	1.422	994	1.087	1.360	788	2.191	2.602	1.241	1.641	957	2.108	1.518	2.086	1.103	1.683
I	1.477	1.455	1.637	1.056	2.767	1.466	1.013	1.094	1.434	853	2.147	2.596	1.399	1.671	958	2.091	1.486	2.150	1.205	1.655
II	1.436	1.345	1.510	1.027	2.515	1.388	994	1.076	1.381	841	2.136	2.507	1.385	1.643	934	2.103	1.499	1.949	1.182	1.660
III	1.457	1.292	1.649	1.036	2.652	1.408	952	1.097	1.336	755	2.141	2.578	1.340	1.618	954	2.113	1.503	2.082	1.123	1.637
IV	1.446	1.276	1.634	1.007	2.644	1.405	968	1.048	1.323	744	2.154	2.514	1.200	1.599	944	2.114	1.508	2.049	1.090	1.581
V	1.438	1.324	1.646	1.003	2.603	1.407	955	1.050	1.285	719	2.115	2.527	1.148	1.583	949	2.098	1.493	2.025	1.019	1.606
VI	1.469	1.389	1.635	1.025	2.645	1.420	967	1.090	1.348	762	2.209	2.617	1.155	1.622	948	2.088	1.530	2.082	1.073	1.664
VII	1.498	1.549	1.644	1.070	2.744	1.449	997	1.092	1.356	806	2.253	2.625	1.208	1.635	970	2.103	1.561	2.155	1.081	1.661
VIII	1.462	1.357	1.621	1.027	2.575	1.405	1.010	1.078	1.343	776	2.170	2.648	1.194	1.637	947	2.103	1.538	2.033	1.074	1.673
IX	1.480	1.442	1.626	1.047	2.635	1.424	1.013	1.091	1.360	786	2.200	2.731	1.207	1.647	963	2.106	1.511	2.099	1.080	1.767
X	1.481	1.409	1.623	1.060	2.646	1.423	1.015	1.096	1.374	785	2.154	2.559	1.195	1.671	968	2.111	1.513	2.117	1.088	1.731
XI	1.489	1.356	1.600	1.089	2.537	1.405	1.008	1.100	1.364	778	2.257	2.615	1.214	1.651	954	2.136	1.521	2.064	1.106	1.733
XII	1.532	1.481	1.659	1.101	2.727	1.466	1.038	1.126	1.406	794	2.340	2.721	1.210	1.710	990	2.131	1.556	2.223	1.106	1.834
2021	1.543	1.444	1.653	1.126	2.763	1.494	1.071	1.138	1.401	831	2.324	2.701	1.314	1.758	1.043	2.157	1.571	2.159	1.111	1.748
I	1.511	1.393	1.670	1.105	2.710	1.508	1.029	1.110	1.325	790	2.281	2.587	1.231	1.741	966	2.143	1.532	2.099	1.085	1.708
II	1.473	1.340	1.567	1.055	2.573	1.566	1.017	1.104	1.323	789	2.186	2.588	1.235	1.705	963	2.132	1.531	1.985	1.037	1.714
III	1.548	1.528	1.671	1.126	2.843	1.536	1.069	1.135	1.405	792	2.369	2.595	1.303	1.756	978	2.162	1.534	2.226	1.276	1.733
IV	1.534	1.479	1.638	1.105	2.772	1.449	1.045	1.137	1.383	788	2.382	2.691	1.289	1.774	967	2.143	1.558	2.170	1.066	1.724
V	1.518	1.413	1.645	1.102	2.696	1.448	1.051	1.122	1.387	807	2.272	2.571	1.234	1.711	991	2.159	1.565	2.096	1.085	1.685
VI	1.546	1.460	1.639	1.120	2.745	1.473	1.073	1.138	1.425	811	2.298	2.987	1.256	1.748	992	2.150	1.569	2.147	1.094	1.734
VII	1.541	1.393	1.671	1.130	2.770	1.495	1.069	1.131	1.404	839	2.337	2.719	1.316	1.775	1.023	2.151	1.563	2.147	1.116	1.740
VIII	1.548	1.433	1.672	1.116	2.787	1.487	1.070	1.129	1.409	852	2.307	2.671	1.286	1.775	1.106	2.163	1.634	2.174	1.098	1.770
IX	1.543	1.445	1.666	1.131	2.755	1.490	1.091	1.132	1.400	862	2.310	2.618	1.387	1.733	1.107	2.146	1.571	2.196	1.099	1.870
X	1.546	1.399	1.666	1.136	2.685	1.463	1.097	1.136	1.421	871	2.300	2.672	1.404	1.760	1.102	2.164	1.591	2.153	1.120	1.796
XI	1.583	1.548	1.649	1.181	2.830	1.488	1.107	1.172	1.464	881	2.370	2.624	1.413	1.760	1.126	2.174	1.608	2.225	1.120	1.680
XII	1.616	1.486	1.686	1.195	2.973	1.523	1.138	1.199	1.453	875	2.455	3.091	1.460	1.849	1.143	2.199	1.602	2.293	1.132	1.801
2022	1.724	1.570	1.891	1.304	2.956	1.591	1.237	1.323	1.610	1.027	2.556	2.797	1.613	2.023	1.399	2.348	1.741	2.310	1.321	1.949
I	1.614	1.410	1.699	1.232	2.787	1.522	1.172	1.237	1.503	976	2.299	2.646	1.523	1.897	1.202	2.221	1.632	2.183	1.304	1.900
II	1.614	1.485	1.636	1.228	2.656	1.493	1.168	1.262	1.505	997	2.399	2.701	1.549	1.907	1.256	2.238	1.647	2.085	1.266	1.895
III	1.694	1.618	1.770	1.296	3.024	1.602	1.215	1.307	1.583	1.002	2.516	2.710	1.606	1.939	1.304	2.291	1.673	2.308	1.281	1.917
IV	1.667	1.547	1.749	1.280	2.837	1.550	1.189	1.312	1.552	1.012	2.491	2.767	1.642	1.952	1.295	2.288	1.691	2.144	1.280	1.909
V	1.714	1.550	1.930	1.298	2.992	1.606	1.226	1.337	1.638	1.027	2.550	2.828	1.627	2.000	1.392	2.311	1.711	2.248	1.302	1.926
VI	1.723	1.603	1.948	1.292	2.919	1.615	1.247	1.345												

**3. PLAĆE**  
WAGES

**3.5. NOMINALNI I REALNI INDEKSI PROSJEČNIH NETO PLAĆA U FEDERACIJI BIH**  
NOMINAL AND REAL INDICES OF AVERAGE NET WAGES IN FEDERATION OF BIH

	Nominalni indeksi neto plaće					Realni indeksi neto plaće				
	Nominal indices net wage					Real indices net wage				
	2018 2017	2019 2018	2020 2019	2021 2020	2022 2021	2018 2017	2019 2018	2020 2019	2021 2020	2022 2021
<b>UKUPNO</b> <i>TOTAL</i>	<b>103,4</b>	<b>104,4</b>	<b>103,0</b>	<b>104,2</b>	<b>111,8</b>	<b>101,7</b>	<b>103,8</b>	<b>104,0</b>	<b>102,0</b>	<b>97,3</b>
<b>A Poljoprivreda, šumarstvo i ribolov</b> <i>Agriculture, forestry and fishing</i>	102,4	104,8	101,4	102,4	109,1	100,8	104,2	102,4	100,3	95,0
<b>B Vađenje ruda i kamena</b> <i>Mining and quarrying</i>	103,4	100,8	103,8	102,1	115,7	101,8	100,2	104,8	100,0	100,7
<b>C Prerađivačka industrija</b> <i>Manufacturing</i>	103,2	104,8	102,4	107,1	115,8	101,6	104,2	103,3	104,9	100,8
<b>D Proizvodnja i snabdijevanje električnom energijom, plinom, parom i klimatizacija</b> <i>Electricity, gas, steam and air conditioning supply</i>	101,9	103,1	100,0	101,6	106,5	100,3	102,5	100,9	99,5	92,7
<b>E Snabdijevanje vodom; uklanjanje otpadnih voda, upravljanje otpadom te djelatnosti sanacije okoliša</b> <i>Water supply, sewerage, waste management and remediation activities</i>	102,1	102,6	101,5	101,8	109,1	100,4	102,0	102,4	99,7	94,9
<b>F Građevinarstvo</b> <i>Construction</i>	103,5	107,5	104,3	105,9	116,1	101,9	106,9	105,2	103,8	101,0
<b>G Trgovina na veliko i na malo; popravak motornih vozila i motocikala</b> <i>Wholesale and retail trade; repair of motor vehicles and motorcycles</i>	103,5	106,9	102,6	103,7	116,7	101,9	106,3	103,5	101,5	101,5
<b>H Prijevoz i skladištenje</b> <i>Transportation and storage</i>	103,4	101,7	99,3	102,8	114,7	101,8	101,1	100,2	100,7	99,8
<b>I Djelatnosti pružanja smještaja te pripreme i usluživanja hrane(hotelijerstvo i ugostiteljstvo)</b> <i>Accommodation and food service activities</i>	101,1	101,7	95,6	105,6	122,0	99,5	101,1	96,5	103,4	106,2
<b>J Informacije i komunikacije</b> <i>Information and communication</i>	102,2	104,1	102,6	105,7	110,1	100,6	103,5	103,6	103,5	95,8
<b>K Finansijske djelatnosti i djelatnosti osiguranja</b> <i>Financial and insurance activities</i>	102,4	109,5	100,2	103,3	103,5	100,8	108,9	101,1	101,2	90,0
<b>L Poslovanje nekretninama</b> <i>Real estate activities</i>	90,5	109,0	95,9	106,3	120,9	89,1	108,3	96,8	104,1	105,2
<b>M Stručne, naučne i tehničke djelatnosti</b> <i>Professional, scientific and technical activities</i>	100,1	101,4	98,0	106,7	114,9	98,5	100,8	98,9	104,5	100,0
<b>N Administrativne i pomoćne uslužne djelatnosti</b> <i>Administrative and support service activities</i>	105,5	100,7	102,3	108,5	132,9	103,9	100,1	103,2	106,2	115,7
<b>O Javna uprava i odbrana; obavezno socijalno osiguranje</b> <i>Public administration and defence; compulsory social security</i>	102,2	103,8	102,5	102,1	108,7	100,6	103,1	103,4	100,0	94,6
<b>P Obrazovanje</b> <i>Education</i>	105,5	106,4	102,9	103,2	110,6	103,9	105,7	103,9	101,0	96,2
<b>Q Djelatnosti zdravstvene i socijalne zaštite</b> <i>Human health and social work activities</i>	110,7	107,4	104,0	104,0	107,3	109,0	106,7	104,9	101,9	93,4
<b>R Umjetnost, zabava i rekreacija</b> <i>Arts, entertainment and recreation</i>	99,8	112,8	98,4	99,2	120,2	98,3	112,1	99,3	97,1	104,6
<b>S Ostale uslužne djelatnosti</b> <i>Other service activities</i>	103,9	103,8	102,6	103,4	111,5	102,2	103,2	103,6	101,3	97,1

**4. PREGLED PO KANTONIMA I OPĆINAMA**  
 REVIEW BY CANTONS AND MUNICIPALITIES

**4.1. ZAPOSLENI PO KANTONIMA I PODRUČJIMA KD BIH 2010**  
 EMPLOYED PERSONS BY CANTONS AND BY SECTIONS KD BIH 2010

Godina Year	Kanton Canton	Ukupno Total	Područja/Sections																		
			A	B	C	D	E	F	G	H	I	J	K	L	M	N	O	P	Q	R	S
<b>Federacija BiH</b>																					
2018		<b>519.800</b>	10.940	12.995	105.098	8.703	8.551	24.936	97.110	24.062	26.237	14.419	11.920	3.010	16.291	11.205	47.133	42.797	34.148	10.136	10.109
2019		<b>531.483</b>	10.989	13.259	106.385	8.724	8.652	26.007	98.951	24.857	27.414	15.509	12.115	3.206	16.593	12.068	48.077	43.436	34.627	10.087	10.527
2020		<b>520.162</b>	10.743	12.671	101.729	8.645	8.527	26.363	95.570	24.419	24.473	16.224	12.070	3.073	16.594	12.464	48.228	43.113	35.360	9.350	10.546
2021		<b>525.397</b>	10.984	12.244	103.541	8.549	8.446	26.334	95.420	24.423	24.679	17.754	12.034	2.854	17.264	13.197	47.985	43.400	36.097	9.571	10.621
2022		<b>535.665</b>	11.013	11.489	106.439	8.486	8.587	25.642	97.373	25.000	26.187	19.362	11.852	2.623	18.265	13.709	47.943	44.234	37.031	9.650	10.780
<b>Unsko-sanski</b>																					
2018		<b>37.687</b>	1.551	169	6.892	451	985	1.660	8.237	1.199	2.193	537	695	132	928	609	2.992	4.255	2.616	825	761
2019		<b>38.220</b>	1.494	164	6.916	449	963	1.705	8.359	1.237	2.265	535	721	229	954	727	3.134	4.181	2.618	801	768
2020		<b>37.085</b>	1.533	153	6.526	437	952	1.729	7.862	1.215	2.075	519	727	192	954	775	3.150	4.061	2.687	748	790
2021		<b>37.712</b>	1.619	154	6.941	428	944	1.791	7.785	1.259	2.183	520	729	186	978	812	3.085	4.026	2.737	754	781
2022		<b>38.353</b>	1.587	221	7.215	395	945	1.805	7.982	1.289	2.298	522	691	172	1.002	800	3.074	3.976	2.828	765	786
<b>Posavski</b>																					
2018		<b>6.497</b>	173	10	1.560	111	102	172	1.386	273	405	79	70	-	101	77	834	511	430	125	78
2019		<b>6.549</b>	177	12	1.602	109	93	174	1.358	283	407	64	70	-	104	65	860	512	456	122	81
2020		<b>6.353</b>	188	13	1.497	107	88	195	1.291	273	402	70	72	2	100	58	878	500	437	106	76
2021		<b>6.296</b>	201	14	1.462	108	81	198	1.270	273	393	70	78	2	115	58	868	494	429	111	71
2022		<b>6.459</b>	217	7	1.569	111	86	196	1.307	270	386	70	63	7	134	59	862	489	455	101	70
<b>Tuzlanski</b>																					
2018		<b>96.461</b>	1.551	6.583	23.166	1.582	1.401	5.875	17.896	5.314	3.340	1.490	1.565	226	2.195	1.312	5.311	7.891	6.635	1.569	1.559
2019		<b>99.067</b>	1.512	6.809	24.155	1.558	1.422	6.296	18.055	5.521	3.420	1.685	1.638	206	2.217	1.417	5.333	7.933	6.739	1.564	1.587
2020		<b>97.863</b>	1.507	6.535	23.474	1.523	1.424	6.351	17.661	5.502	3.158	1.908	1.640	190	2.147	1.563	5.431	7.912	6.830	1.497	1.610
2021		<b>99.589</b>	1.520	6.515	23.949	1.495	1.440	6.369	17.871	5.605	3.358	2.142	1.643	179	2.035	1.736	5.395	8.002	7.141	1.532	1.662
2022		<b>101.192</b>	1.509	6.158	24.694	1.427	1.499	6.223	18.337	5.694	3.563	2.292	1.609	168	2.114	1.768	5.405	8.114	7.313	1.568	1.737
<b>Zeničko-dobojski</b>																					
2018		<b>82.688</b>	2.130	4.718	27.156	1.328	1.165	3.959	12.025	3.821	3.216	699	1.010	331	1.745	1.142	4.391	6.865	4.548	1.284	1.155
2019		<b>84.169</b>	2.122	4.747	27.089	1.355	1.208	4.209	12.598	3.920	3.446	730	1.025	286	1.805	1.113	4.439	6.980	4.599	1.253	1.245
2020		<b>82.073</b>	1.966	4.488	25.933	1.366	1.190	4.223	12.316	3.777	3.266	752	1.005	299	1.823	1.122	4.452	7.050	4.671	1.131	1.243
2021		<b>82.178</b>	2.050	4.125	26.209	1.337	1.183	4.152	12.436	3.667	3.348	789	998	297	1.869	1.099	4.372	7.141	4.719	1.154	1.233
2022		<b>82.740</b>	2.144	3.766	26.788	1.282	1.189	4.009	12.457	3.787	3.413	786	975	274	1.909	1.154	4.353	7.269	4.811	1.113	1.261
<b>Bosansko-podrinjski</b>																					
2018		<b>7.291</b>	165	-	3.435	52	91	150	760	217	224	86	85	3	69	72	781	477	407	109	108
2019		<b>7.083</b>	163	-	3.311	52	93	166	732	203	224	89	88	-	64	72	767	441	408	99	111
2020		<b>6.882</b>	149	-	3.127	53	95	161	718	193	227	90	91	-	66	72	757	469	409	89	116
2021		<b>6.913</b>	149	-	3.185	53	99	155	712	190	213	93	97	-	69	72	736	469	416	90	115
2022		<b>6.980</b>	140	-	3.270	46	100	137	698	185	216	94	92	-	73	88	729	485	425	91	111
<b>Srednjobosanski</b>																					
2018		<b>50.957</b>	1.718	1.125	16.826	720	718	1.667	9.727	1.451	2.286	439	498	101	612	566	2.981	4.178	3.311	1.356	677
2019		<b>51.583</b>	1.745	1.148	16.556	717	755	1.814	9.901	1.574	2.377	473	509	111	614	604	3.087	4.204	3.407	1.294	693
2020		<b>50.024</b>	1.718	1.115	15.713	714	762	2.006	9.247	1.562	2.292	482	532	114	593	614	3.066	4.261	3.446	1.091	696
2021		<b>49.930</b>	1.828	1.117	15.672	696	768	1.995	9.074	1.587	2.316	484	525	132	616	596	2.958	4.304	3.370	1.196	696
2022		<b>50.474</b>	1.833	1.055	15.662	678	765	1.998	9.366	1.641	2.347	526	525	143	648	626	2.990	4.383	3.420	1.159	709

**4. PREGLED PO KANTONIMA I OPĆINAMA**  
 REVIEW BY CANTONS AND MUNICIPALITIES

**4.1. ZAPOSLENI PO KANTONIMA I PODRUČJIMA KD BIH 2010 - nastavak**  
 EMPLOYED PERSONS BY CANTONS AND BY SECTIONS KD BIH 2010 - continued

Godina Year	Kanton Canton	Ukupno Total	Područja/Sections																		
			A	B	C	D	E	F	G	H	I	J	K	L	M	N	O	P	Q	R	S
Hercegovačko-neretvanski																					
2018		<b>54.133</b>	872	110	7.420	2.125	1.001	2.675	10.472	2.890	4.178	1.641	1.185	183	1.232	1.063	4.878	5.235	4.754	1.274	945
2019		<b>55.213</b>	902	119	7.546	2.161	1.033	2.674	10.679	2.999	4.335	1.694	1.167	201	1.279	1.124	4.972	5.229	4.845	1.266	988
2020		<b>52.336</b>	824	122	6.651	2.164	1.001	2.611	10.073	2.829	3.546	1.770	1.192	187	1.282	1.068	4.945	4.868	5.006	1.192	1.005
2021		<b>52.673</b>	798	99	6.879	2.187	1.009	2.591	10.019	2.787	3.493	1.891	1.194	166	1.374	985	4.891	4.914	5.155	1.264	977
2022		<b>54.898</b>	816	66	7.521	2.196	1.030	2.507	10.350	2.849	3.877	2.078	1.176	171	1.511	1.015	5.067	5.023	5.327	1.304	1.014
Zapadnohercegovački																					
2018		<b>19.322</b>	426	182	3.504	208	204	1.165	6.384	682	832	81	253	121	678	221	1.399	1.704	677	396	205
2019		<b>20.020</b>	519	174	3.658	208	242	1.157	6.506	732	857	92	282	147	709	199	1.441	1.740	722	410	225
2020		<b>20.041</b>	540	173	3.709	215	233	1.157	6.468	741	836	100	300	136	717	182	1.417	1.742	736	397	242
2021		<b>20.401</b>	522	145	3.906	218	228	1.205	6.459	752	864	112	353	87	726	216	1.440	1.761	749	409	249
2022		<b>20.915</b>	526	123	4.118	221	244	1.173	6.618	780	901	135	321	90	756	221	1.435	1.800	777	416	260
Kanton Sarajevo																					
2018		<b>147.848</b>	1.098	58	13.809	1.942	2.670	7.100	28.275	7.886	8.807	9.313	6.423	1.895	8.573	6.074	15.912	10.580	10.032	2.933	4.468
2019		<b>152.394</b>	1.003	53	14.144	1.926	2.633	7.289	28.803	8.052	9.336	10.089	6.490	2.010	8.692	6.671	16.282	11.116	10.109	3.018	4.678
2020		<b>150.451</b>	1.004	38	13.638	1.874	2.570	7.388	28.064	8.003	7.937	10.480	6.391	1.934	8.763	6.934	16.406	11.161	10.400	2.855	4.611
2021		<b>152.576</b>	962	37	13.754	1.836	2.483	7.341	27.962	7.973	7.764	11.606	6.302	1.790	9.331	7.541	16.573	11.206	10.630	2.797	4.688
2022		<b>156.488</b>	939	47	13.908	1.930	2.516	7.043	28.418	8.186	8.444	12.789	6.284	1.585	9.961	7.879	16.512	11.595	10.907	2.869	4.676
Kanton 10																					
2018		<b>10.723</b>	1.256	41	1.327	185	213	513	1.946	330	757	54	137	17	159	68	1.462	1.100	739	265	154
2019		<b>10.906</b>	1.353	34	1.402	189	210	525	1.960	335	748	56	125	18	157	76	1.484	1.099	723	261	151
2020		<b>10.869</b>	1.316	34	1.462	191	211	542	1.870	324	736	52	120	18	150	79	1.540	1.088	739	242	155
2021		<b>10.956</b>	1.336	38	1.578	192	212	538	1.832	330	748	47	115	15	151	81	1.494	1.083	753	264	149
2022		<b>11.235</b>	1.302	46	1.694	200	213	551	1.840	319	742	70	116	13	157	99	1.585	1.100	768	264	156

#### 4. PREGLED PO KANTONIMA I OPĆINAMA

REVIEW BY CANTONS AND MUNICIPALITIES

#### 4.2. ZAPOSLENI U FEDERACIJI BIH PO OPCINAMA I SPOLU

EMPLOYED PERSONS IN FEDERATION OF BIH BY MUNICIPALITIES AND SEX

Općine/Municipalities	Spol/Sex	2018	2019	2020	2021	2022
Federacija BiH/Federation of BiH	svoga/all	519.800	531.483	520.162	525.397	535.665
	žene/women	215.317	222.516	218.280	222.303	232.282
Unsko-sanski kanton	svoga/all	37.687	38.220	37.085	37.712	38.353
	žene/women	15.992	16.351	15.847	16.126	16.724
Grad Bihać	svoga/all	13.495	13.806	13.354	13.440	13.512
	žene/women	6.081	6.286	6.065	6.150	6.320
Bosanska Krupa	svoga/all	3.343	3.378	3.300	3.503	3.596
	žene/women	1.225	1.222	1.223	1.267	1.361
Bosanski Petrovac	svoga/all	1.274	1.319	1.276	1.372	1.443
	žene/women	427	463	450	482	514
Bužim	svoga/all	1.505	1.449	1.457	1.492	1.580
	žene/women	631	603	601	609	652
Grad Cazin	svoga/all	7.031	7.151	7.052	7.147	7.299
	žene/women	3.109	3.178	3.141	3.205	3.320
Ključ	svoga/all	1.640	1.586	1.480	1.534	1.513
	žene/women	676	669	625	663	686
Sanski Most	svoga/all	4.425	4.448	4.239	4.256	4.414
	žene/women	1.715	1.711	1.640	1.627	1.687
Velika Kladuša	svoga/all	4.974	5.083	4.927	4.968	4.996
	žene/women	2.128	2.219	2.102	2.123	2.184
Kanton Posavski	svoga/all	6.497	6.549	6.353	6.296	6.459
	žene/women	2.720	2.776	2.666	2.661	2.787
Domaljevac-Šamac	svoga/all	381	401	413	434	454
	žene/women	177	188	195	206	218
Odžak	svoga/all	2.556	2.543	2.469	2.436	2.538
	žene/women	970	971	924	916	996
Orašje	svoga/all	3.560	3.605	3.471	3.426	3.467
	žene/women	1.573	1.617	1.547	1.539	1.573
Tuzlanski kanton	svoga/all	96.461	99.067	97.863	99.589	101.192
	žene/women	35.701	37.119	36.814	38.021	40.063
Banovići	svoga/all	5.084	5.368	5.256	5.204	5.309
	žene/women	1.293	1.362	1.352	1.371	1.474
Čelić	svoga/all	1.172	1.158	1.073	1.104	1.173
	žene/women	427	432	382	399	442
Doboj Istok	svoga/all	1.856	1.902	1.850	1.815	1.865
	žene/women	805	849	817	797	832

**4. PREGLED PO KANTONIMA I OPĆINAMA**  
*REVIEW BY CANTONS AND MUNICIPALITIES*

**4.2. ZAPOSLENI U FEDERACIJI BIH PO OPCINAMA I SPOLU - nastavak**  
*EMPLOYED PERSONS IN FEDERATION OF BIH BY MUNICIPALITIES AND SEX - continued*

<i>Općine/Municipalities</i>	<i>Spol/Sex</i>	2018	2019	2020	2021	2022
Grad Gračanica	<i>svoga/all</i>	10.776	10.965	10.813	10.953	11.065
	<i>žene/women</i>	4.147	4.341	4.267	4.378	4.558
Grad Gradačac	<i>svoga/all</i>	8.877	8.987	8.663	8.786	8.895
	<i>žene/women</i>	3.387	3.527	3.417	3.405	3.563
Kalesija	<i>svoga/all</i>	4.446	4.371	4.194	4.399	4.620
	<i>žene/women</i>	1.339	1.387	1.383	1.462	1.616
Kladanj	<i>svoga/all</i>	2.042	1.891	1.701	1.663	1.637
	<i>žene/women</i>	678	664	604	605	616
Lukavac	<i>svoga/all</i>	9.177	9.617	9.377	9.146	9.516
	<i>žene/women</i>	3.038	3.335	3.343	3.488	3.796
Sapna	<i>svoga/all</i>	629	610	577	603	593
	<i>žene/women</i>	154	163	157	189	186
Grad Srebrenik	<i>svoga/all</i>	5.971	6.136	6.186	6.306	6.513
	<i>žene/women</i>	1.919	1.993	2.025	2.091	2.238
Teočak	<i>svoga/all</i>	487	458	459	448	430
	<i>žene/women</i>	144	153	164	159	170
Grad Tuzla	<i>svoga/all</i>	35.807	36.693	36.798	38.233	38.492
	<i>žene/women</i>	15.301	15.522	15.344	15.840	16.488
Grad Živinice	<i>svoga/all</i>	10.137	10.911	10.916	10.929	11.084
	<i>žene/women</i>	3.069	3.391	3.559	3.837	4.084
<b>Zeničko-dobojski kanton</b>	<i>svoga/all</i>	<b>82.688</b>	<b>84.169</b>	<b>82.073</b>	<b>82.178</b>	<b>82.740</b>
	<i>žene/women</i>	<b>32.572</b>	<b>33.600</b>	<b>33.005</b>	<b>33.482</b>	<b>34.567</b>
Breza	<i>svoga/all</i>	2.894	2.999	2.962	2.912	2.775
	<i>žene/women</i>	762	819	830	853	886
Doboj Jug	<i>svoga/all</i>	1.410	1.518	1.539	1.533	1.565
	<i>žene/women</i>	430	460	467	477	495
Kakanj	<i>svoga/all</i>	7.179	7.283	7.098	6.970	6.777
	<i>žene/women</i>	2.232	2.339	2.304	2.315	2.340
Maglaj	<i>svoga/all</i>	4.511	4.521	4.311	4.250	4.245
	<i>žene/women</i>	1.954	2.016	1.907	1.883	1.947
Olovo	<i>svoga/all</i>	2.008	1.979	1.888	1.947	1.929
	<i>žene/women</i>	747	731	733	784	822
Tešanj	<i>svoga/all</i>	13.697	13.852	13.535	13.783	13.900
	<i>žene/women</i>	5.823	5.968	5.878	5.983	6.180
Usora	<i>svoga/all</i>	1.657	1.822	1.780	1.921	2.048
	<i>žene/women</i>	490	531	556	640	703



**4. PREGLED PO KANTONIMA I OPĆINAMA**  
*REVIEW BY CANTONS AND MUNICIPALITIES*

**4.2. ZAPOSLENI U FEDERACIJI BIH PO OPCINAMA I SPOLU - nastavak**  
*EMPLOYED PERSONS IN FEDERATION OF BIH BY MUNICIPALITIES AND SEX - continued*

<i>Općine/Municipalities</i>	<i>Spol/Sex</i>	2018	2019	2020	2021	2022
Vareš	<b>svega/all</b>	1.339	1.316	1.228	1.242	1.317
	<b>žene/women</b>	515	525	514	535	563
Grad Visoko	<b>svega/all</b>	10.371	10.611	10.304	10.389	10.511
	<b>žene/women</b>	4.494	4.649	4.496	4.552	4.783
Zavidovići	<b>svega/all</b>	4.946	5.021	4.811	4.757	4.725
	<b>žene/women</b>	2.117	2.168	2.081	2.054	2.086
Grad Zenica	<b>svega/all</b>	27.102	27.587	27.136	26.906	27.307
	<b>žene/women</b>	10.795	11.084	11.000	11.128	11.375
Žepče	<b>svega/all</b>	5.574	5.660	5.481	5.568	5.641
	<b>žene/women</b>	2.213	2.310	2.239	2.278	2.387
<b>Bosansko-podrinjski kanton</b>	<b>svega/all</b>	<b>7.291</b>	<b>7.083</b>	<b>6.882</b>	<b>6.913</b>	<b>6.980</b>
	<b>žene/women</b>	<b>3.281</b>	<b>3.195</b>	<b>3.123</b>	<b>3.140</b>	<b>3.258</b>
Foča	<b>svega/all</b>	240	219	207	194	180
	<b>žene/women</b>	83	81	81	75	70
Grad Goražde	<b>svega/all</b>	6.936	6.750	6.573	6.629	6.713
	<b>žene/women</b>	3.153	3.072	3.001	3.025	3.151
Pale	<b>svega/all</b>	115	114	102	90	87
	<b>žene/women</b>	45	42	41	40	37
<b>Srednjobosanski kanton</b>	<b>svega/all</b>	<b>50.957</b>	<b>51.583</b>	<b>50.024</b>	<b>49.930</b>	<b>50.474</b>
	<b>žene/women</b>	<b>20.576</b>	<b>21.153</b>	<b>20.518</b>	<b>20.619</b>	<b>21.330</b>
Bugojno	<b>svega/all</b>	5.595	5.681	5.542	5.575	5.749
	<b>žene/women</b>	2.562	2.589	2.497	2.546	2.698
Busovača	<b>svega/all</b>	2.227	2.244	2.253	2.261	2.304
	<b>žene/women</b>	790	841	833	855	923
Dobretići	<b>svega/all</b>	29	31	27	27	40
	<b>žene/women</b>	10	9	8	8	9
Donji Vakuf	<b>svega/all</b>	3.060	3.195	3.062	3.123	2.647
	<b>žene/women</b>	935	1.068	1.037	1.036	964
Fojnica	<b>svega/all</b>	2.262	2.249	2.218	2.170	2.269
	<b>žene/women</b>	1.147	1.160	1.158	1.142	1.204
Gornji Vakuf - Uskoplje	<b>svega/all</b>	3.174	3.161	2.980	2.911	2.993
	<b>žene/women</b>	1.001	1.062	1.078	1.074	1.107
Jajce	<b>svega/all</b>	3.738	3.832	3.865	3.962	4.124
	<b>žene/women</b>	1.169	1.241	1.243	1.270	1.349
Kiseljak	<b>svega/all</b>	4.300	4.470	4.437	4.398	4.419
	<b>žene/women</b>	1.647	1.700	1.670	1.697	1.737

**4. PREGLED PO KANTONIMA I OPĆINAMA**  
*REVIEW BY CANTONS AND MUNICIPALITIES*

**4.2. ZAPOSLENI U FEDERACIJI BIH PO OPCINAMA I SPOLU - nastavak**  
*EMPLOYED PERSONS IN FEDERATION OF BIH BY MUNICIPALITIES AND SEX - continued*

<i>Općine/Municipalities</i>	<i>Spol/Sex</i>	2018	2019	2020	2021	2022
Kreševo	<i>svoga/all</i>	1.246	1.212	1.184	1.180	1.225
	<i>žene/women</i>	385	389	386	393	414
Novi Travnik	<i>svoga/all</i>	4.427	4.493	4.380	4.332	4.433
	<i>žene/women</i>	1.809	1.820	1.766	1.752	1.796
Travnik	<i>svoga/all</i>	13.823	13.796	13.396	13.173	13.382
	<i>žene/women</i>	6.252	6.343	6.189	6.199	6.403
Vitez	<i>svoga/all</i>	7.076	7.219	6.680	6.818	6.889
	<i>žene/women</i>	2.869	2.931	2.653	2.647	2.726
<b>Hercegovačko-neretvanski kanton</b>	<i>svoga/all</i>	<b>54.133</b>	<b>55.213</b>	<b>52.336</b>	<b>52.673</b>	<b>54.898</b>
	<i>žene/women</i>	<b>24.729</b>	<b>25.422</b>	<b>24.210</b>	<b>24.470</b>	<b>25.829</b>
Grad Čapljina	<i>svoga/all</i>	3.503	3.596	3.511	3.444	3.598
	<i>žene/women</i>	1.633	1.670	1.646	1.619	1.713
Čitluk	<i>svoga/all</i>	5.471	5.685	5.002	4.613	5.067
	<i>žene/women</i>	2.379	2.527	2.103	1.922	2.213
Jablanica	<i>svoga/all</i>	2.022	2.039	1.943	1.938	1.978
	<i>žene/women</i>	711	732	672	703	769
Konjic	<i>svoga/all</i>	5.783	5.920	5.803	6.007	6.278
	<i>žene/women</i>	2.297	2.397	2.380	2.507	2.630
Grad Mostar	<i>svoga/all</i>	33.475	33.929	32.104	32.654	33.883
	<i>žene/women</i>	15.852	16.151	15.468	15.746	16.489
Neum	<i>svoga/all</i>	1.057	1.119	1.059	1.066	1.113
	<i>žene/women</i>	526	555	522	526	562
Prozor	<i>svoga/all</i>	1.414	1.431	1.412	1.439	1.421
	<i>žene/women</i>	615	618	600	618	608
Ravno	<i>svoga/all</i>	131	159	162	167	169
	<i>žene/women</i>	50	60	60	68	68
Stolac	<i>svoga/all</i>	1.277	1.335	1.340	1.345	1.391
	<i>žene/women</i>	666	712	759	761	777
<b>Zapadnohercegovački kanton</b>	<i>svoga/all</i>	<b>19.322</b>	<b>20.020</b>	<b>20.041</b>	<b>20.401</b>	<b>20.915</b>
	<i>žene/women</i>	<b>7.776</b>	<b>8.176</b>	<b>8.189</b>	<b>8.318</b>	<b>8.733</b>
Grude	<i>svoga/all</i>	3.829	3.931	3.941	3.953	4.043
	<i>žene/women</i>	1.484	1.533	1.535	1.562	1.640
Grad Ljubuški	<i>svoga/all</i>	4.465	4.713	4.748	4.726	4.790
	<i>žene/women</i>	1.966	2.106	2.136	2.133	2.201
Posušje	<i>svoga/all</i>	3.616	3.721	3.703	3.784	3.919
	<i>žene/women</i>	1.477	1.549	1.527	1.577	1.665
Grad Široki Brijeg	<i>svoga/all</i>	7.412	7.655	7.649	7.938	8.163
	<i>žene/women</i>	2.849	2.988	2.991	3.046	3.227

**4. PREGLED PO KANTONIMA I OPĆINAMA**  
*REVIEW BY CANTONS AND MUNICIPALITIES*

**4.2. ZAPOSLENI U FEDERACIJI BIH PO OPCINAMA I SPOLU - nastavak**  
*EMPLOYED PERSONS IN FEDERATION OF BIH BY MUNICIPALITIES AND SEX - continued*

<i>Općine/Municipalities</i>	<i>Spol/Sex</i>	2018	2019	2020	2021	2022
<b>Kanton Sarajevo</b>	<b>svoga/all</b>	<b>147.848</b>	<b>152.394</b>	<b>150.451</b>	<b>152.576</b>	<b>156.488</b>
	<b>žene/women</b>	<b>66.978</b>	<b>69.644</b>	<b>68.767</b>	<b>70.226</b>	<b>73.513</b>
Centar Sarajevo	svoga/all	44.668	45.591	44.847	44.443	45.312
	žene/women	23.482	24.144	23.767	23.521	24.201
Hadžići	svoga/all	4.777	4.913	5.026	5.246	5.336
	žene/women	1.775	1.853	1.920	2.014	2.131
Ilidža	svoga/all	22.943	24.095	23.602	24.216	25.295
	žene/women	8.892	9.477	9.254	9.647	10.513
Ilijaš	svoga/all	4.335	4.300	3.905	4.072	4.254
	žene/women	1.444	1.470	1.432	1.511	1.617
Novi Grad Sarajevo	svoga/all	28.379	29.501	29.853	30.616	30.838
	žene/women	11.442	12.142	12.292	12.762	13.162
Novo Sarajevo	svoga/all	25.759	26.513	26.597	27.536	28.448
	žene/women	12.134	12.508	12.547	13.235	13.957
Stari Grad Sarajevo	svoga/all	11.209	11.247	10.353	10.047	10.436
	žene/women	5.584	5.645	5.173	5.079	5.362
Tmovo	svoga/all	293	290	302	325	381
	žene/women	126	126	125	131	139
Vogošća	svoga/all	5.485	5.944	5.966	6.075	6.188
	žene/women	2.099	2.279	2.257	2.326	2.431
<b>Kanton 10</b>	<b>svoga/all</b>	<b>10.723</b>	<b>10.906</b>	<b>10.869</b>	<b>10.956</b>	<b>11.235</b>
	<b>žene/women</b>	<b>4.470</b>	<b>4.547</b>	<b>4.591</b>	<b>4.676</b>	<b>4.898</b>
Bosansko Grahovo	svoga/all	171	187	208	226	228
	žene/women	65	68	74	73	79
Drvar	svoga/all	1.007	1.008	1.034	1.038	1.054
	žene/women	350	363	420	439	441
Glamoč	svoga/all	510	507	512	537	546
	žene/women	145	149	153	154	169
Kupres	svoga/all	1.357	1.449	1.415	1.436	1.429
	žene/women	359	393	396	410	421
Grad Livno	svoga/all	4.432	4.490	4.468	4.495	4.614
	žene/women	2.096	2.103	2.078	2.116	2.204
Tomislavgrad	svoga/all	3.246	3.265	3.232	3.224	3.364
	žene/women	1.455	1.471	1.470	1.484	1.584

**4. PREGLED PO KANTONIMA I OPĆINAMA**  
*REVIEW BY CANTONS AND MUNICIPALITIES*

**4.3. NETO PLAĆE PO KANTONIMA I PODRUČJIMA KD BIH 2010**  
*NET WAGES BY CANTONS AND BY SECTIONS KD BIH 2010*

KM

Godina Year	Kanton/Canton	Ukupno Total	Područja/Sections																		
			A	B	C	D	E	F	G	H	I	J	K	L	M	N	O	P	Q	R	S
<b>Federacija BiH</b>																					
2018		<b>889</b>	858	1.007	646	1.640	894	586	649	879	536	1.309	1.508	770	1.060	609	1.275	897	1.196	649	1.025
2019		<b>928</b>	899	1.015	677	1.691	917	630	694	894	545	1.363	1.652	839	1.075	613	1.323	954	1.284	732	1.064
2020		<b>956</b>	912	1.054	693	1.691	931	657	712	888	521	1.399	1.655	805	1.054	627	1.356	982	1.335	720	1.092
2021		<b>996</b>	934	1.076	742	1.718	948	696	738	913	550	1.479	1.710	856	1.125	680	1.384	1.013	1.389	714	1.129
2022		<b>1.114</b>	1.019	1.245	859	1.830	1.034	808	861	1.047	671	1.628	1.769	1.035	1.293	904	1.504	1.120	1.490	858	1.259
<b>Unsko-sanski</b>																					
2018		<b>840</b>	816	661	646	1.636	875	451	536	801	479	1.174	1.207	1.180	849	747	1.274	909	1.146	572	644
2019		<b>872</b>	890	661	705	1.649	906	479	580	807	521	1.154	1.386	1.275	913	708	1.307	925	1.205	579	706
2020		<b>897</b>	929	692	729	1.636	924	505	600	780	507	1.182	1.376	1.334	940	661	1.320	936	1.223	550	756
2021		<b>933</b>	860	701	800	1.695	986	513	631	807	511	1.178	1.435	1.174	1.147	644	1.367	946	1.258	564	939
2022		<b>1.021</b>	980	850	893	1.810	1.044	621	738	844	608	1.276	1.503	849	1.044	766	1.489	1.010	1.358	705	995
<b>Posavski</b>																					
2018		<b>773</b>	375	-	534	1.741	802	594	519	687	448	1.140	1.204	-	695	922	1.131	881	1.123	407	-
2019		<b>808</b>	367	438	580	1.735	849	650	543	631	437	1.286	1.290	-	724	1.286	1.146	890	1.096	394	-
2020		<b>847</b>	-	432	625	1.738	880	649	610	710	434	1.422	1.300	-	735	1.458	1.183	924	1.154	384	-
2021		<b>897</b>	-	436	697	1.760	934	569	638	743	419	1.407	1.333	-	822	1.036	1.217	994	1.159	388	-
2022		<b>1.025</b>	-	554	913	1.828	1.022	646	742	791	-	1.587	1.711	-	1.111	1.186	1.330	1.107	1.296	548	-
<b>Tuzlanski</b>																					
2018		<b>797</b>	731	983	610	1.607	875	508	548	697	548	1.116	1.240	568	959	568	1.169	829	1.181	657	872
2019		<b>824</b>	797	982	651	1.696	919	583	597	693	511	1.161	1.333	740	1.012	581	1.236	793	1.255	786	931
2020		<b>863</b>	835	1.053	675	1.674	933	583	626	708	527	1.224	1.325	779	924	613	1.282	825	1.371	819	934
2021		<b>906</b>	860	1.077	718	1.693	896	625	668	704	521	1.406	1.357	865	1.072	674	1.306	839	1.485	824	1.014
2022		<b>1.022</b>	902	1.239	843	1.808	995	761	784	778	683	1.671	1.425	919	1.133	876	1.458	956	1.532	917	1.078
<b>Zeničko-dobojski</b>																					
2018		<b>763</b>	796	1.072	593	1.533	810	526	559	687	448	1.214	1.127	659	824	626	1.134	761	1.193	567	650
2019		<b>793</b>	815	1.074	632	1.632	833	581	583	623	443	1.143	1.221	977	852	521	1.205	808	1.267	745	701
2020		<b>820</b>	850	1.076	656	1.602	860	608	597	637	450	1.148	1.249	995	865	538	1.285	814	1.319	614	770
2021		<b>858</b>	892	1.100	700	1.622	895	605	619	655	464	1.089	1.261	928	896	554	1.288	906	1.376	576	834
2022		<b>962</b>	978	1.297	808	1.729	951	725	731	749	590	1.446	1.400	965	1.000	703	1.387	982	1.450	770	928
<b>Bosansko-podrinjski</b>																					
2018		<b>796</b>	932	-	716	1.575	620	630	529	715	412	1.289	1.247	-	-	767	1.074	810	1.088	628	858
2019		<b>810</b>	895	-	711	1.613	645	647	565	716	425	1.305	1.683	-	-	872	1.120	878	1.125	636	892
2020		<b>856</b>	953	-	772	1.564	655	659	606	698	462	1.282	1.438	-	-	874	1.142	897	1.154	630	862
2021		<b>891</b>	982	-	833	1.639	648	675	572	730	477	1.302	1.466	-	-	855	1.145	903	1.185	615	859
2022		<b>1.026</b>	1.203	-	994	1.758	702	718	672	844	591	1.449	1.633	-	-	954	1.290	987	1.259	712	860
<b>Srednjobosanski</b>																					
2018		<b>723</b>	933	961	556	1.579	778	482	600	691	483	1.023	1.145	448	790	832	1.138	756	1.101	420	603
2019		<b>759</b>	1.006	1.036	586	1.526	792	508	648	727	477	909	1.406	490	762	748	1.205	821	1.144	435	616
2020		<b>774</b>	873	1.087	603	1.495	813	538	647	728	453	879	1.457	502	754	718	1.253	848	1.138	434	685
2021		<b>799</b>	943	1.062	651	1.520	842	576	649	739	517	889	1.570	517	890	495	1.265	870	1.199	448	693
2022		<b>893</b>	993	1.156	745	1.643	911	676	749	789	632	1.026	1.546	637	1.344	607	1.369	960	1.290	587	759
<b>Hercegovačko-neretvanski</b>																					
2018		<b>970</b>	699	445	869	1.785	957	521	620	1.175	594	1.465	1.504	799	694	656	1.244	894	1.097	491	1.013
2019		<b>1.011</b>	713	458	842	1.802	970	541	655	1.220	622	1.524	1.615	658	701	679	1.301	921	1.260	543	1.076
2020		<b>1.029</b>	708	455	743	1.808	979	562	656	1.235	573	1.468	1.730	650	650	659	1.339	971	1.303	593	1.024
2021		<b>1.080</b>	717	451	810	1.833	1.007	638	700	1.284	596	1.527	1.859	699	675	677	1.403	999	1.318	650	1.032
2022		<b>1.198</b>	837	570	973	1.946	1.049	747	805	1.517	695	1.577	1.795	817	995	929	1.499	1.102	1.436	846	1.200

#### 4. PREGLED PO KANTONIMA I OPĆINAMA

REVIEW BY CANTONS AND MUNICIPALITIES

#### 4.3. NETO PLAĆE PO KANTONIMA I PODRUČJIMA KD BIH 2010 - nastavak

NET WAGES BY CANTONS AND BY SECTIONS KD BIH 2010 - continued

KM

Godina Year	Kanton/Canton	Ukupno Total	Područja/Sections																		
			A	B	C	D	E	F	G	H	I	J	K	L	M	N	O	P	Q	R	S
Zapadnohercegovački																					
2018		<b>796</b>	494	871	859	1.708	923	634	632	653	439	1.532	1.234	692	1.098	1.080	1.132	872	1.108	436	461
2019		<b>861</b>	474	922	902	1.611	951	718	687	683	428	1.559	1.806	839	1.138	874	1.172	892	1.185	490	497
2020		<b>873</b>	481	923	899	1.602	1.001	794	674	686	443	1.568	1.644	911	1.178	992	1.211	918	1.221	489	497
2021		<b>892</b>	490	920	959	1.611	1.052	806	697	694	493	1.584	1.441	925	1.129	942	1.217	938	1.220	475	539
2022		<b>1.002</b>	584	1.132	1.061	1.673	1.120	947	811	787	569	1.626	1.431	891	1.222	1.076	1.346	1.061	1.257	605	586
Kanton Sarajevo																					
2018		<b>1.096</b>	926	903	772	1.620	968	753	841	1.026	565	1.336	1.667	898	1.186	569	1.429	1.100	1.326	993	1.298
2019		<b>1.153</b>	945	850	806	1.677	982	786	897	1.051	588	1.402	1.737	890	1.200	590	1.476	1.253	1.433	1.111	1.335
2020		<b>1.179</b>	958	841	837	1.712	988	826	927	1.017	548	1.455	1.724	830	1.181	613	1.496	1.281	1.475	1.094	1.356
2021		<b>1.251</b>	1.030	1.549	901	1.757	1.007	941	975	1.098	620	1.547	1.785	912	1.284	699	1.519	1.310	1.517	1.156	1.410
2022		<b>1.390</b>	1.224	1.538	1.009	1.861	1.147	1.055	1.134	1.249	730	1.679	1.853	1.192	1.472	951	1.644	1.450	1.673	1.169	1.537
Kanton 10																					
2018		<b>884</b>	1.060	737	508	1.677	909	877	530	562	438	1.438	1.029	-	709	1.161	1.129	923	1.131	386	-
2019		<b>890</b>	1.030	408	504	1.731	905	877	575	546	461	1.434	1.078	-	601	975	1.152	917	1.191	384	-
2020		<b>929</b>	1.134	-	507	1.739	907	916	558	558	464	1.463	1.243	-	425	999	1.194	972	1.204	371	-
2021		<b>942</b>	1.135	-	531	1.740	932	955	607	563	469	1.492	1.245	423	758	911	1.225	993	1.248	391	704
2022		<b>1.047</b>	1.190	1.338	666	1.820	934	1.083	729	682	598	1.512	1.399	-	897	1.013	1.323	1.132	1.312	545	1.111

4. PREGLED PO KANTONIMA I OPĆINAMA  
REVIEW BY CANTONS AND MUNICIPALITIES

4.4. BRUTO PLAĆE PO KANTONIMA I PODRUČJIMA KD BIH 2010  
GROSS WAGES BY CANTONS AND BY SECTIONS KD BIH 2010

KM

Godina Year	Kanton/Canton	Ukupno Total	Područja/Sections																		
			A	B	C	D	E	F	G	H	I	J	K	L	M	N	O	P	Q	R	S
<b>Federacija BiH</b>																					
2018		<b>1.365</b>	1.303	1.544	973	2.558	1.362	883	987	1.344	809	2.042	2.364	1.179	1.649	927	1.978	1.383	1.858	990	1.576
2019		<b>1.427</b>	1.369	1.561	1.022	2.642	1.400	951	1.054	1.369	824	2.131	2.593	1.293	1.675	934	2.054	1.475	1.998	1.123	1.648
2020		<b>1.472</b>	1.389	1.623	1.046	2.641	1.422	994	1.087	1.360	788	2.191	2.602	1.241	1.641	957	2.108	1.518	2.086	1.103	1.683
2021		<b>1.543</b>	1.444	1.653	1.126	2.763	1.494	1.071	1.138	1.401	831	2.324	2.701	1.314	1.758	1.043	2.157	1.571	2.159	1.111	1.748
2022		<b>1.724</b>	1.570	1.891	1.304	2.956	1.591	1.237	1.323	1.610	1.027	2.556	2.797	1.613	2.023	1.399	2.348	1.741	2.310	1.321	1.949
<b>Unsko-sanski</b>																					
2018		<b>1.286</b>	1.239	998	976	2.550	1.328	670	805	1.217	720	1.819	1.875	1.836	1.308	1.145	1.969	1.396	1.775	867	958
2019		<b>1.338</b>	1.358	998	1.072	2.574	1.382	712	874	1.229	784	1.785	2.165	1.990	1.408	1.088	2.025	1.425	1.873	879	1.055
2020		<b>1.379</b>	1.420	1.052	1.109	2.554	1.410	753	908	1.188	763	1.835	2.152	2.081	1.437	1.013	2.049	1.443	1.902	834	1.133
2021		<b>1.429</b>	1.314	1.087	1.224	2.646	1.478	772	961	1.232	776	1.823	2.244	1.989	1.555	986	2.121	1.462	1.916	843	1.430
2022		<b>1.570</b>	1.490	1.311	1.373	2.831	1.608	939	1.130	1.295	930	1.982	2.350	1.489	1.623	1.179	2.293	1.554	2.093	1.080	1.514
<b>Posavski</b>																					
2018		<b>1.180</b>	549	-	801	2.705	1.221	891	779	1.037	670	1.758	1.870	-	1.060	1.422	1.742	1.351	1.737	608	-
2019		<b>1.236</b>	536	646	876	2.698	1.288	983	814	955	650	2.002	2.012	-	1.105	2.007	1.766	1.367	1.697	583	-
2020		<b>1.297</b>	-	638	951	2.701	1.337	978	922	1.076	642	2.234	2.026	-	1.123	2.282	1.820	1.413	1.790	572	-
2021		<b>1.378</b>	-	643	1.066	2.738	1.431	854	967	1.131	619	2.201	2.083	-	1.262	1.604	1.889	1.532	1.775	569	-
2022		<b>1.580</b>	-	825	1.407	2.848	1.572	969	1.125	1.206	-	2.497	2.684	-	1.728	1.839	2.071	1.715	1.990	828	-
<b>Tuzlanski</b>																					
2018		<b>1.215</b>	1.098	1.500	913	2.507	1.331	758	824	1.054	825	1.735	1.934	867	1.483	859	1.803	1.275	1.836	999	1.328
2019		<b>1.260</b>	1.201	1.501	979	2.651	1.402	876	902	1.048	770	1.807	2.085	1.127	1.566	882	1.913	1.218	1.957	1.206	1.416
2020		<b>1.322</b>	1.263	1.615	1.017	2.616	1.427	877	948	1.068	795	1.908	2.074	1.190	1.429	917	1.987	1.270	2.145	1.260	1.425
2021		<b>1.381</b>	1.364	1.612	1.082	2.650	1.452	942	1.011	1.064	769	2.196	2.135	1.329	1.674	1.032	2.030	1.298	2.230	1.268	1.599
2022		<b>1.558</b>	1.411	1.853	1.269	2.822	1.537	1.152	1.193	1.176	1.026	2.618	2.243	1.405	1.755	1.357	2.275	1.481	2.310	1.406	1.654
<b>Zeničko-dobojski</b>																					
2018		<b>1.164</b>	1.200	1.656	892	2.381	1.229	784	844	1.036	667	1.891	1.747	988	1.263	954	1.747	1.167	1.856	859	970
2019		<b>1.210</b>	1.232	1.661	949	2.545	1.265	869	881	940	661	1.776	1.904	1.488	1.311	786	1.862	1.243	1.975	1.148	1.054
2020		<b>1.251</b>	1.288	1.653	983	2.500	1.308	914	904	965	672	1.787	1.948	1.519	1.327	816	1.983	1.248	2.058	932	1.159
2021		<b>1.316</b>	1.364	1.723	1.048	2.526	1.376	915	949	997	693	1.665	1.986	1.420	1.375	840	1.994	1.401	2.178	872	1.256
2022		<b>1.475</b>	1.496	1.981	1.221	2.705	1.460	1.094	1.118	1.136	900	2.263	2.205	1.505	1.548	1.079	2.156	1.524	2.266	1.187	1.402
<b>Bosansko-podrinjski</b>																					
2018		<b>1.220</b>	1.426	-	1.098	2.457	931	947	795	1.082	608	2.004	1.945	-	-	1.163	1.649	1.244	1.681	952	1.290
2019		<b>1.245</b>	1.370	-	1.094	2.518	973	974	851	1.085	631	2.036	2.650	-	-	1.328	1.725	1.350	1.742	965	1.346
2020		<b>1.318</b>	1.463	-	1.190	2.440	992	996	915	1.057	689	2.017	2.257	-	-	1.337	1.759	1.379	1.787	956	1.306
2021		<b>1.371</b>	1.509	-	1.283	2.562	981	1.021	861	1.104	711	2.027	2.322	-	-	1.308	1.764	1.391	1.846	931	1.303
2022		<b>1.589</b>	1.862	-	1.543	2.754	1.077	1.091	1.023	1.292	893	2.268	2.565	-	-	1.465	1.998	1.527	1.957	1.090	1.309
<b>Srednjobosanski</b>																					
2018		<b>1.091</b>	1.419	1.464	815	2.453	1.174	715	904	1.042	726	1.582	1.761	668	1.191	1.273	1.751	1.157	1.699	627	897
2019		<b>1.146</b>	1.538	1.602	868	2.372	1.200	754	951	1.102	718	1.411	2.192	735	1.132	1.150	1.860	1.262	1.769	651	917
2020		<b>1.178</b>	1.325	1.719	888	2.323	1.232	806	979	1.106	680	1.406	2.275	766	1.122	1.094	1.937	1.305	1.793	651	1.026
2021		<b>1.227</b>	1.437	1.716	967	2.363	1.304	868	1.041	1.136	788	1.364	2.457	777	1.379	748	1.956	1.338	1.870	671	1.038
2022		<b>1.366</b>	1.529	1.861	1.106	2.558	1.415	1.033	1.155	1.218	980	1.584	2.422	964	2.084	926	2.124	1.482	2.016	893	1.138
<b>Hercegovačko-neretvanski</b>																					
2018		<b>1.495</b>	1.057	660	1.334	2.787	1.464	778	941	1.821	902	2.288	2.351	1.198	1.064	1.000	1.925	1.372	1.703	743	1.552
2019		<b>1.561</b>	1.079	680	1.292	2.815	1.487	812	997	1.895	946	2.383	2.530	999	1.076	1.039	2.019	1.422	1.952	828	1.657
2020		<b>1.589</b>	1.072	678	1.135	2.824	1.501	843	996	1.914	867	2.292	2.712	988	995	1.012	2.081	1.498	2.028	905	1.573
2021		<b>1.689</b>	1.164	680	1.238	2.967	1.552	966	1.071	1.995	904	2.405	2.914	1.067	1.051	1.035	2.179	1.543	2.119	1.175	1.592
2022		<b>1.863</b>	1.277	869	1.495	3.143	1.614	1.137	1.235	2.354	1.064	2.467	2.811	1.254	1.541	1.433	2.333	1.708	2.248	1.305	1.856

**4. PREGLED PO KANTONIMA I OPĆINAMA**  
 REVIEW BY CANTONS AND MUNICIPALITIES

**4.4. BRUTO PLAĆE PO KANTONIMA I PODRUČJIMA KD BIH 2010 - nastavak**  
 GROSS WAGES BY CANTONS AND BY SECTIONS KD BIH 2010 - continued

KM

Godina Year	Kanton/Canton	Ukupno Total	Područja/Sections																		
			A	B	C	D	E	F	G	H	I	J	K	L	M	N	O	P	Q	R	S
Zapadnohercegovački																					
2018		<b>1.216</b>	737	1.327	1.320	2.663	1.400	966	960	982	659	2.368	1.909	1.052	1.700	1.668	1.738	1.329	1.704	650	687
2019		<b>1.319</b>	709	1.409	1.387	2.492	1.452	1.099	1.046	1.031	645	2.411	2.830	1.288	1.768	1.346	1.803	1.361	1.830	728	746
2020		<b>1.340</b>	721	1.412	1.391	2.478	1.535	1.215	1.024	1.039	670	2.427	2.673	1.402	1.829	1.532	1.866	1.402	1.890	723	746
2021		<b>1.393</b>	956	1.403	1.545	2.493	1.618	1.430	1.070	1.063	740	2.457	2.228	1.424	1.701	1.456	1.876	1.435	1.869	707	809
2022		<b>1.550</b>	868	1.742	1.654	2.594	1.725	1.473	1.250	1.209	857	2.525	2.231	1.370	1.849	1.684	2.081	1.633	1.947	914	967
Kanton Sarajevo																					
2018		<b>1.702</b>	1.424	1.383	1.182	2.535	1.483	1.148	1.299	1.578	857	2.089	2.623	1.388	1.856	866	2.232	1.713	2.067	1.538	2.019
2019		<b>1.794</b>	1.452	1.295	1.237	2.628	1.506	1.202	1.384	1.617	893	2.198	2.728	1.380	1.878	899	2.305	1.959	2.239	1.730	2.096
2020		<b>1.836</b>	1.473	1.286	1.285	2.684	1.512	1.266	1.433	1.565	833	2.284	2.713	1.284	1.851	936	2.340	2.003	2.308	1.704	2.111
2021		<b>1.962</b>	1.620	2.565	1.399	3.024	1.639	1.462	1.513	1.688	944	2.439	2.825	1.399	2.039	1.075	2.384	2.052	2.367	1.807	2.199
2022		<b>2.179</b>	1.908	2.418	1.548	3.217	1.760	1.643	1.759	1.933	1.121	2.641	2.938	1.863	2.322	1.473	2.587	2.277	2.620	1.815	2.399
Kanton 10																					
2018		<b>1.350</b>	1.623	1.127	761	2.601	1.377	1.346	796	842	650	2.211	1.581	-	1.070	1.797	1.732	1.407	1.744	573	-
2019		<b>1.361</b>	1.579	603	756	2.689	1.373	1.349	869	819	689	2.207	1.664	-	904	1.501	1.770	1.397	1.840	571	-
2020		<b>1.423</b>	1.743	-	762	2.704	1.376	1.411	839	839	690	2.256	1.926	-	623	1.540	1.841	1.486	1.863	552	-
2021		<b>1.451</b>	1.745	-	808	2.713	1.415	1.498	920	887	730	2.304	1.931	696	1.151	1.404	1.894	1.518	1.934	577	1.067
2022		<b>1.615</b>	1.843	2.036	1.005	2.835	1.421	1.691	1.108	1.076	945	2.342	2.171	-	1.355	1.567	2.047	1.742	2.041	829	1.720

#### 4. PREGLED PO KANTONIMA I OPĆINAMA

REVIEW BY CANTONS AND MUNICIPALITIES

#### 4.5. NETO PLAĆE U FEDERACIJI BIH PO OPĆINAMA NET WAGES IN FEDERATION OF BIH BY MUNICIPALITIES

Općine/Municipalities	2018	2019	2020	2021	2022
<b>Federacija BiH/Federation of BiH</b>	<b>889</b>	<b>928</b>	<b>956</b>	<b>996</b>	<b>1.114</b>
<b>Unsko-sanski kanton</b>	<b>840</b>	<b>872</b>	<b>897</b>	<b>933</b>	<b>1.021</b>
Grad Bihać	966	1.014	1.043	1.091	1.195
Bosanska Krupa	825	865	883	902	982
Bosanski Petrovac	757	783	853	880	924
Bužim	702	750	766	785	867
Grad Cazin	719	753	767	789	876
Ključ	790	756	779	806	904
Sanski Most	794	789	808	849	958
Velika Kladuša	765	766	800	828	906
<b>Kanton Posavski</b>	<b>773</b>	<b>808</b>	<b>847</b>	<b>897</b>	<b>1.025</b>
Domaljevac-Šamac	579	616	610	641	725
Odžak	650	678	726	795	978
Orašje	893	924	960	996	1.101
<b>Tuzlanski kanton</b>	<b>797</b>	<b>824</b>	<b>863</b>	<b>906</b>	<b>1.022</b>
Banovići	916	911	979	1.017	1.157
Čelić	675	655	688	776	873
Doboj Istok	560	571	591	630	745
Grad Gračanica	615	631	649	689	815
Grad Gradačac	653	692	719	767	885
Kalesija	680	701	735	765	866
Kladanj	713	733	738	775	856
Lukavac	792	802	846	868	995
Sapna	860	914	973	1.017	1.116
Grad Srebrenik	684	715	726	752	883
Teočak	807	852	892	950	1.075
Grad Tuzla	923	965	1.016	1.074	1.179
Grad Živinice	781	777	791	811	928
<b>Zeničko-dobojski kanton</b>	<b>763</b>	<b>793</b>	<b>820</b>	<b>858</b>	<b>962</b>
Breza	944	961	970	955	1.071
Doboj Jug	681	683	717	705	789
Kakanj	1.005	1.025	1.087	1.110	1.216
Maglaj	687	711	739	795	891
Olovo	592	693	720	772	816
Tešanj	610	634	652	707	802
Usora	795	766	776	843	954
Vareš	784	828	858	866	1.146
Grad Visoko	620	646	663	700	797
Zavidovići	696	726	751	812	894
Grad Zenica	868	908	935	967	1.084
Žepče	639	658	677	720	810
<b>Bosansko-podrinjski kanton</b>	<b>796</b>	<b>810</b>	<b>856</b>	<b>891</b>	<b>1.026</b>
Foča	856	937	989	1.021	1.095
Grad Goražde	795	806	853	888	1.024
Pale	721	823	856	876	1.022



**4. PREGLED PO KANTONIMA I OPĆINAMA**  
*REVIEW BY CANTONS AND MUNICIPALITIES*

**4.5. NETO PLACE U FEDERACIJI BIH PO OPĆINAMA - nastavak**  
*NET WAGES IN FEDERATION OF BIH BY MUNICIPALITIES - continued*

<b>Općine/Municipalities</b>	<b>2018</b>	<b>2019</b>	<b>2020</b>	<b>2021</b>	<b>2022</b>
<b>Srednjobosanski kanton</b>	<b>723</b>	<b>759</b>	<b>774</b>	<b>799</b>	<b>893</b>
Bugojno	641	640	679	700	765
Busovača	755	772	799	800	885
Dobretići	1.091	1.045	1.052	1.046	1.184
Donji Vakuf	727	804	770	815	904
Fojnica	791	790	774	808	896
Gornji Vakuf - Uskoplje	684	673	691	731	841
Jajce	906	928	954	967	1.072
Kiseljak	684	710	729	763	875
Kreševo	867	877	923	930	1.060
Novi Travnik	768	786	805	855	974
Travnik	707	770	792	812	893
Vitez	668	717	714	723	819
<b>Hercegovačko-neretvanski kanton</b>	<b>970</b>	<b>1.011</b>	<b>1.029</b>	<b>1.080</b>	<b>1.198</b>
Grad Čapljina	840	838	877	912	986
Čitluk	656	675	691	731	852
Jablanica	951	970	1.006	1.039	1.168
Konjic	824	887	892	950	1.051
Grad Mostar	1.070	1.112	1.131	1.185	1.309
Neum	853	885	856	865	983
Prozor	896	947	985	1.022	1.137
Ravno	1.192	1.158	1.190	1.065	1.060
Stolac	809	823	851	839	944
<b>Zapadnohercegovački kanton</b>	<b>796</b>	<b>861</b>	<b>873</b>	<b>892</b>	<b>1.002</b>
Grude	937	1.022	1.019	1.041	1.124
Grad Ljubuški	844	925	909	907	1.029
Posušje	705	759	790	808	910
Grad Široki Brijeg	749	799	822	854	974
<b>Kanton Sarajevo</b>	<b>1.096</b>	<b>1.153</b>	<b>1.179</b>	<b>1.251</b>	<b>1.390</b>
Centar Sarajevo	1.274	1.365	1.381	1.456	1.590
Hadžići	878	908	952	1.031	1.133
Ilidža	914	960	962	1.038	1.182
Ilijaš	682	703	730	760	868
Novi Grad Sarajevo	969	996	1.012	1.069	1.231
Novo Sarajevo	1.224	1.290	1.324	1.397	1.520
Stari Grad Sarajevo	1.050	1.143	1.215	1.309	1.479
Trnovo	949	1.010	1.018	1.088	1.205
Vogošća	823	822	880	959	1.101
<b>Kanton 10</b>	<b>884</b>	<b>890</b>	<b>929</b>	<b>942</b>	<b>1.047</b>
Bosansko Grahovo	1.083	1.163	1.198	922	1.074
Drvar	757	677	694	728	847
Glamoč	840	671	700	728	890
Kupres	987	1.019	1.104	1.106	1.175
Grad Livno	954	953	997	1.022	1.135
Tomislavgrad	789	806	820	834	941

#### 4. PREGLED PO KANTONIMA I OPĆINAMA

REVIEW BY CANTONS AND MUNICIPALITIES

#### 4.6. BRUTO PLAĆE U FEDERACIJI BIH PO OPĆINAMA GROSS WAGES IN FEDERATION OF BIH BY MUNICIPALITIES

Općine/Municipalities	2018	2019	2020	2021	2022
<b>Federacija BiH/Federation of BiH</b>	<b>1.365</b>	<b>1.427</b>	<b>1.472</b>	<b>1.543</b>	<b>1.724</b>
<b>Unsko-sanski kanton</b>	<b>1.286</b>	<b>1.338</b>	<b>1.379</b>	<b>1.429</b>	<b>1.570</b>
Grad Bihać	1.489	1.566	1.613	1.678	1.844
Bosanska Krupa	1.261	1.324	1.355	1.387	1.512
Bosanski Petrovac	1.154	1.195	1.304	1.343	1.418
Bužim	1.054	1.138	1.164	1.193	1.317
Grad Cazin	1.093	1.147	1.169	1.202	1.337
Ključ	1.205	1.154	1.191	1.233	1.392
Sanski Most	1.213	1.208	1.239	1.307	1.476
Velika Kladuša	1.162	1.166	1.221	1.255	1.392
<b>Kanton Posavski</b>	<b>1.180</b>	<b>1.236</b>	<b>1.297</b>	<b>1.378</b>	<b>1.580</b>
Domaljevac-Šamac	872	930	924	974	1.106
Odžak	984	1.032	1.109	1.207	1.502
Orašje	1.370	1.417	1.476	1.541	1.704
<b>Tuzlanski kanton</b>	<b>1.215</b>	<b>1.260</b>	<b>1.322</b>	<b>1.381</b>	<b>1.558</b>
Banovići	1.392	1.386	1.496	1.496	1.707
Čelić	1.026	994	1.042	1.179	1.344
Doboj Istok	841	858	890	949	1.134
Grad Gračanica	923	949	978	1.045	1.229
Grad Gradačac	977	1.040	1.082	1.155	1.346
Kalesija	1.028	1.062	1.110	1.165	1.322
Kladanj	1.073	1.104	1.113	1.202	1.326
Lukavac	1.210	1.228	1.298	1.314	1.510
Sapna	1.303	1.391	1.485	1.554	1.703
Grad Srebrenik	1.035	1.085	1.103	1.165	1.350
Teočak	1.222	1.297	1.364	1.453	1.653
Grad Tuzla	1.423	1.490	1.572	1.648	1.813
Grad Živinice	1.187	1.185	1.208	1.241	1.414
<b>Zeničko-dobojski kanton</b>	<b>1.164</b>	<b>1.210</b>	<b>1.251</b>	<b>1.316</b>	<b>1.475</b>
Breza	1.448	1.475	1.488	1.465	1.656
Doboj Jug	1.030	1.030	1.084	1.087	1.218
Kakanj	1.555	1.589	1.678	1.745	1.873
Maglaj	1.035	1.073	1.117	1.211	1.352
Olovo	894	1.003	1.049	1.130	1.196
Tešanj	923	962	991	1.081	1.223
Usora	1.204	1.155	1.185	1.287	1.470
Vareš	1.195	1.268	1.313	1.320	1.760
Grad Visoko	937	978	990	1.046	1.209
Zavidovići	1.056	1.106	1.143	1.228	1.343
Grad Zenica	1.330	1.395	1.438	1.495	1.680
Žepče	956	988	1.021	1.097	1.226
<b>Bosansko-podrinjski kanton</b>	<b>1.220</b>	<b>1.245</b>	<b>1.318</b>	<b>1.371</b>	<b>1.589</b>
Foča	1.306	1.437	1.520	1.568	1.691
Grad Goražde	1.220	1.240	1.313	1.366	1.587
Pale	1.090	1.250	1.306	1.337	1.568

**4. PREGLED PO KANTONIMA I OPĆINAMA**  
*REVIEW BY CANTONS AND MUNICIPALITIES*

**4.6. BRUTO PLACE U FEDERACIJI BIH PO OPCINAMA - nastavak**  
*GROSS WAGES IN FEDERATION OF BIH BY MUNICIPALITIES - continued*

<i>Općine/Municipalities</i>	2018	2019	2020	2021	2022
<b>Srednjobosanski kanton</b>	<b>1.091</b>	<b>1.146</b>	<b>1.178</b>	<b>1.227</b>	<b>1.366</b>
Bugojno	972	978	1.035	1.062	1.150
Busovača	1.149	1.177	1.221	1.225	1.360
Dobretići	1.682	1.614	1.625	1.666	1.886
Donji Vakuf	1.107	1.216	1.158	1.228	1.376
Fojnica	1.204	1.207	1.180	1.229	1.368
Gornji Vakuf - Uskoplje	1.028	1.009	1.027	1.094	1.262
Jajce	1.384	1.417	1.457	1.518	1.687
Kiseljak	1.037	1.076	1.108	1.162	1.337
Kreševo	1.332	1.348	1.420	1.449	1.633
Novi Travnik	1.176	1.208	1.237	1.311	1.498
Travnik	1.050	1.159	1.204	1.240	1.355
Vitez	1.007	1.058	1.084	1.139	1.269
<b>Hercegovačko-neretvanski kanton</b>	<b>1.495</b>	<b>1.561</b>	<b>1.589</b>	<b>1.689</b>	<b>1.863</b>
Grad Čapljina	1.283	1.280	1.342	1.402	1.522
Čitluk	995	1.027	1.048	1.121	1.310
Jablanica	1.459	1.491	1.548	1.609	1.812
Konjic	1.261	1.362	1.371	1.464	1.613
Grad Mostar	1.658	1.724	1.755	1.869	2.045
Neum	1.307	1.360	1.313	1.332	1.518
Prozor	1.358	1.437	1.503	1.556	1.732
Ravno	1.837	1.793	1.842	1.661	1.648
Stolac	1.228	1.254	1.303	1.287	1.458
<b>Zapadnohercegovački kanton</b>	<b>1.216</b>	<b>1.319</b>	<b>1.340</b>	<b>1.393</b>	<b>1.550</b>
Grude	1.437	1.574	1.570	1.604	1.736
Grad Ljubuški	1.288	1.418	1.396	1.393	1.592
Posušje	1.070	1.156	1.205	1.241	1.398
Grad Široki Brijeg	1.147	1.222	1.261	1.366	1.510
<b>Kanton Sarajevo</b>	<b>1.702</b>	<b>1.794</b>	<b>1.836</b>	<b>1.962</b>	<b>2.179</b>
Centar Sarajevo	1.988	2.132	2.160	2.285	2.498
Hadžići	1.353	1.405	1.468	1.605	1.776
Ilidža	1.410	1.483	1.486	1.609	1.840
Ilijaš	1.037	1.070	1.109	1.194	1.325
Novi Grad Sarajevo	1.501	1.542	1.567	1.667	1.917
Novo Sarajevo	1.908	2.012	2.069	2.217	2.422
Stari Grad Sarajevo	1.626	1.780	1.897	2.081	2.317
Trnovo	1.456	1.558	1.577	1.684	1.872
Vogošća	1.264	1.261	1.353	1.471	1.669
<b>Kanton 10</b>	<b>1.350</b>	<b>1.361</b>	<b>1.423</b>	<b>1.451</b>	<b>1.615</b>
Bosansko Grahovo	1.662	1.789	1.848	1.415	1.657
Drvar	1.154	1.029	1.057	1.129	1.291
Glamoč	1.278	1.013	1.058	1.114	1.372
Kupres	1.514	1.563	1.699	1.713	1.832
Grad Livno	1.461	1.459	1.531	1.567	1.742
Tomislavgrad	1.199	1.228	1.250	1.287	1.456

