

**BROJNO STANJE STOKE I STOČNA PROIZVODNJA U 2022 GODINI**  
**NUMBER OF LIVESTOCKS AND LIVESTOCK PRODUCTION IN 2022**

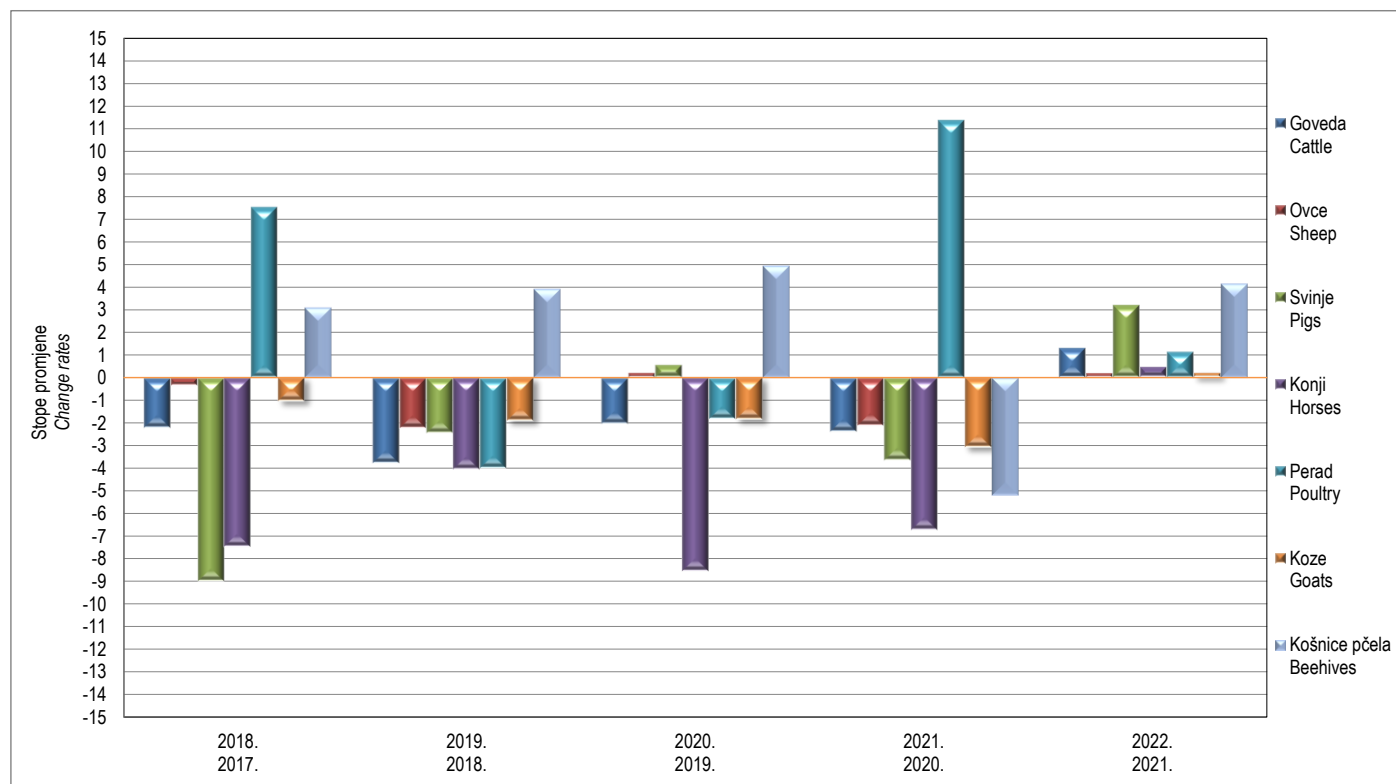
Prema prikupljenim i obrađenim podacima brojnog stanja stoke i peradi u 2022. i njihovim poređenjem sa rezultatima za 2021. porast brojnog stanja se bilježi kod goveda za 1,3%, ovaca za 0,2%, svinja za 3,2%, konja za 0,5%, peradi za 1,2%, koza za 0,2% i košnica pčela za 4,1%. U odnosu na prethodnu godinu, smanjenje brojnog stanja je zabilježeno kod kunića za 6,3%.

U okviru stočne proizvodnje, u odnosu na prethodnu godinu zabilježen je porast proizvodnje kozijeg mlijeka za 4,7%, proizvodnje neprane vune za 5,1% i proizvodnje meda za 89,1%. U odnosu na prethodnu godinu, zabilježen je pad proizvodnje kravljeg mlijeka za 2,9%, ovčijeg mlijeka za 0,9% i jaja za 3,9%.

According to the collected and processed data of the number of livestock and poultry in 2022 and their comparison with the results for 2021, an increase was recorded in the number of cattle by 1.3%, sheep by 0.2%, pigs by 3.2%, horse by 0.5%, poultry by 1.2%, goats by 0.2% and beehives by 4.1%. Compared to the previous year a decrease was recorded in the number of rabbits by 6.3%.

Within livestock production, compared to the previous year, an increase was recorded in production of goat's milk by 4.7%, wool production by 5.1% and production of honey by 89.1%. Compared to the previous year a decrease was recorded in production of cow's milk by 2.9%, ewe's milk by 0.9% and eggs by 3.9%.

**Grafikon 1. Godišnje stope promjena izračunate iz indeksa brojnog stanja stoke i peradi**  
**Graph 1. Yearly change rates calculated from indices of number of livestock and poultry**



**BROJNO STANJE STOKE I PERADI**  
**NUMBER OF LIVESTOCKS AND POULTRY**

	2021	2022	<u>31.XII.2022</u> <u>31.XII.2021</u>	
<b>GOVEDA</b>	190.719	193.256	<b>101,3</b>	<b>CATTLE</b>
Krave i steone junice	131.848	131.274	<b>99,6</b>	<i>Cows and heifers</i>
<b>OVCE</b>	497.590	498.648	<b>100,2</b>	<b>SHEEP</b>
Ovce za priplod	384.098	380.518	<b>99,1</b>	<i>Breeding sheep</i>
<b>SVINJE</b>	78.647	81.188	<b>103,2</b>	<b>PIGS</b>
Krmače i suprasne nazimice	7.366	8.164	<b>110,8</b>	<i>Sows and mated sows</i>
<b>KONJI</b>	4.004	4.023	<b>100,5</b>	<b>HORSES</b>
Kobile i ždrjebne omice	1.193	1.331	<b>111,6</b>	<i>Mares and fillies in foal</i>
<b>PERAD, hilj./tis grla</b>	12.107	12.249	<b>101,2</b>	<b>POULTRY, thous.</b>
Koke nosilice, hilj./tis grla	1.790	1.745	<b>97,5</b>	<i>Hens</i>
<b>KOZE</b>	41.190	41.275	<b>100,2</b>	<b>GOATS</b>
<b>KUNIĆI</b>	4.604	4.313	<b>93,7</b>	<b>RABBITS</b>
<b>KOŠNICE PČELA</b>	240.906	250.899	<b>104,1</b>	<b>BEEHIVES</b>

**STOČNA PROIZVODNJA**  
**LIVESTOCK PRODUCTION**

	2021	2022	<u>2022</u> <u>2021</u>	
<b>Broj muženih krava</b>	104.776	100.592	<b>96,0</b>	<i>Number of dairy cows</i>
<b>Kravlje mlijeko, hilj. litara</b>	313.064	304.024	<b>97,1</b>	<i>Cows's milk (thousands of liters)</i>
<b>Po muženoj kravi (litara)</b>	2.988	3.022	<b>101,2</b>	<i>Liters, per milking cow</i>
<b>Broj muženih ovaca</b>	217.568	207.873	<b>95,5</b>	<i>Number of dairy sheep</i>
<b>Ovčije mlijeko (hilj. litara)</b>	11.290	11.193	<b>99,1</b>	<i>Ewe's milk (thousands of liters)</i>
<b>Po muženoj ovci (litara)</b>	52	54	<b>103,8</b>	<i>Liters, per milking sheep</i>
<b>Broj muženih koza</b>	23.764	24.341	<b>102,4</b>	<i>Number of dairy goats</i>
<b>Kozje mlijeko (hilj. litara)</b>	4.500	4.713	<b>104,7</b>	<i>Goat's milk (thousands of liters)</i>
<b>Po muženoj kozi (litara)</b>	189	194	<b>102,2</b>	<i>Liters, per milking goat</i>
<b>Broj striženih ovaca</b>	398.362	413.501	<b>103,8</b>	<i>Number cut sheep</i>
<b>Vuna neprana (tona)</b>	706	742	<b>105,1</b>	<i>Wool raw (tons)</i>
<b>Po ovci (kilogramima)</b>	1,8	1,8	<b>101,3</b>	<i>Kilograms, per sheep</i>
<b>Broj kokoši nosilica, hilj./tis</b>	1.804	1.727	<b>95,7</b>	<i>Number of laying hens, thous.</i>
<b>Jaja (hilj. komada)</b>	312.108	300.042	<b>96,1</b>	<i>Eggs (thousands pieces)</i>
<b>Po kokoši (komada)</b>	173	174	<b>100,4</b>	<i>Eggs, per laying hen</i>
<b>Med (tona)</b>	1.348	2.549	<b>189,1</b>	<i>Honey (tons)</i>
<b>Po košnici (kilograma)</b>	5,6	10,2	<b>181,5</b>	<i>Kilograms, per beehive</i>

## **BROJNO STANJE STOKE I STOČNA POIZVODNJA**

### **Obuhvat i izvještajne jedinice:**

Jedinice posmatranja za istraživanje PO-51-2 su poljoprivredna gazdinstva/gospodarstva, a izvještajne jedinice su općinske službe za poljoprivredu koji rade metodom procjene za nivo općine-ukupno.

Jedinice posmatranja i izvještajne jedinice za istraživanje PO-51-2a su pravne osobe i dijelovi pravnih osoba registrovani u Područje A, Oblast 01, Grana 01.1, Razredi 01.41-01.49 i Razred 01.50. Podaci se prikupljaju putem godišnjih statističkih izvještaja iz poslovne evidencije koju subjekti vode.

Statističko istraživanje „Procjena brojnog stanja stoike i stočne proizvodnje, (PO-51-2) i „Godišnji izvještaj o stočarstvu za pravne osobe“ (PO-51-2a) se provodi na temelju Zakona o statistici (Službene novine FBiH, br. 63/03 i 9/09).

Opširnija metodološka objašnjenja za ovo istraživanje objavljena su na internet stranici Federalnog zavoda za statistiku <https://fzs.ba/index.php/klasifikacije-i-metodologije/english-metodologije/poljoprivreda-i-ribarstvo/>

Podaci o brojnom stanju stoke i peradi odnose se na 31.12.2022. godine, a stočna proizvodnja za 2022. godinu.

Ovi podaci se koriste za praćenje ukupnog broja stoke i peradi, stočne proizvodnje, obračun bruto domaće proizvodnje (BDP), kao i za izračunavanje indeksa fizičkog obima poljoprivredne proizvodnje i ekonomskih računa u poljoprivredi.

## **NUMBER OF LIVESTOCKS AND LIVESTOCK PRODUCTION**

### **Covering and report units:**

Observation units for survey PO-51-2 are agricultural households, and reporting units are municipal services for agriculture who work by estimation method for the level of municipality-total.

Observation and reporting unit for survey PO-51-2a are legal entities and parts of legal entities registered in Area A, Area 01, Branch 01.1, Classes 01.41-01.49 and Class 01.50. Data are collected through the annual statistical reports from business records of legal entities.

Statistical survey “Estimation of number of livestock and poultry and livestock production” (PO-51-2) and “Annual survey on livestock for legal entities” PO-51-2a is performed on the basis of the Law on Statistics (Official Gazette of FB&H No. 63/03 and 9/09).

More detailed notes on the Methodology of this survey are published on the web site of the Federal Statistical Office <https://fzs.ba/index.php/klasifikacije-i-metodologije/english-metodologije/poljoprivreda-i-ribarstvo/>

Data on number of livestock and poultry referring to 31/12/2022, and livestock production for 2022 year.

This data are used to monitor the total number of livestock and poultry, livestock production, calculation of gross domestic production (GDP), as well as, to calculate the index of the physical volume of agriculture production and economic accounts for agriculture.

**Izdaje Federalni zavod za statistiku FBiH, 71000 Sarajevo, Zelenih beretki 26**  
*Published by the Institute for Statistics of FBiH, 71000 Sarajevo, Zelenih beretki 26*

**Telefon/Phone: +387 (33) 20 64 52, Fax: +387 (33) 22 61 51**  
Elektronska pošta/E-mail: [fedstat@fzs.ba](mailto:fedstat@fzs.ba), Internetska stranica/Web site: <http://www.fzs.ba>

**Odgovorne osobe:**  
**Fehrija Mehić, šef odsjeka za statistiku poljoprivrede, šumarstva, ribarstva i okoliša**  
**Doc. dr. Emir Kremić, direktor**

*Persons responsible:*  
*Fehrija Mehić, Head of Agriculture, Forestry, Fishery and Environment Statistics Department*  
*Assist. Prof. Dr. Emir Kremić, Director General*

**Saopćenje pripremio: Ismir Melez**  
*Prepared by: Ismir Melez*

**Molimo korisnike da prilikom korišćenja podataka navedu izvor**  
*Those using data from this issue are requested to state the source*

**Podaci iz ovog saopćenja objavljuju se na internetu**  
*First Release data are published on the Internet*